

EXPLANATION

Tie: from the northwest section corner of section 13, T24N, R50E, and the northeast corner of section 14, T24N, R50E due east 3450 feet and 800 feet south to the northeast, ie corner no.1, of GBL 34.

All claims are located in unsurveyed T24N, R50E and R51E.

Dashed lines represent projected section lines.  
Subdued lines represent existing GBL claims.

All claims are 600 feet wide by 1500 feet long with the location monument set 20 feet from the end line and 300 feet from either side, unless shown otherwise.

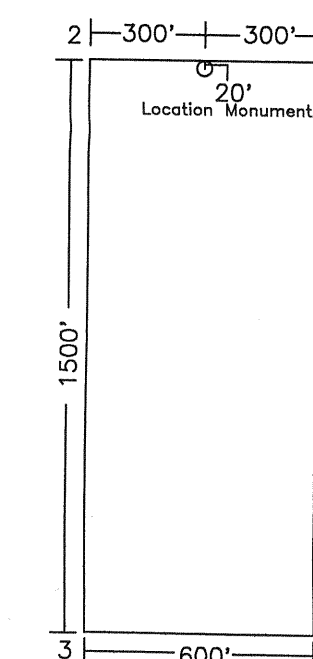
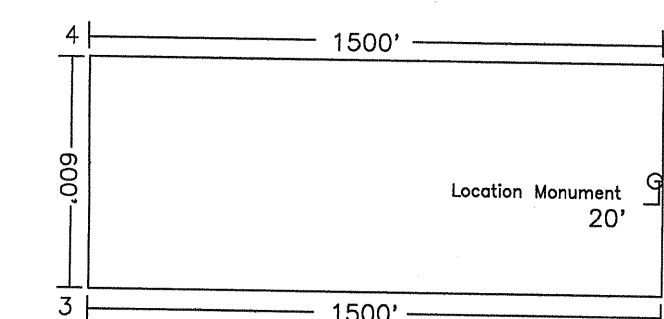
Total number of claims= 15.

Located: 9/01/94  
Monumenting completed: 10/24/94

Scale: 1"=500'

NOTE: This map is only a graphical depiction of the location of the properties and is not to be used for surveying or any other purpose that requires exactness in accuracy.

This material is furnished by Placer Dome U.S. Inc., without warranty or representation of any kind, expressed or implied, except that this material was correct to the best of its knowledge at the time the material was prepared. Placer Dome U.S. Inc. expressly disclaims liability for any factual or interpretive errors in the material.



PLACER DOME U.S. INC.			
DRAWN: CMB		WC 1-15 Claim Map	
DATE: 4/18/94		Eureka County, NV	
REVISED: CMB			
DATE: 9/08/94	ACAD FILE: GBL-CLAIMS		

FILED AT THE REQUEST OF Placer Dome  
on Nov 29 19 94 at 04 mins, past 4 P.M.  
RECORDS OF EUREKA COUNTY, NEVADA M. N. REBALEATI, Recorder  
File No. 155340 Fee \$ 225.00