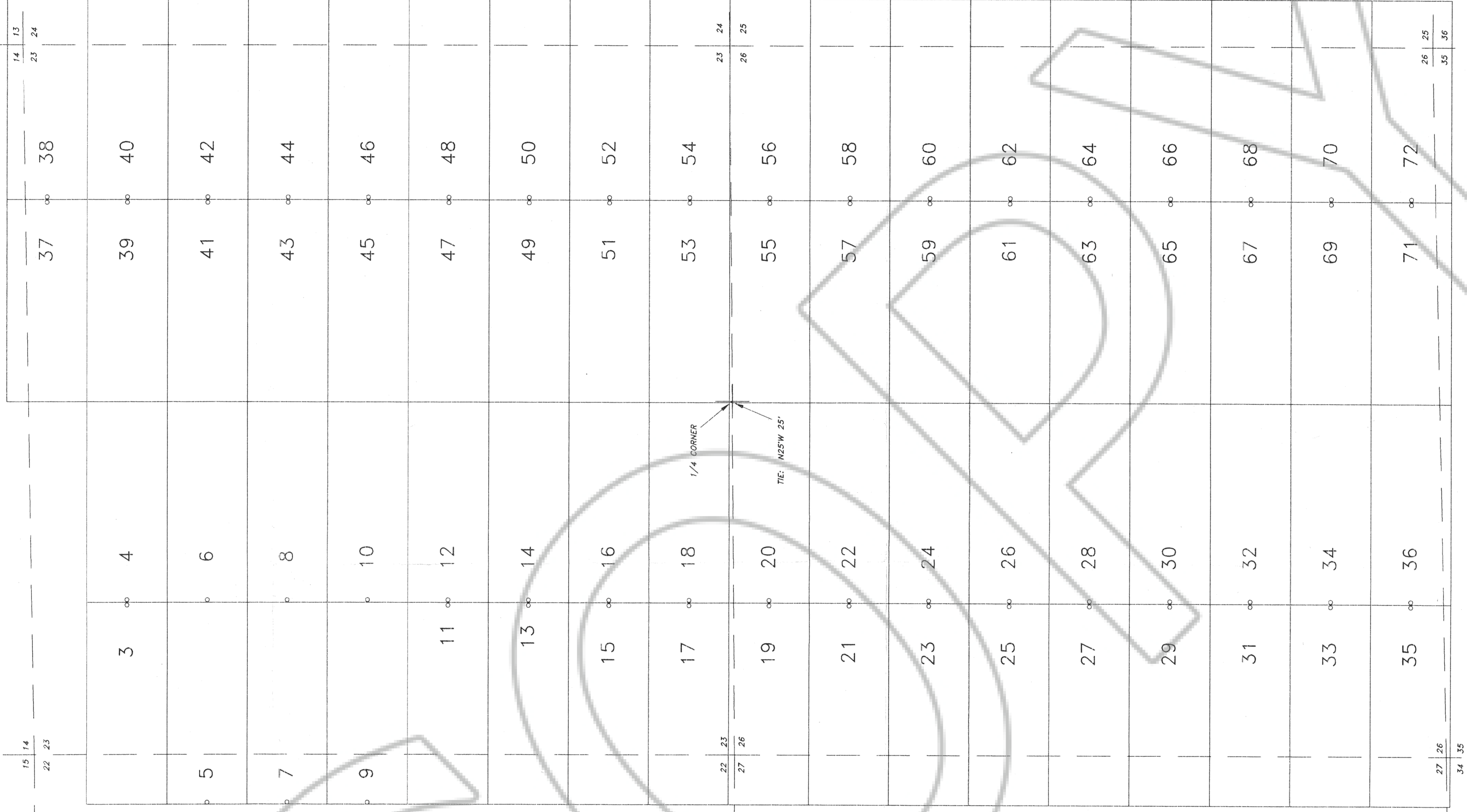


T 24 N



R 48 E

LOCATOR:

URANERZ U.S.A., INC.
5450 Riggins Court, Suite 6
Reno, Nevada 89502

NOTES:

All claims measure 1500' x 600'
All monuments are 1 1/2 x 1 1/2 x 4' wood posts
with metal tags.
All location monuments shown as "o", are set 20' into claim.

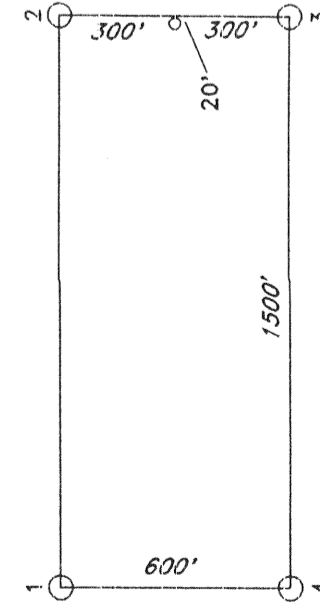
TIE:

The SE corner of KEY 18 IS N25W 25' from
the NE 1/4 corner of Section 26, T24N, R48E.

LOCATION DATES:

Sept. 9, 1994 KEY 3-6, 8, 10-36
Sept. 10, 1994 KEY 37-72
Sept. 11, 1994 KEY 7 & 9

TYPICAL CLAIM:



KEY (3-72)
LODE MINING CLAIMS

Sections 13, 14, 22-27, and 34-36
T24N R48E

Eureka County, Nevada

FILED AT THE REQUEST OF URANERZ U.S.A. INC.
ON Dec 7 1994, 11:42 AM, DIST 312 N,
RECORDS OF EUREKA COUNTY, NEVADA, M. N. REBALEATI, Recorder
File No. 156-047.

prepared by: T and T EXPLORATION SERVICES, INC.