

FILE # NO. \_\_\_\_\_  
FILED AT THE REQUEST OF \_\_\_\_\_  
DATE: \_\_\_\_\_ 1994  
AT \_\_\_\_\_ MIN. PAST \_\_\_\_\_ O'CLOCK  
FILES OF \_\_\_\_\_ COUNTY, NEVADA  
RECORDER \_\_\_\_\_  
DEPUTY \_\_\_\_\_  
FEE \_\_\_\_\_

COUNTY COMMISSION APPROVAL

At a regular meeting of the Eureka County Commission, State of Nevada, held on this 15th day of June, 1994, this map was duly approved.

15th day of June, 1994

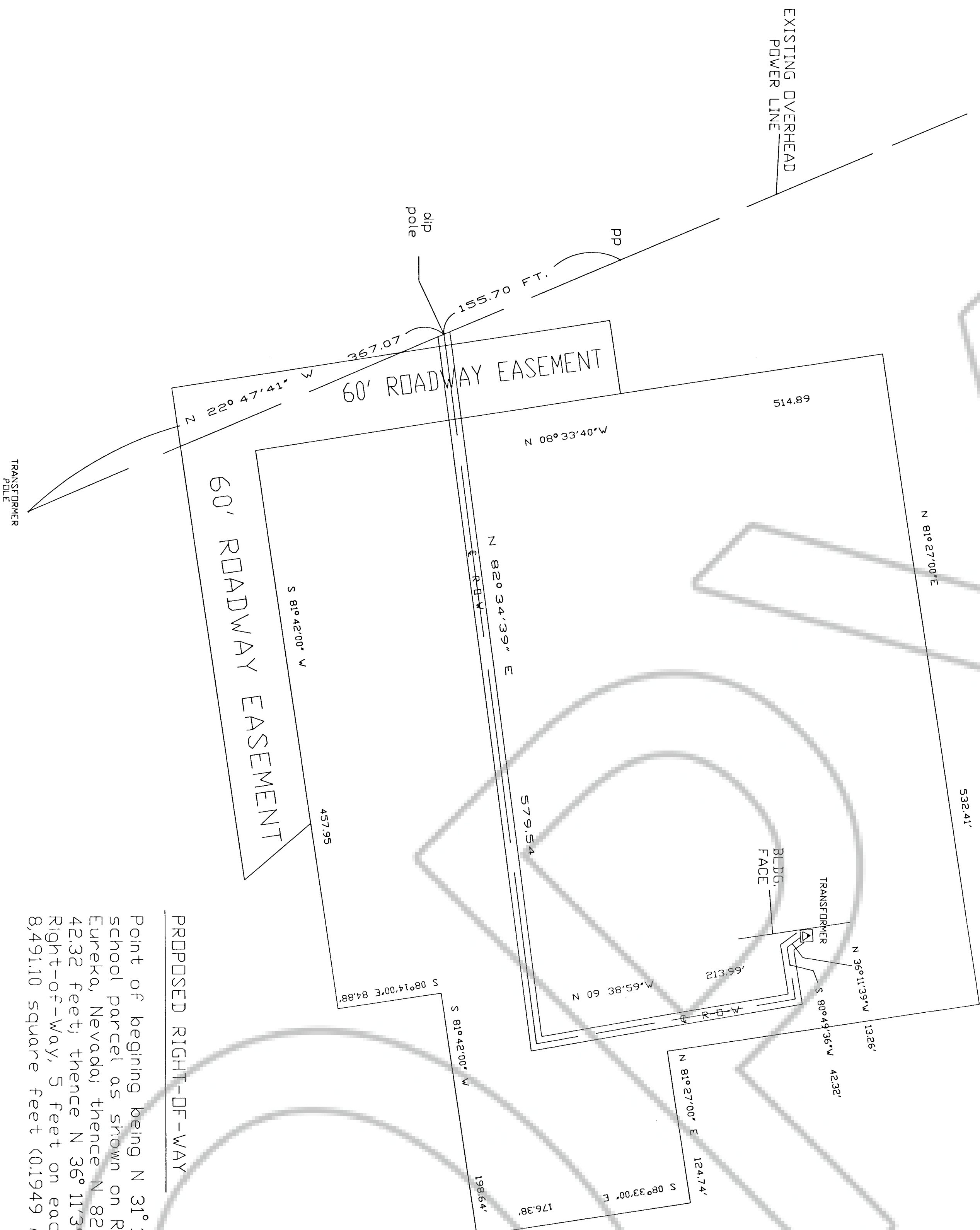
Chairman

Paul Thompson  
County Clerk

SCHOOL BOARD APPROVAL

At a regular meeting of the Eureka County School Board, held on this 15th day of June, 1994, this map was duly approved.

John F. Schuelke  
Chairman



PROPOSED RIGHT-OF-WAY

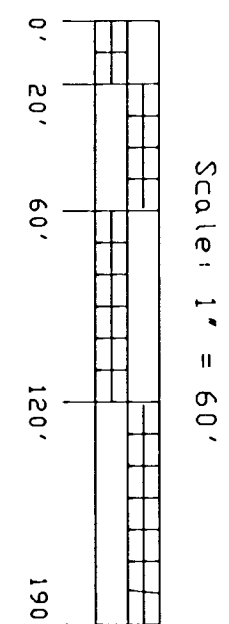
Point of beginning being N 31° 16' 03" W 179.13 feet from the Southwest corner of E.C.S.D. elementary school parcel as shown on Record of Survey, File No. 150216, Eureka County Recorders office, Eureka, Nevada; thence N 82° 34' 39" E 579.54 feet; thence N 9° 38' 59" W 213.99; thence S 80° 49' 36" W 42.32 feet; thence N 36° 11' 39" W 13.26 feet; the above described center line of a 10 foot wide Right-of-Way, 5 feet on each side of center line, being 849.11 feet in length, and containing 8,491.10 square feet (0.1949 Acres) more or less.

Dec 2 94  
156043  
My Wheeler Power, Inc.  
at 6:00 PM  
17:00

MT. WHEELER POWER, INC.  
RIGHT-OF-WAY  
FOR

ELECTRICAL DISTRIBUTION LINE  
LOCATED WITHIN NE1/4 SECTION 23 & NW1/4 SECTION 24 T19N, R53E, M.D.M.

EUREKA COUNTY, NEVADA



EUREKA  
ELEMENTARY SCHOOL