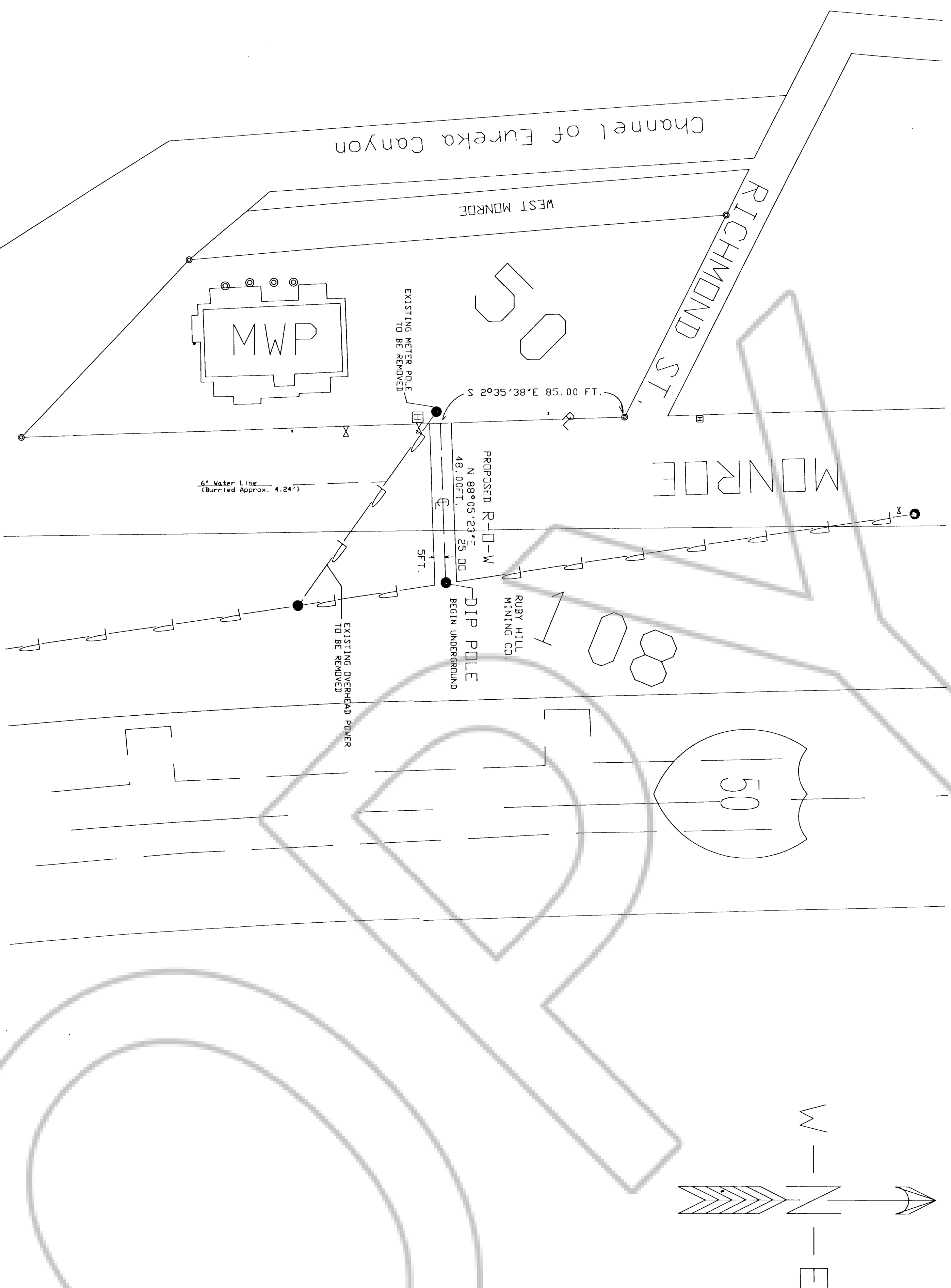


File No. 156049
Filed at the Request of
Mt Wheeler Power Inc
Date: Dec 2 1994
at 6 Min. Past 9:00 AM o'clock
Files of Eureka County, Nevada
Recorder Michael Rebaleati
Deputy Shawnee Strand
Fee 17.00



COUNTY COMMISSION APPROVAL

At a regular meeting of the Eureka County Commission, State of Nevada, held on this 6th day of June, 1994, this map was duly approved.

153 Noisaca
Chairman
Paul Chang
County Clerk

Ruby Hill Mining Company does hereby certify that we are the owners of Block 108, City of Eureka, Eureka County, Nevada, and we have reviewed this map and the Right-of-Way hereon being for an Electrical distribution line and do hereby grant, sell and convey said Right-of-Way to Mt. Wheeler Power, Inc. for the construction and maintenance of said line.

Charles J. Barker 6-21-94
Title: PRESIDENT Date

A 10 foot Right-of-Way for an underground Electrical distribution line with 5 feet on each side of the following described center line. Point of beginning being S 2°35'38" E 85.00 feet from the Northeast corner of Block 50, City of Eureka, Eureka County, Nevada; thence N 88°05'23" E 48.00 feet to the West boundary of Block 108; thence N 88°05'23" E 25.00 feet across a portion of Block 108 belonging to Ruby Hill Mining Company to the center line of an existing Power line Right-of-Way. The described center line beginning on the East boundary of Block 50 and terminating on the center line of the power line Right-of-Way within Block 108, containing 730.00 square feet(0.0168 Acres) more or less.

SCALE: 1IN.=30FT.

MT. WHEELER POWER, INC. CERTIFICATION

I, Jim Lewis, being Interim General Manager for Mt. Wheeler Power, Inc. do hereby certify that I approve this Right-of-Way application as shown hereon.

Jim J. Lewis 5/25/94
Date

MT. WHEELER POWER, INC.

ELY, NEVADA 89319

Map showing the location of a Ten foot underground Electrical Power Distribution line Easement. Located within NW1/4 Section 24, T.19 N.R.53 E. M.D. B.&M. BLOCKS 108 & 50 EUREKA COUNTY NEVADA