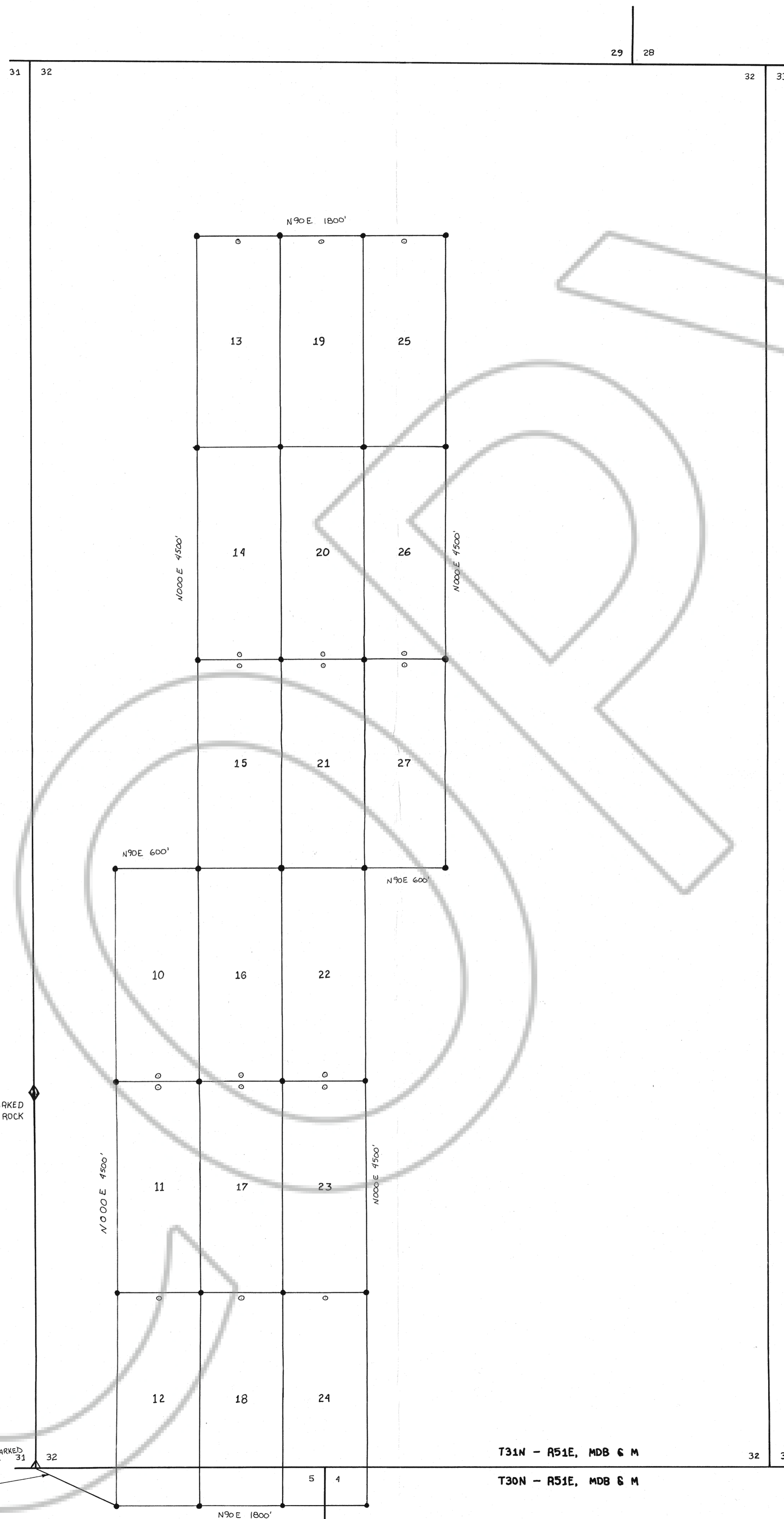


TYPICAL BREW CLAIM
SCALE: 1" = 500'
(SEE NOTE NO. 1)



OWNER AND LOCATOR

WFW RESOURCES LLC.
1691 COLLEGE PKWY B104
ELKO, NEVADA 89801

LOCATION DATES

BREW NO'S 10-27 WERE LOCATED ON OCTOBER 2, 1994

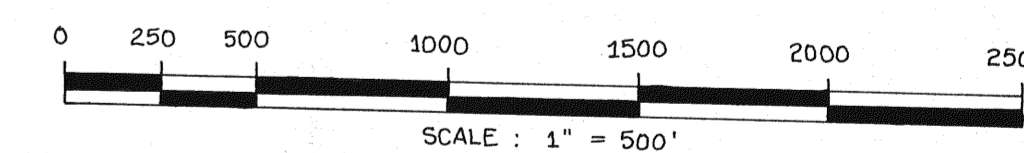
ALL CORNERS WERE ERECTED ON OCTOBER 2, 1994

LEGEND

- = 4" X 4" WOOD POST CLAIM CORNER
- = 4" X 4" WOOD POST LOCATION MONUMENT
- ◆ = FOUND 1/4 CORNER
- △ = FOUND SECTION CORNER

NOTES

- 1) THE LOCATION MONUMENT MAY LIE AT EITHER END OF THE CLAIM.



MAP OF
BREW LODE CLAIMS 10-27
for
WFW RESOURCES LLC.
SECTION 32, T31N - R51E, MDB & M
EUREKA COUNTY, NEVADA

FILED AT THE REQUEST OF WFW RESOURCES
on Dec 13, 1994, at 10 mins, past 12 P.M.
RECORDS OF EUREKA COUNTY, NEVADA M. N. REBALEATI, Recorder
File No. 156161 Fee \$ 270.00

T31N - R51E, MDB & M
T30N - R51E, MDB & M