

BF28	BF27	BF2	BF1	BF134	BF133
BF30	BF29	BF4	BF3	BF136	BF135
BF32	BF31	BF6	BF5	BF138	BF137
BF34	BF33	BF8	BF7	BF140	BF139
BF36	BF35	BF10	BF9	BF142	BF141
BF38	BF37	BF12	BF11	BF144	BF143
BF40	BF39	BF14	BF13	BF146	BF145
BF42	BF41	BF16	BF15	BF148	BF147
BF44	BF43	BF18	BF17	BF150	BF149
BF46	BF45	BF20	BF19	BF152	BF151
BF48	BF47	BF22	BF21	BF154	BF153
BF50	BF49	BF24	BF23	BF156	BF155
BF52	BF51	BF25	BF165	BF158	BF157
BF54	BF53	BF26	BF166	BF160	BF159
BF56	BF55	BF168	BF167	BF162	BF161
BF58	BF57	BF170	BF169	BF164	BF163
BF59					
BF60					
BF61					
BF62					
BF63					
BF65					
BF67					
BF69					
BF71					
BF73					
BF75					
BF77					
BF79					
BF81					
BF83					
BF85					
BF87					
BF89					
BF91					
BF93					

EDGE MATCH TO MAP 2 OF 2

T20N  
T21N

R51E  
R52E

EXPLANATION

Tie: from the southwest corner of section 19, T20N, R52E MDM, due east 2700 feet and due north 7700 feet to the northeast corner, ie corner #1, of BF #132.

All claims are located in unsurveyed T20N and T21N, R51E and R52E MDM.

Dashed lines represent projected section lines.

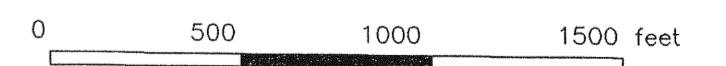
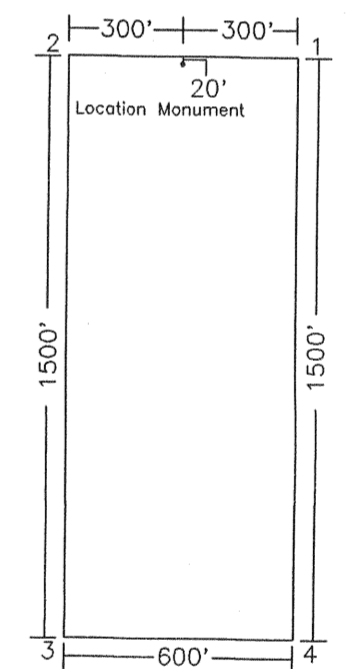
All claims are 600 feet wide by 1500 feet long with the location monument set 20 feet from the end line and 300 feet from either side, unless otherwise noted.

Total number of claims= 170.

BF 1-132 located: 10/09/94.  
BF 133-156 located: 10/21/94.  
BF 157-164 located: 12/06/94.  
BF 165-170 located: 12/07/94.  
BF 1-156 posting completed: 12/06/94.  
BF 157-170 posting completed: 12/07/94.  
Scale: 1"=500'

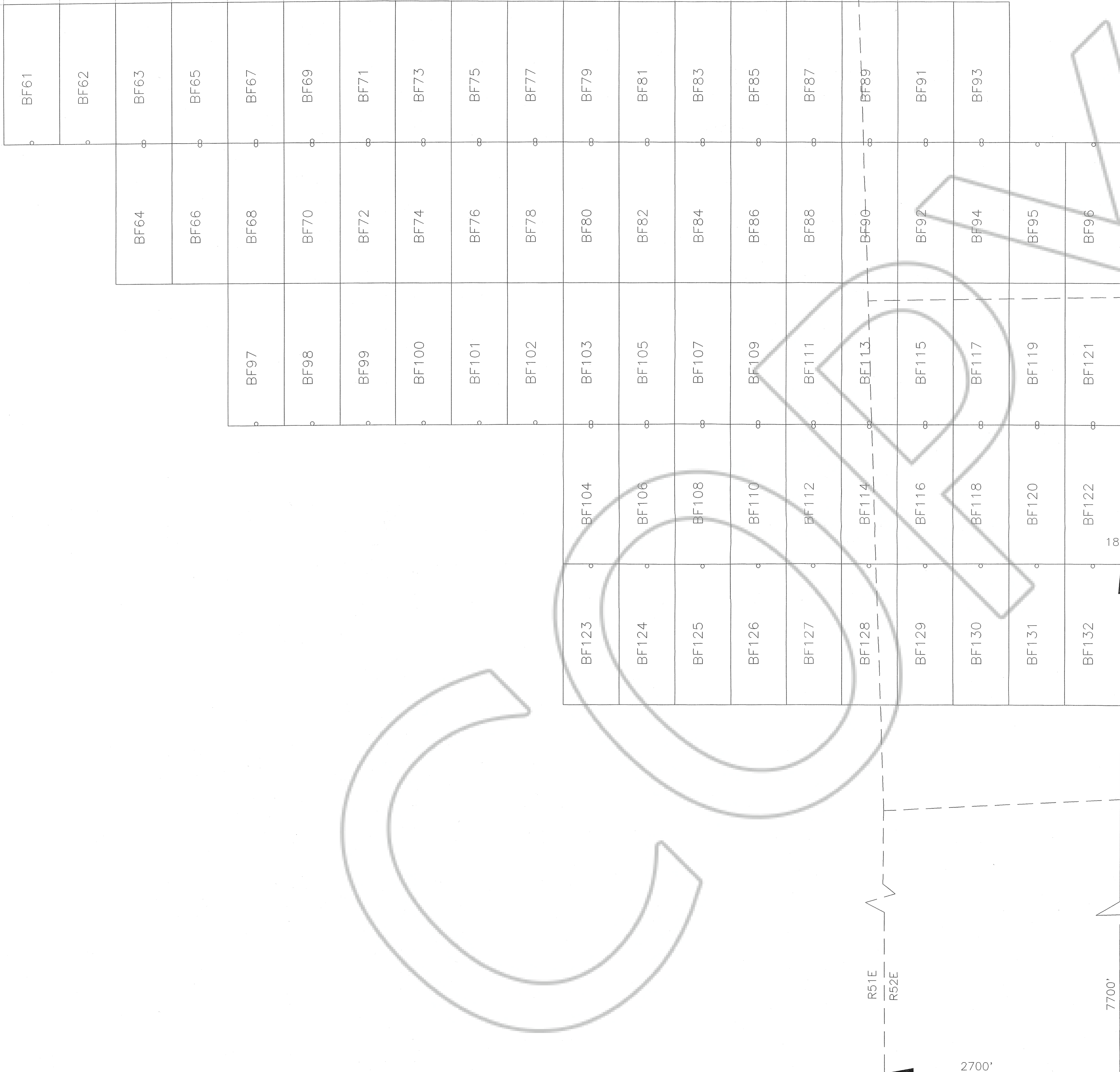
NOTE: This map is only a graphical depiction of the location of the properties and is not to be used for surveying or any other purpose that requires exactness in accuracy.

This material is furnished by Placer Dome U.S. Inc., without warranty or representation of any kind, expressed or implied, except that this material was correct to the best of its knowledge at the time the material was prepared. Placer Dome U.S. Inc. expressly disclaims liability for any factual or interpretive errors in the material.



DRAWN: CMB		BF Claim Map	
DATE: 12/28/94		BF 1-60 and BF 133-170	
REVISED:		Eureka County, NV	
DATE:		ACAD FILE: BF_NORTH.DWG MAP 1 OF 2	

FILED BY THE REQUEST OF *Placer Dome USA, Inc*  
 January 4 1995 at 2:29 pm, 3:30 P.M.  
 RECORDS OF EUREKA COUNTY, NEVADA M. N. REALE ATL. Recorder  
 File No. *156464* Fee \$ *2550.00*  
*page 1 of 2*



EXPLANATION

Tie: from the southwest corner of section 19, T20N, R52E MDM, due east 2700 feet and due north 7700 feet to the northeast corner, ie corner #1, of BF #132.

All claims are located in unsurveyed T20N and T21N, R51E and R52E MDM.

Dashed lines represent projected section lines.

All claims are 600 feet wide by 1500 feet long with the location monument set 20 feet from the end line and 300 feet from either side, unless otherwise noted.

Total number of claims= 156.

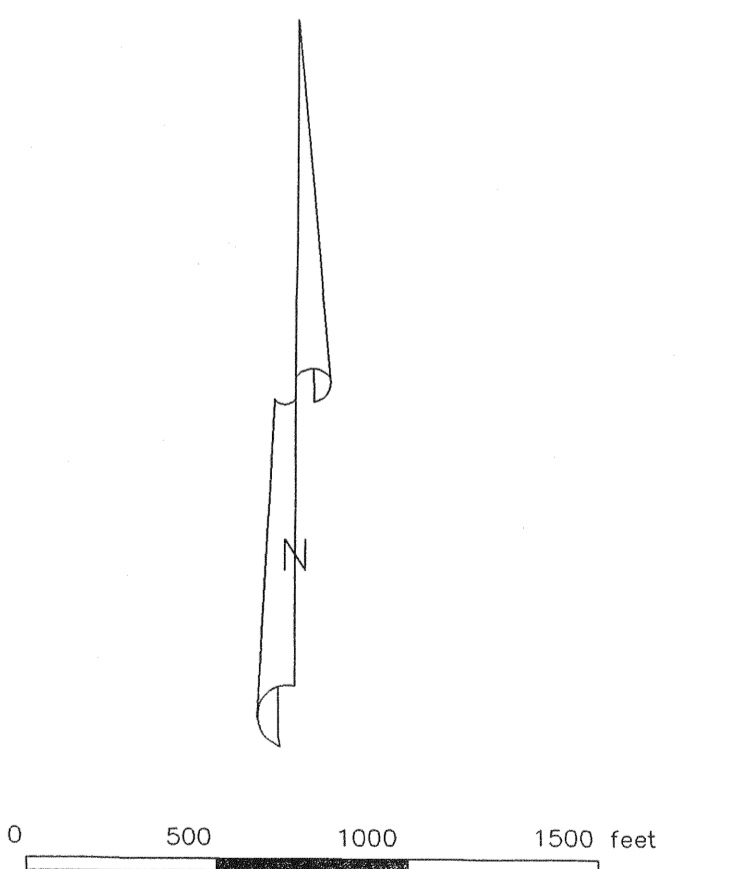
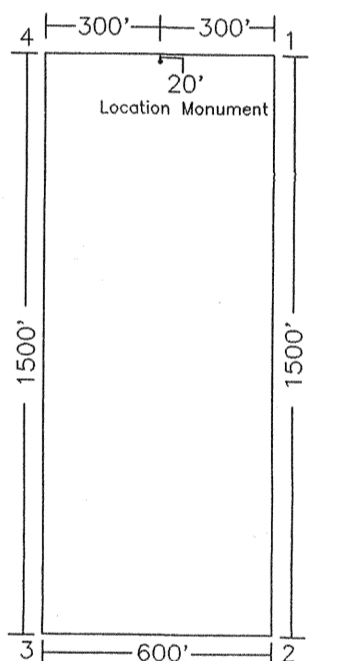
BF 1-132 located: 10/09/94.  
BF 133-156 located: 10/21/94.  
BF 157-164 located: 12/06/94.  
BF 165-170 located: 12/07/94.

BF 1-156 posting completed: 12/06/94.  
BF 157-170 posting completed: 12/07/94.

Scale: 1"=500'

NOTE: This map is only a graphical depiction of the location of the properties and is not to be used for surveying or any other purpose that requires exactness in accuracy.

This material is furnished by Placer Dome U.S. Inc., without warranty or representation of any kind, expressed or implied, except that this material was correct to the best of its knowledge at the time the material was prepared. Placer Dome U.S. Inc. expressly disclaims liability for any factual or interpretive errors in the material.



DRAWN: CMB		BF Claim Map	
DATE: 12/28/94		BF 61-132	
REVISED:		Eureka County, NV	
DATE:		ACAD FILE: BF_SOUTH.DWG	MAP 2 OF 2

FILED AT THE REQUEST OF *Placer Dome U.S. Inc.*  
 ON *January 4 1995* at *2:29* PM BY *3 P.H.*  
 RECORDS OF EUREKA COUNTY, NEVADA M.N. REBECCAH RECORDER  
 File No. *156464* Fee \$ *2550.00*  
*page 2 of 2*