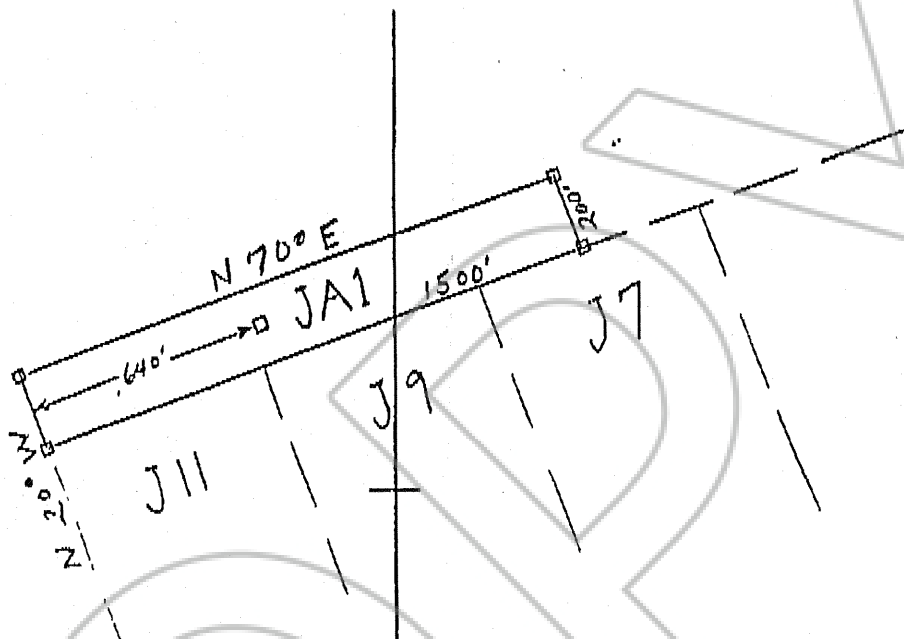




LOCATION MAP
for
JA1 Unpatented Lode Mining Claim

Section
3



Section
2

LOCATOR:
WINDFALL VENTURE
P.O. Box 2183
Grand Junction, CO 81502
By: Pathfinder Exploration Corporation

LOCATION:
Unsurveyed T17N, R53E, M.D.M.
Section 2: NW¼, Section 3: NE¼
Eureka County, Nevada

LOCATION DATE:
October 12, 1994

TIE:
The SW corner of the JA1 mining claim is
S 80°W 8,800 feet, thence S 70°W 3,000 feet
from the NW corner of Section 6, T17N, R54E.

All corners and location monuments are 2'x2"x4½' wooden posts. □

SCALE:
1 inch = 500 feet

Prepared by Denis R. Anderson 1/2/95