

156808

LOCATOR:

Santa Fe Pacific Gold Corporation
250 S. Rock Blvd, Suite 100
Reno, NV 89502

LOCATION:

Sections 4, 8, T31N, R48E

LOCATION DATE:

November 18, 1994 HAWK 1-68

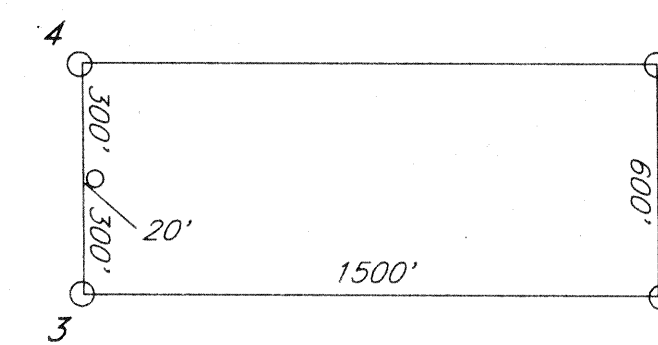
TIE POINT:

The SE corner of HAWK #17 is 360' East and 100' South
of the SE corner of Section 4, T31N, R48E.

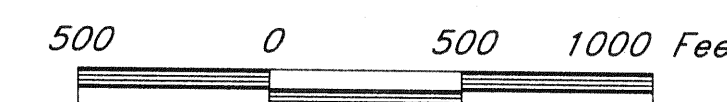
NOTES:

All claims are 1500' x 600'.
All monuments are 2"x2"x4' wood posts, with
location monuments 20' in from end center.

TYPICAL CLAIM:



Magnetic Declination 16.5° East



HAWK
LODE MINING CLAIMS 1-68

Section 4, 8 T31N, R48E

Eureka County, Nevada

November 29, 1994

Map 1 of 1

FILED AT THE REQUEST OF SANTA FE PACIFIC GOLD CORPORATION
on Jan 10 1995 at 9:12 a.m. Dist. 2 M.
RECORDS OF EUREKA COUNTY, NEVADA M. N. REBELETTI, Recorder
File No. 156808 Fee \$120.00

T 32 N
T 31 N

R 48 E
6000' E-W

