

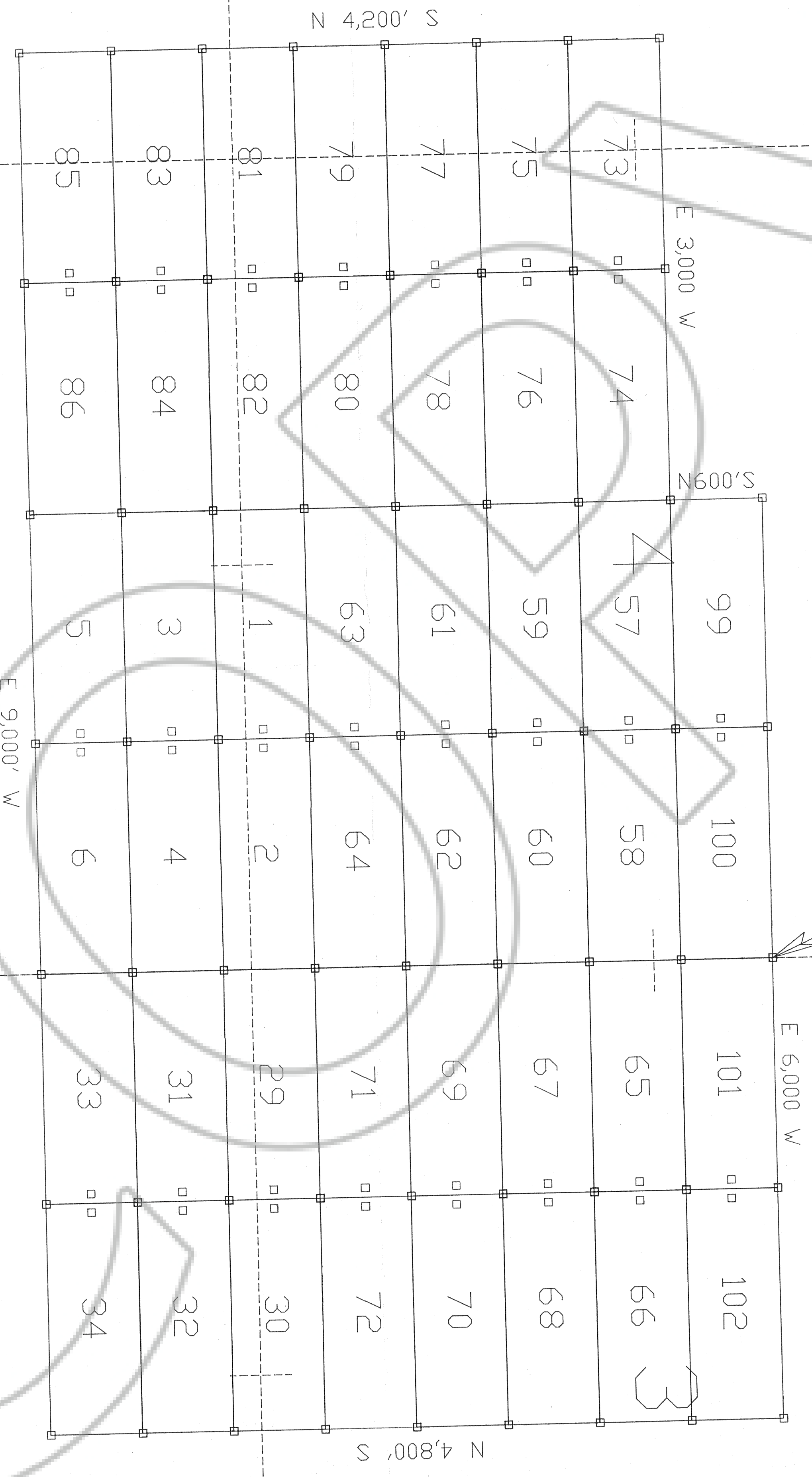
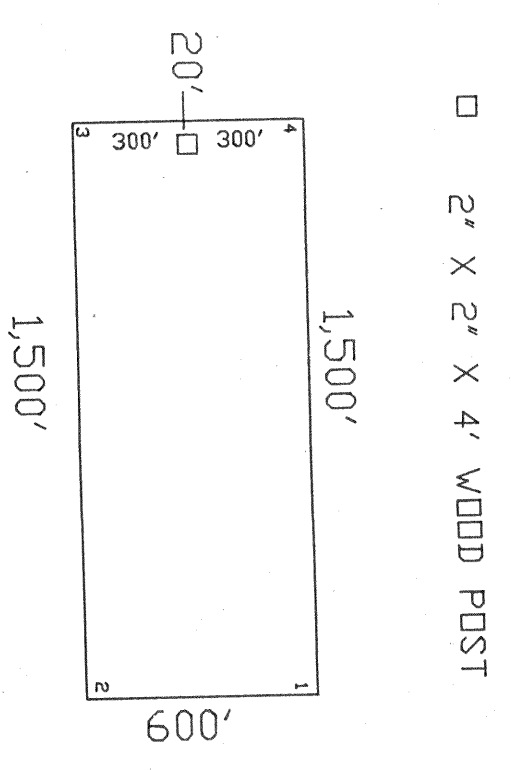
**LOCATOR:**  
 PATFINDER EXPLORATION CORPORATION  
 255 Glendale Ave Suite 26  
 Sparks, NV 89431

**LOCATION:**  
 T26N, R49E, M.D.M.  
 SECTIONS 3, 4, 5, 8, 9, 10 (UNSURVEYED)

**LOCATION DATES:**  
 BE 1-6, 57-64, 73-86 November 12, 1994  
 BE 29-34, 65-72 November 13, 1994  
 BE 99-102 November 17, 1994

ALL CORNERS AND LOCATION MONUMENTS  
 ARE 2' X 2' X 4' WOOD POSTS

**BASIS OF CONTROL:**  
 The NE Corner of BE 100 is 2,450' South  
 from the NE corner of Section 4, T26N, R49E



T  
26  
N

R  
49  
E

**PATFINDER EXPLORATION CORP.**

BE 1-6, 29-34, 57-86, 99-102  
 LODGE MINING CLAIMS

0 500 1000 1500

1 inch = 500 feet Down by D. R. Anderson - 2/95

FILED AT THE REQUEST OF *Patfinder Exploration*  
 on *Nov 7* 19*95* at *32* mins, past *12* M.  
 RECORDS OF EUREKA COUNTY, NEVADA  
 Fee \$ *2570.00*  
 File No. **157144**