

27

26

25

----- Projected sections

EXPLANATION

All claims 600' x 1500'
except where noted otherwise

Discovery monuments 20' in from end centers

Corners and discovery monuments marked
with wooden posts at least 1 1/2 inches in
diameter by 4 feet in length

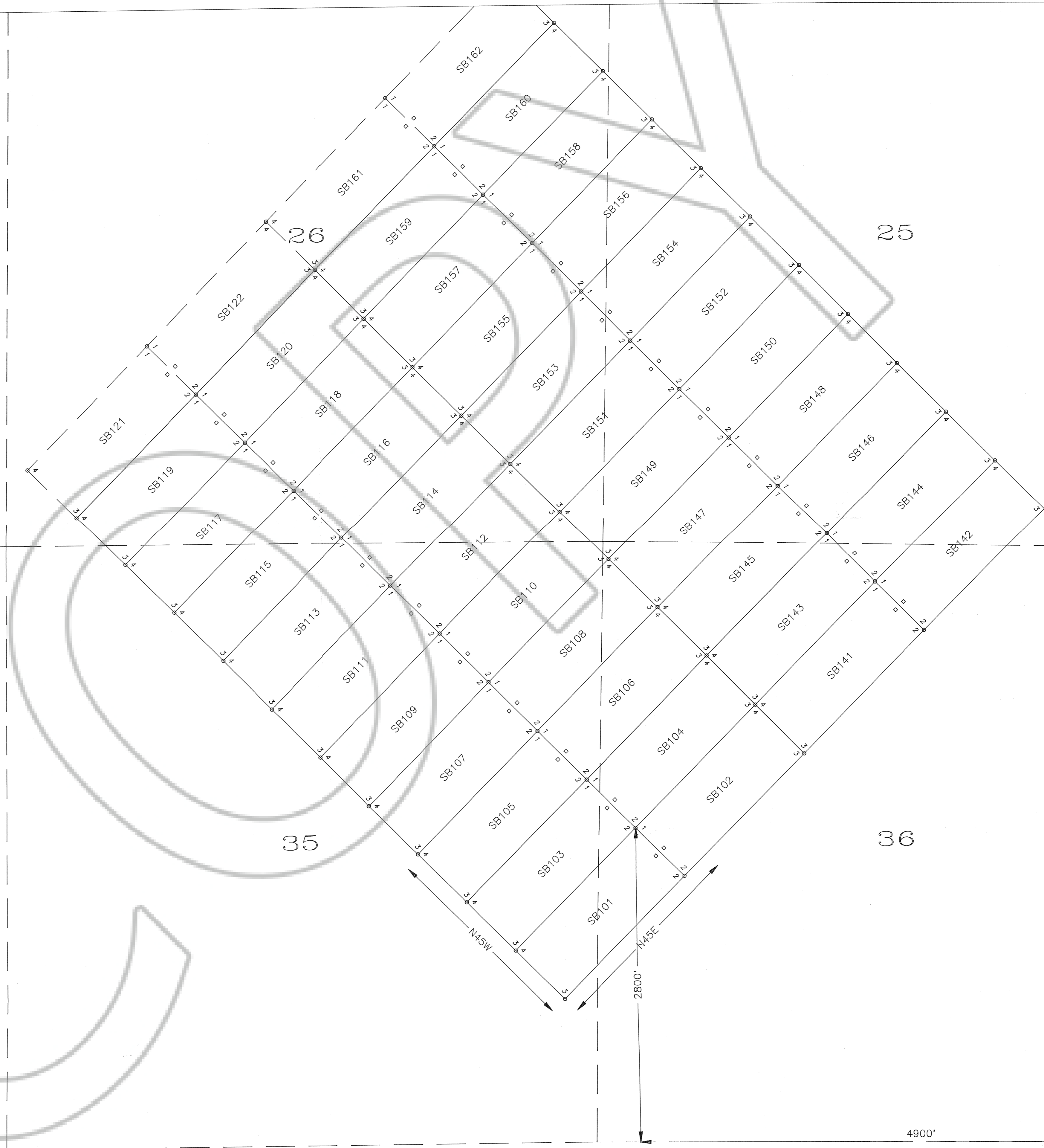
Claims located December 14, 1994

FILED AT THE REQUEST OF *BHP Minerals*
on *Nov 12 1994* at *11:22* mins, past *11 A.M.*
RECORDS OF EUREKA COUNTY, NEVADA M. N. REBALEATI, Recorder
File No. **157155** Fee \$ *2.00*

182

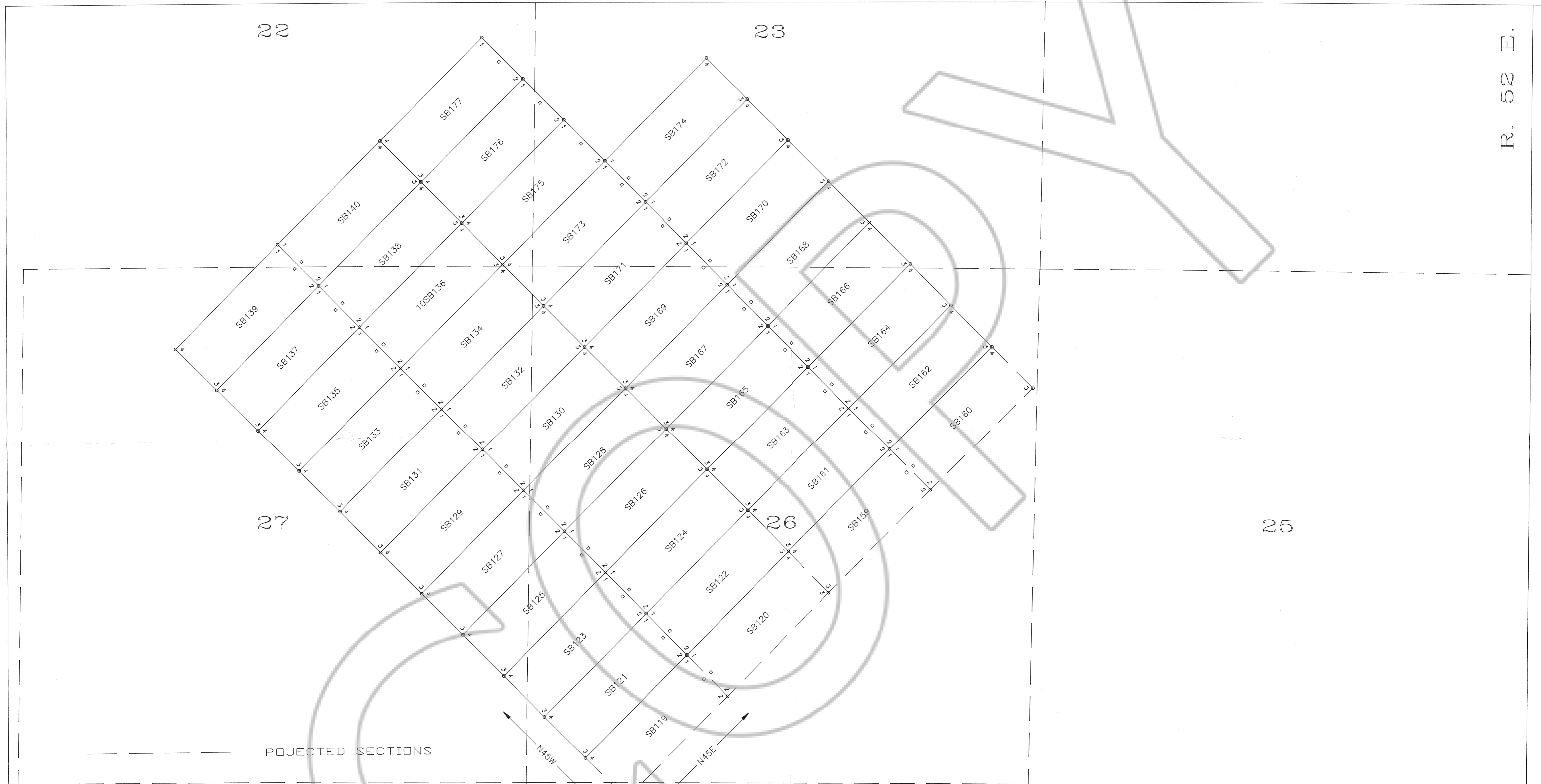


DISTRICT Eureka	BHP Minerals Inc.	
COUNTY Eureka	TITLE STEVENS BASIN CLAIMS South	
STATE Nevada	PROJECT Stevens Basin	
SHEET 1 of 2	DATA BY D. Merrick	DRAWN BY D. Laes
SCALE 1" = 500'		



T. 19 N.
T. 18 N.

R. 52 E.
R. 53 E.



R. 52 E.

FILED AT THE REQUEST OF BHP Minerals
 on Dec 10 1995 at 27 mins, past 11 A. M.
 RECORDS OF EUREKA COUNTY, NEVADA M. N. REBALEATI, Recorder
 File No. 157155 Fee \$ 2.00

DISTRICT Eureka	BHP Minerals Inc.	
COUNTY Eureka	TITLE STEVENS BASIN CLAIMS North	
STATE Nevada	PROJECT Stevens Basin	
SHEET 2 of 2		
SCALE 1" = 500'	DATA BY D. Merrick	DRAWN BY D. Laes

EXPLANATION

- All claims 600' x 1500'
except where noted otherwise
- Discovery monuments 20' in from end centers
- Corners and discovery monuments marked
with wooden posts at least 1 1/2 inches in
diameter by 4 feet in length
- Claims located December 13, 1994

T.
19
N.