

**LOCATOR:**

PATHFINDER EXPLORATION CORPORATION  
255 Glendale Ave., Suite 26  
Sparks, NV 89431

**LOCATION:**

T26N, R49E M.D.M.  
SECTIONS 3, 4, 5, 8, 9, 10 (UNSURVEYED)

**LOCATION DATES:**

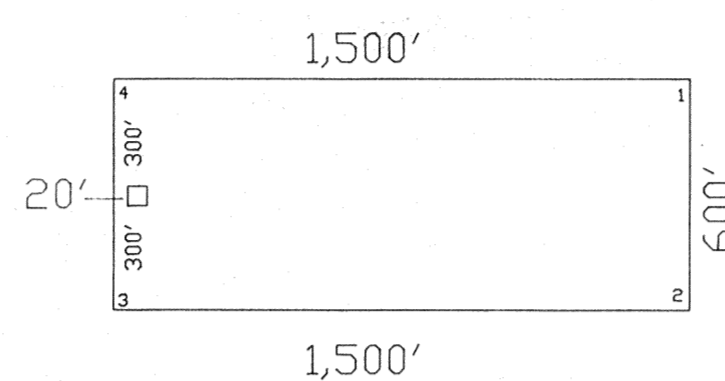
BE 1-6, 57-64, 73-86 November 12, 1994  
BE 29-34, 65-72 November 13, 1994  
BE 99-102 November 17, 1994

ALL CORNERS AND LOCATION MONUMENTS  
ARE 2" X 2" X 4" WOOD POSTS

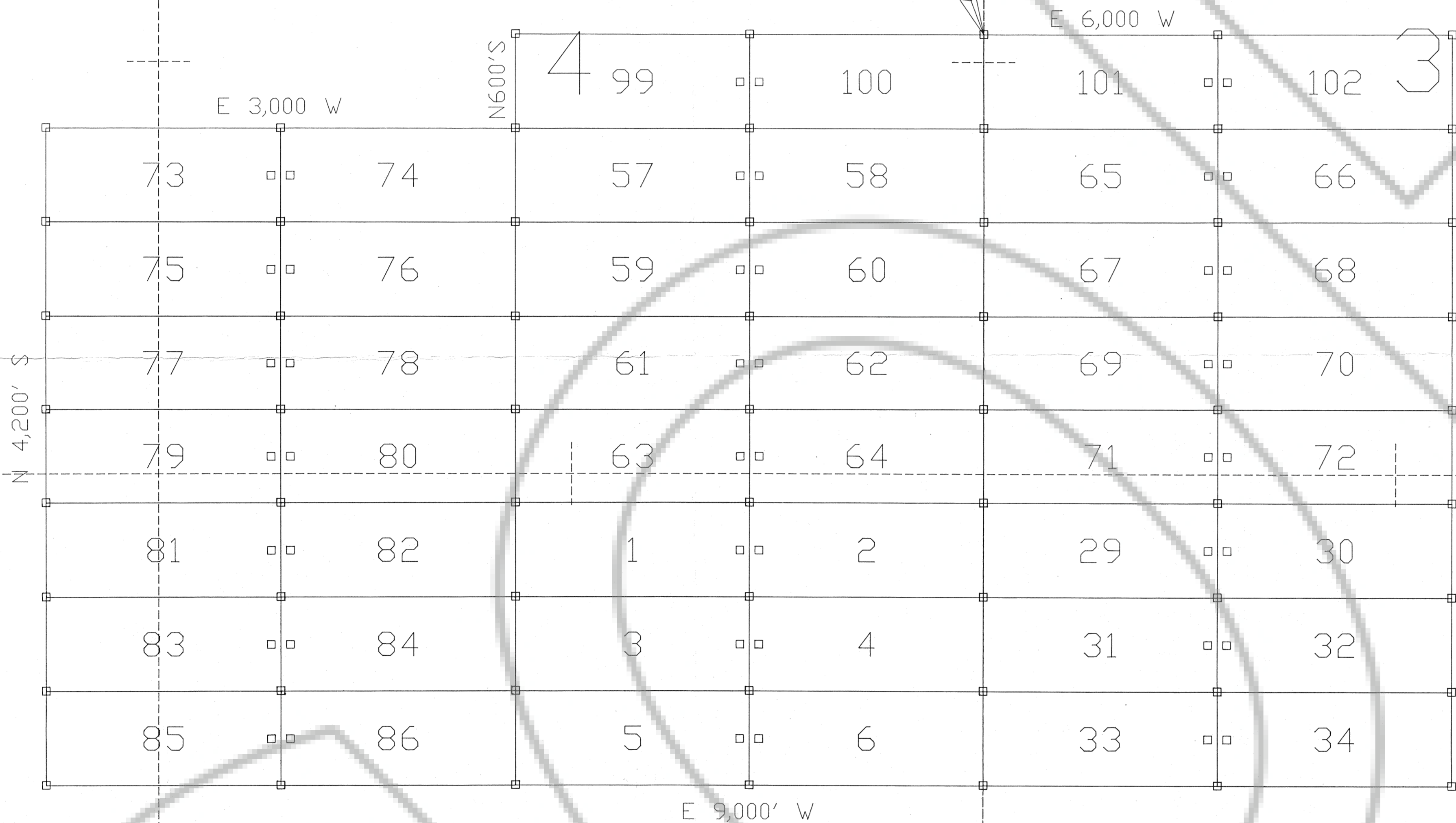
**BASIS OF CONTROL:**

The NE Corner of BE 100 is 2,450' South  
from the NE corner of Section 4, T26N, R49E

□ 2" X 2" X 4" WOOD POST



5



8

9

10

T  
26  
N

R 49 E

**PATHFINDER EXPLORATION CORP.**

BE 1-6, 29-34, 57-86, 99-102  
LODE MINING CLAIMS

0 500 1000 1500

1 inch = 500 feet Drawn by D. R. Anderson - 2/95

FILED AT THE REQUEST OF *Pathfinder Exploration*  
on *March 1, 1995* at *2:23* mins. past *11 A.M.*  
RECORDS OF EUREKA COUNTY, NEVADA. M. N. REBALEATI, Recorder  
File No. **157198** Fee \$ **2.00**