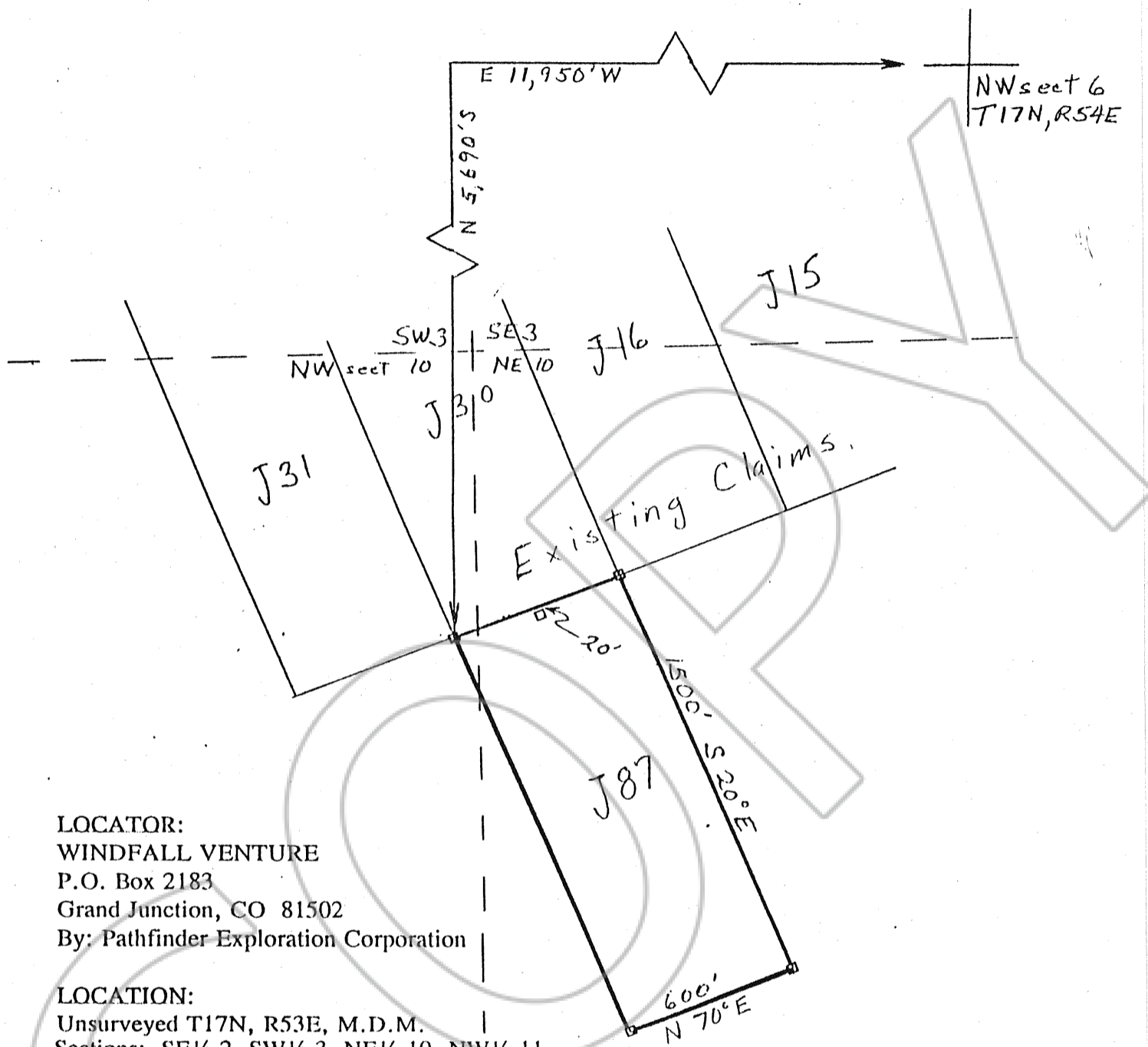


LOCATION MAP
for
J87 Unpatented Lode Mining Claim



LOCATOR:
WINDFALL VENTURE
P.O. Box 2183
Grand Junction, CO 81502
By: Pathfinder Exploration Corporation

LOCATION:
Unsurveyed T17N, R53E, M.D.M.
Sections: SE 1/4 2, SW 1/4 3, NE 1/4 10, NW 1/4 11
Eureka County, Nevada

LOCATION DATE:
January 7, 1995

TIE:
The NW corner of the J87 mining claim is approximately 5,690 feet South and 11,950 feet West from the NW corner of Section 6, T17N, R54E.

All corners and the location monument are 2'x2"x4 1/2' wooden posts.

SCALE:
1 inch = 500 feet

Prepared by Denis R. Anderson 4/4/95

FILED AT THE REQUEST OF Windfall Venture
on April 6 1995, at 34 mins, past 2 P. M.
RECORDS OF EUREKA COUNTY, NEVADA M. N. REBALEATI, Recorder
File No. _____ Fee \$ 15.00

157460