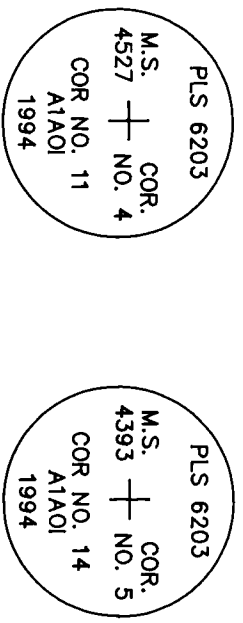
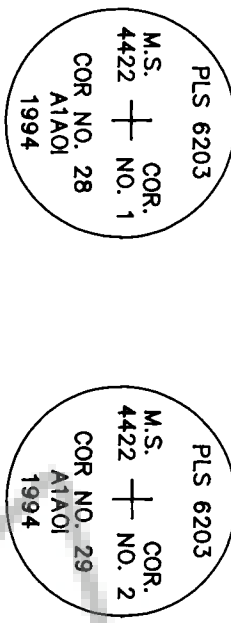


DETAILS OF CAPS SET AT PATENTED CLAIM CORNERS COMMON WITH AREA 1 - AREA OF INTEREST BOUNDARY CORNERS

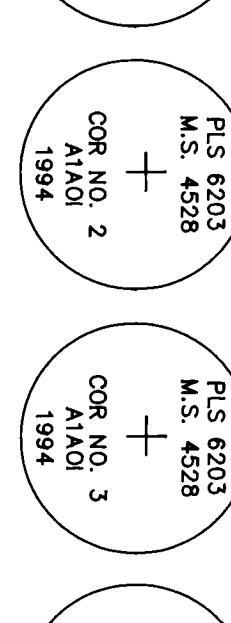
BALD EAGLE PATENT M.S. NO. 4527 GREAT DIVIDE PATENT M.S. NO. 4393



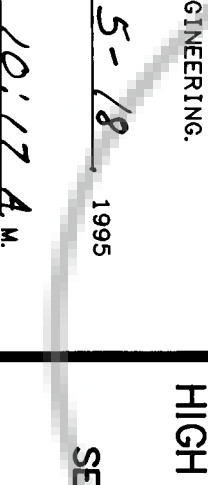
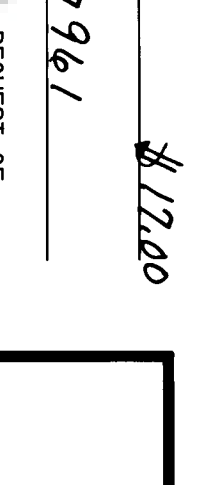
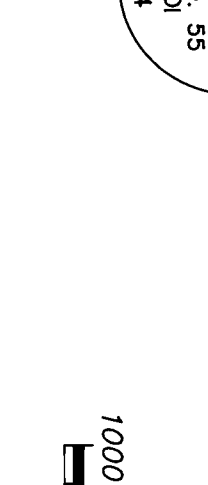
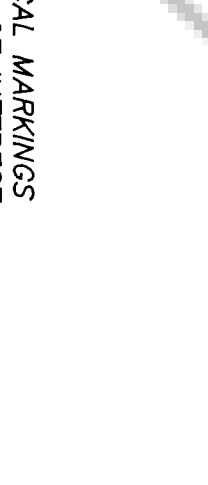
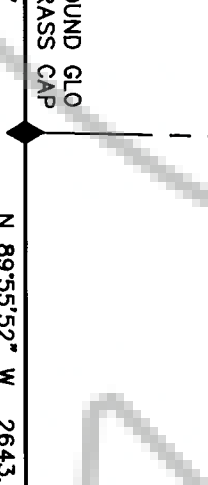
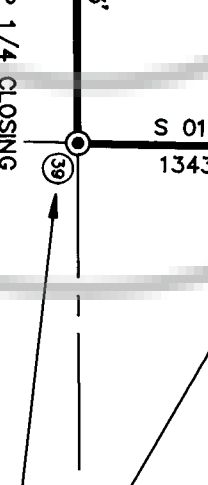
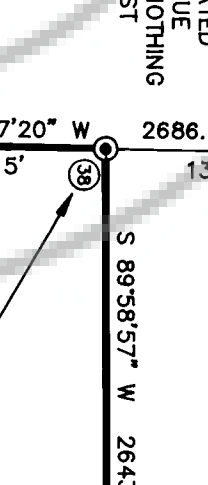
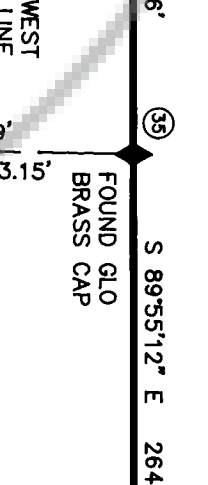
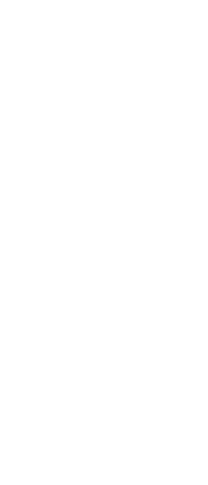
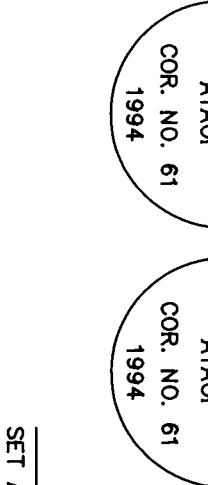
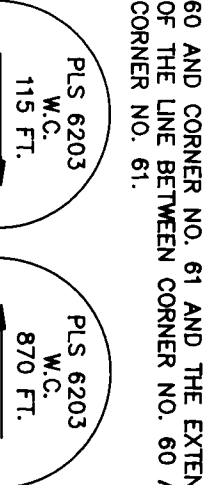
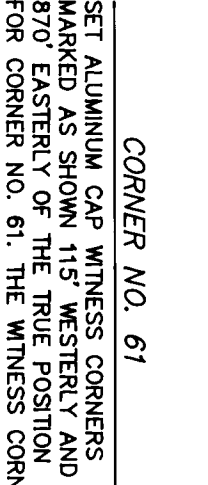
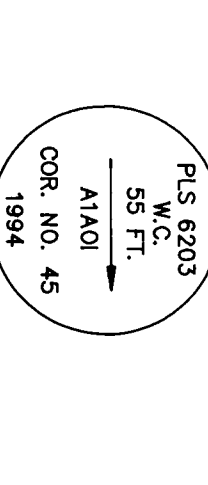
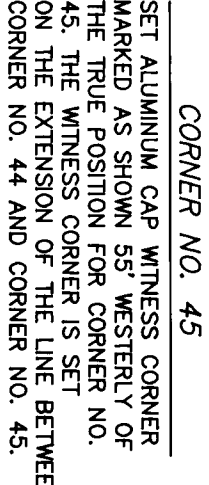
HOLT PATENT M.S. NO. 4422



JULY PATENT M.S. NO. 4528



DETAILS OF CAPS SET AS WITNESS CORNERS FOR CORNERS ON THE AREA 1 - AREA OF INTEREST BOUNDARY (SEE LEGEND FOR CORNERS WITNESSED)

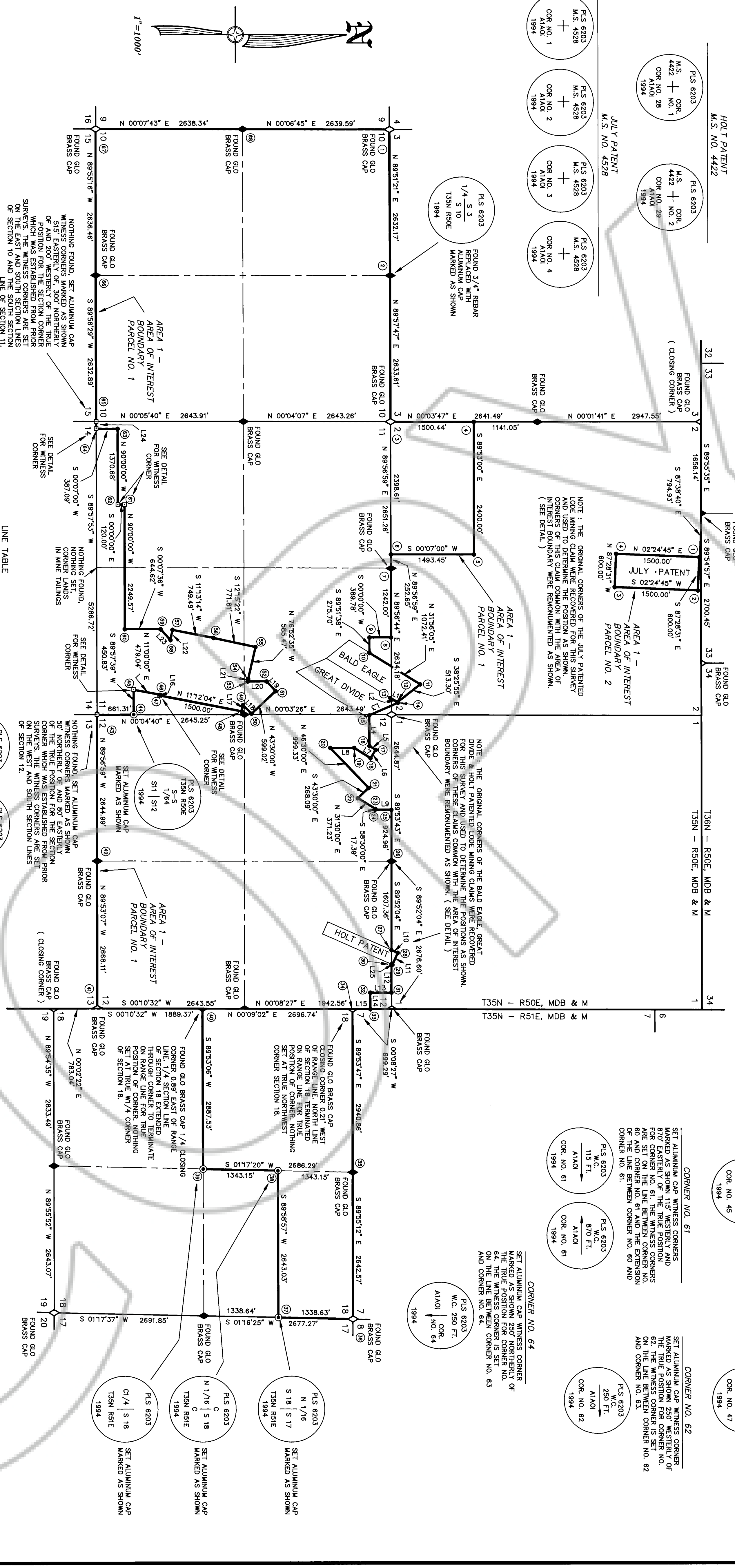


RECORD OF SURVEY FOR NEWMONT GOLD COMPANY & HIGH DESERT MINERAL RESOURCES OF NEVADA, INC. SECTIONS 1, 2, 10, 11, & 12 T35N - R50E, MDB & M SECTION 18, T35N - R51E, MDB & M EUREKA COUNTY, NEVADA

FILE NO. 157961 FILING DATA \$12,000
 DATE 5-18-1995
 TIME 10:17 A.M.
 M.M. REBALETTI EUREKA COUNTY RECORDER

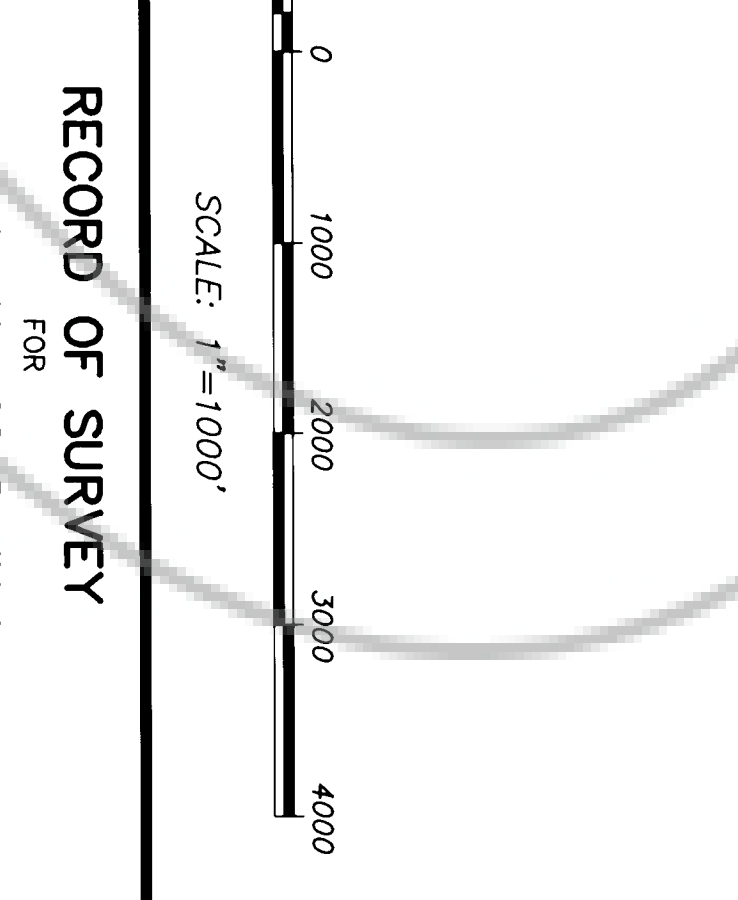
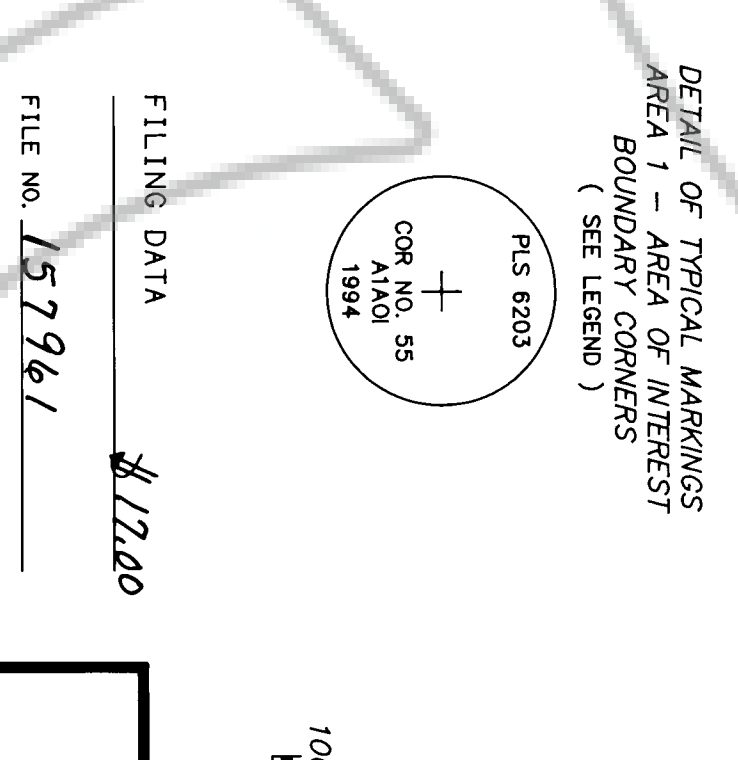
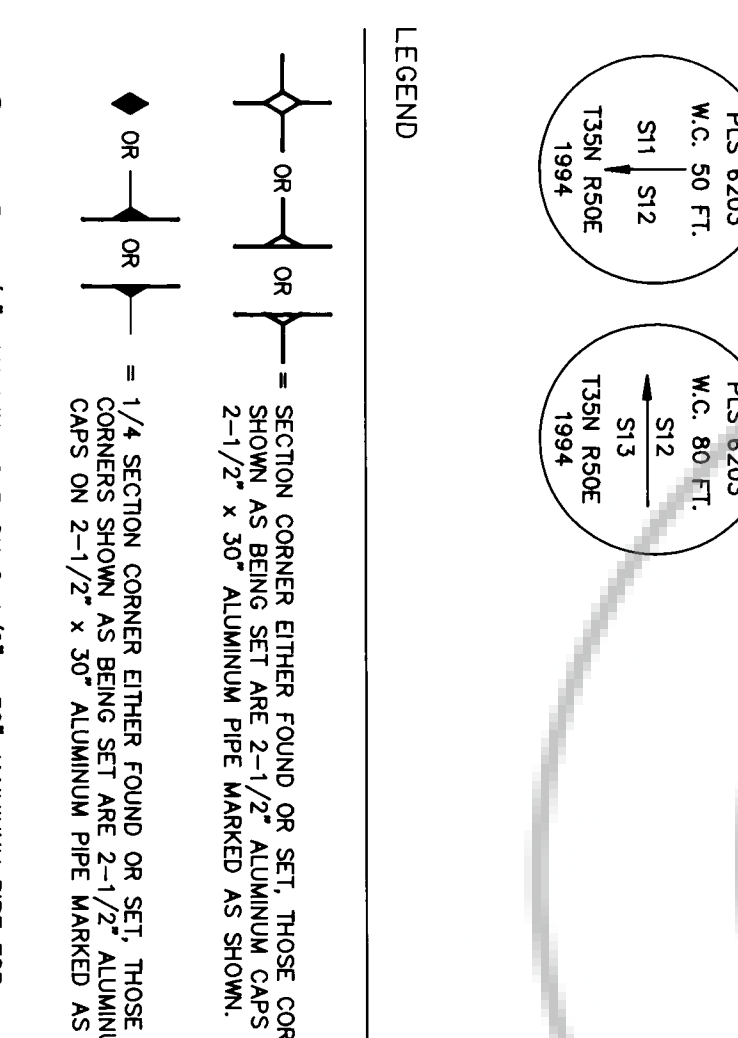
SCALE: 1" = 1000'

94009



LINE TABLE

LINE	DIRECTION	DISTANCE
L1	S 28°09'48" E	113.45
L2	S 23°44'46" E	564.49
L3	N 89°57'10" E	535.83
L4	N 21°09'03" E	133.20
L5	N 32°17'50" E	346.42
L6	S 00°00'00" E	430.20
L7	N 00°00'00" E	295.21
L8	N 46°30'00" E	220.26
L9	N 00°00'00" E	220.26
L10	S 65°52'04" E	235.00
L11	S 69°52'04" E	513.83
L12	S 00°00'00" E	381.45
L13	S 00°00'00" E	273.45
L14	S 00°00'00" E	273.45
L15	S 78°50'13" E	118.88
L16	N 78°13'45" W	118.88
L17	N 00°00'00" E	220.26
L18	N 78°13'45" W	220.26
L19	S 00°00'00" E	430.20
L20	S 00°01'27" E	341.02
L21	S 78°50'13" E	187.77
L22	S 00°01'27" E	150.16
L23	S 89°57'53" W	130.16
L24	S 24°07'55" W	18.00



SURVEYOR'S CERTIFICATE

1. ROBERT E. WORLEY, A PROFESSIONAL LAND SURVEYOR IN THE STATE OF NEVADA, CERTIFY THAT:

1. THIS PLAT REPRESENTS THE RESULTS OF A SURVEY CONDUCTED UNDER MY DIRECT SUPERVISION AND IN ACCORDANCE WITH THE PROVISIONS OF NEVADA DESERT MINERAL RESOURCES OF NEVADA, INC.

2. THE LANDS SURVEYED LIE WITHIN SECTIONS 1, 2, 10, 11, 12, T35N - R50E, MDB & M, AND SECTION 18, T35N - R51E, MDB & M AND THE SURVEY WAS COMPLETED ON MARCH 21, 1995.

3. THE MONUMENTS DEPICTED ON THE PLAT ARE OF THE CHARACTER SHOWN, AND OCCUPY THE POSITIONS INDICATED.

ROBERT E. WORLEY, P. L. S. 6203



NOTES:

1) BASIS OF BEARINGS: THE LINE BETWEEN THE FOUND W/4 CORNER AND THE NORTHWEST CORNER OF SECTION 10, T35N - R50E, MDB & M TAKEN AS N 00°08'45" E.

2) THIS MAP DEPICTS THE SURVEY AND MONUMENTATION OF THE AREA 1 - AREA OF INTEREST BOUNDARY AS DESCRIBED ON SCHEDULE B ATTACHED TO AND MADE A PART OF THE MEMORANDUM OF FIRST AMENDMENT TO VENTURE AGREEMENT ENTERED INTO BETWEEN HIGH DESERT MINERAL RESOURCES OF NEVADA, INC. AND NEWMONT GOLD COMPANY RECORDED IN THE OFFICE OF THE CLERK OF THE COUNTY OF EUREKA COUNTY, NEVADA, IN BOOK 275, AT PAGE 210, OR OFFICIAL RECORDS.