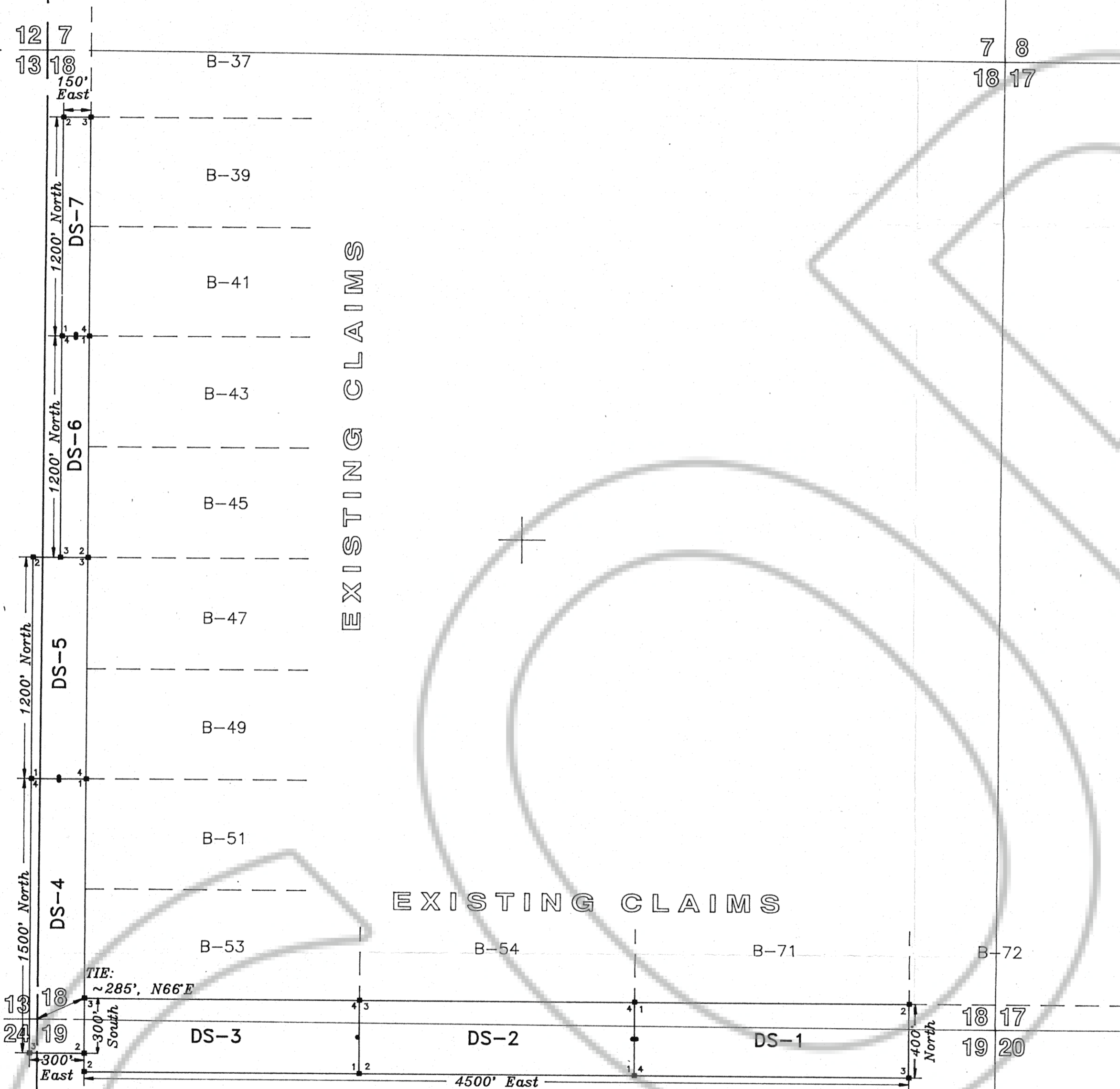


R 48 E R 49 E

T 31 N



EXISTING CLAIMS

EXISTING CLAIMS

EXPLANATION

- Monuments of Location are set with 2" x 2" x 4" wood posts.
- Claim corners are set with 2" x 2" x 4" wood posts. Monuments of Location are set 10' into claim.

CLAIMS MEASURE AS FOLLOWS:

- DS-1, DS-2, DS-3 - measure 1500' x 400'
- DS-4 - measures 1500' x 300'
- DS-5 - measures 1200' x 300'
- DS-6 and DS-7 - measure 1200' x 150'

LOCATION DATES:

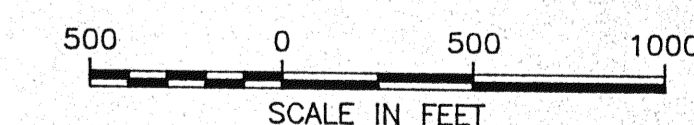
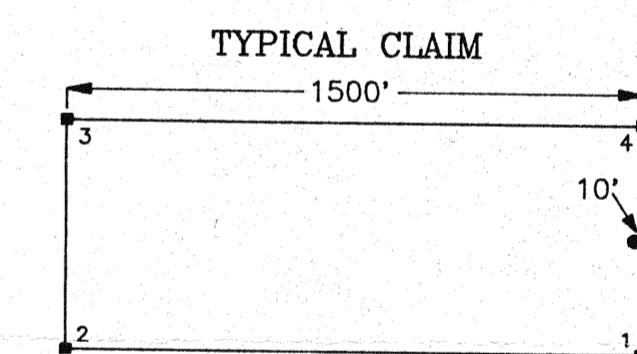
- DS-1 through DS-3 - April 20, 1995
- DS-4 through DS-7 - April 21, 1995

LOCATOR:

Rayrock Mines, Inc., dba Cordex Exploration Co.
 573 E. 2nd Street
 Reno, Nevada 89502

TIE:

The NW Corner of DS-3 bears approximately 285°, N66'E from the SW Corner of Sec. 18, T31N-R49E.



CORDEX EXPLORATION CO.

DS-1 through DS-7 Lode Mining Claims

Secs. 13 & 24, T31N-R48E and
 Secs. 18 & 19, T31N-R49E, M.D.B.&M.
 Unknown Mining District, Eureka County, Nevada

FILED AT THE REQUEST OF *Rayrock Mines*
 on *June 19* 19 *95*, at *11* mins, past *11* A.M.
 RECORDS OF EUREKA COUNTY, NEVADA M.N. REBELEATI, Recorder
 File No. *18814* Fee \$ *115.00*

Compiled By:
 Drawn By: J.A.T.
 Drawing: DSCLAIMS.DWG
 View: PLOT

Date: June 5, 1995
 Revised: