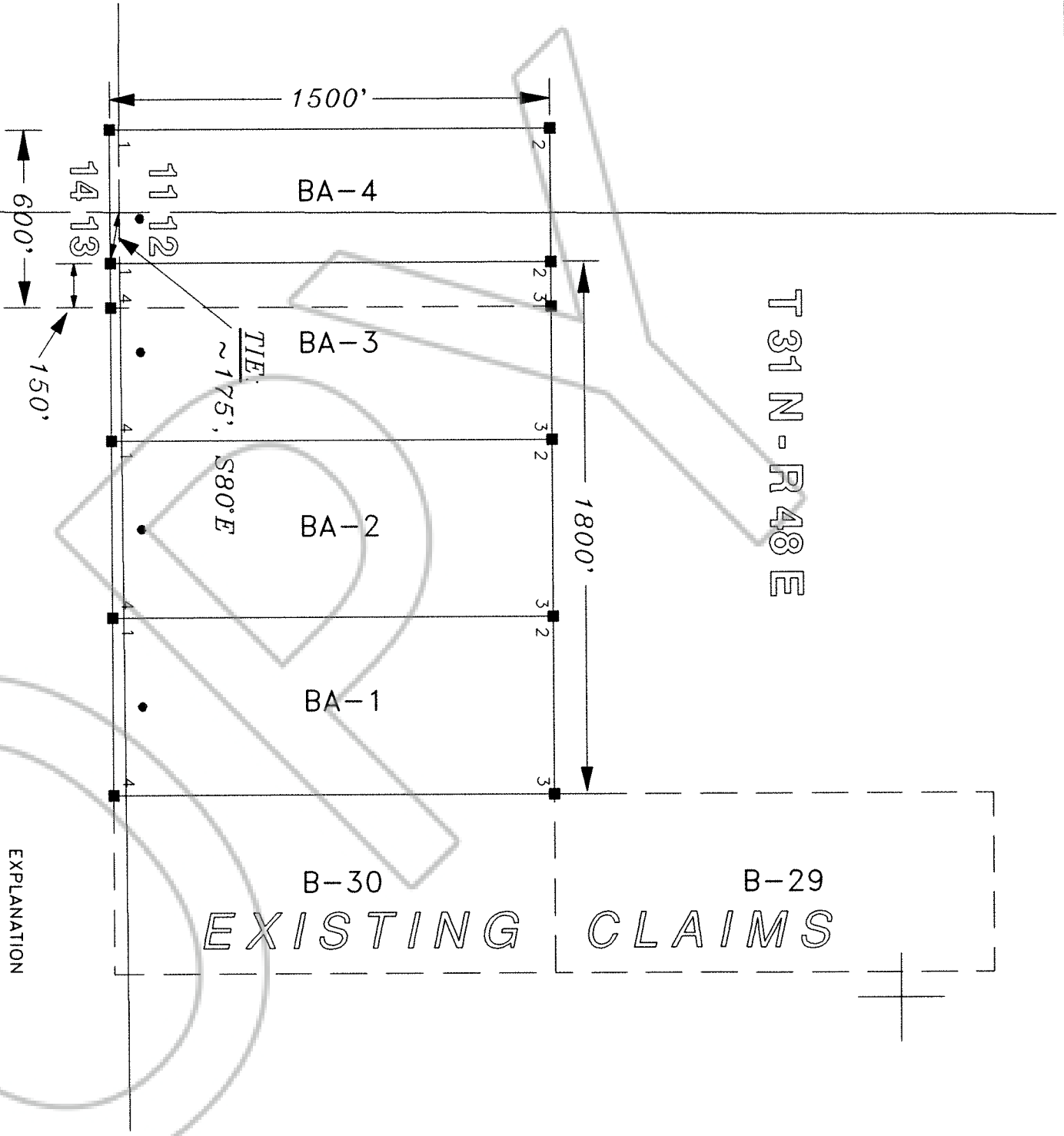


T 31 N - R 48 E



EXPLANATION

- Monuments of Location 2" x 2" x 4' wood posts.
- Claim corners 2" x 2" x 4' wood posts.
- All Monuments of Location are set 100' into claim.
- All claims measure 600' x 1500'.

LOCATION DATES:

BA-1 through 4 June 23, 1995

CLAIM LOCATOR:

Royrock Mines Inc. dba Cordex Exploration Co.  
573 E. 2nd Street  
Reno, NV 89502

TIE:

The SW Corner of BA-3 lies approximately 175'  
S80E from SW Corner of Section 12, T31N-R48E.

FILED AT THE REQUEST OF Cordex Exploration  
 on Aug 14 1995, at 31 mins, past 2 A M.  
 RECORDS of EUREKA COUNTY, NEVADA MIN. REBALEATI, Recorder  
 File No. 158453 Fee \$ 60.00

CORDEX EXPLORATION CO.

Lode Mining Claims  
BA-1 through BA-4

Secs. 11-14, T31N-R48E, M.D.B.&M.  
Unknown Mining District  
Eureka County, Nevada

Drawn By: JAT Date: August 7, 1995  
 Drawing: BA1-4CLM.DWG Revised:  
 View: PLOT

TYPICAL CLAIM

