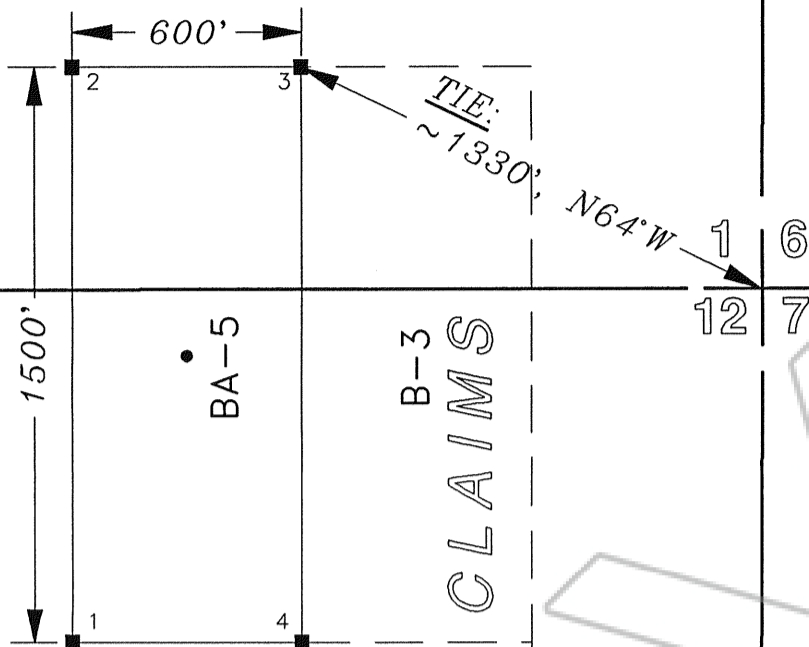


R 48 E

R 49 E

T 32 N

T 31 N



B-3
B-4
EXISTING CLAIMS



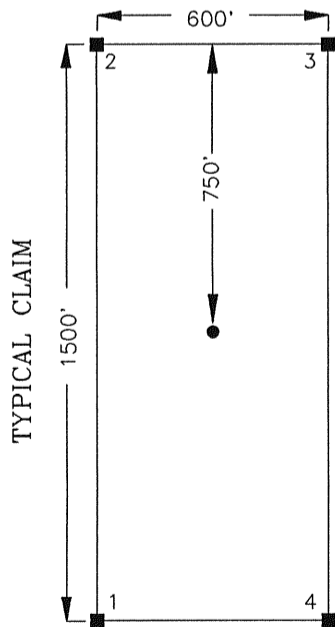
EXPLANATION

- Monument of Location 2" x 2" x 4' wood posts.
 - Claim corners 2" x 2" x 4' wood posts.
- Monument of Location is set 750' into claim.
Claim measure 600' x 1500'.

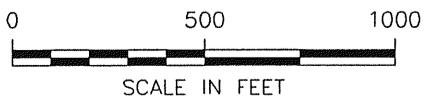
LOCATION DATE:
BA-5 July 31, 1995

CLAIM LOCATOR:
Rayrock Mines Inc. dba Cordex Exploration Co.
573 E. 2nd Street
Reno, NV 89502

TIES:
The NE Corner of BA-5 lies approximately 1330',
N64°W from NE Corner of Section 12, T31N-R48E.



FILED AT THE REQUEST OF Cordex Exploration
 on Aug 14 19 95, at 33 mins, past 9 A M.
 RECORDS of EUREKA COUNTY, NEVADA M. N. REBALEATI, Recorder
 File No. 158455 Fee \$ 15.00



CORDEX EXPLORATION CO.

LODE MINING CLAIM
BA-5

Sec. 12, T31N-R48E and
Sec. 1, T32N-R48E, M.D.B.&M.
Eureka County, Nevada

Drawn By: J.A.T.
Drawing: BA-5CLM.DWG
View: PLOT

Date: August 7, 1995
Revised: