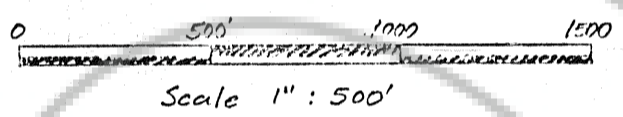


W-50 through W-53, W-55 and W-56

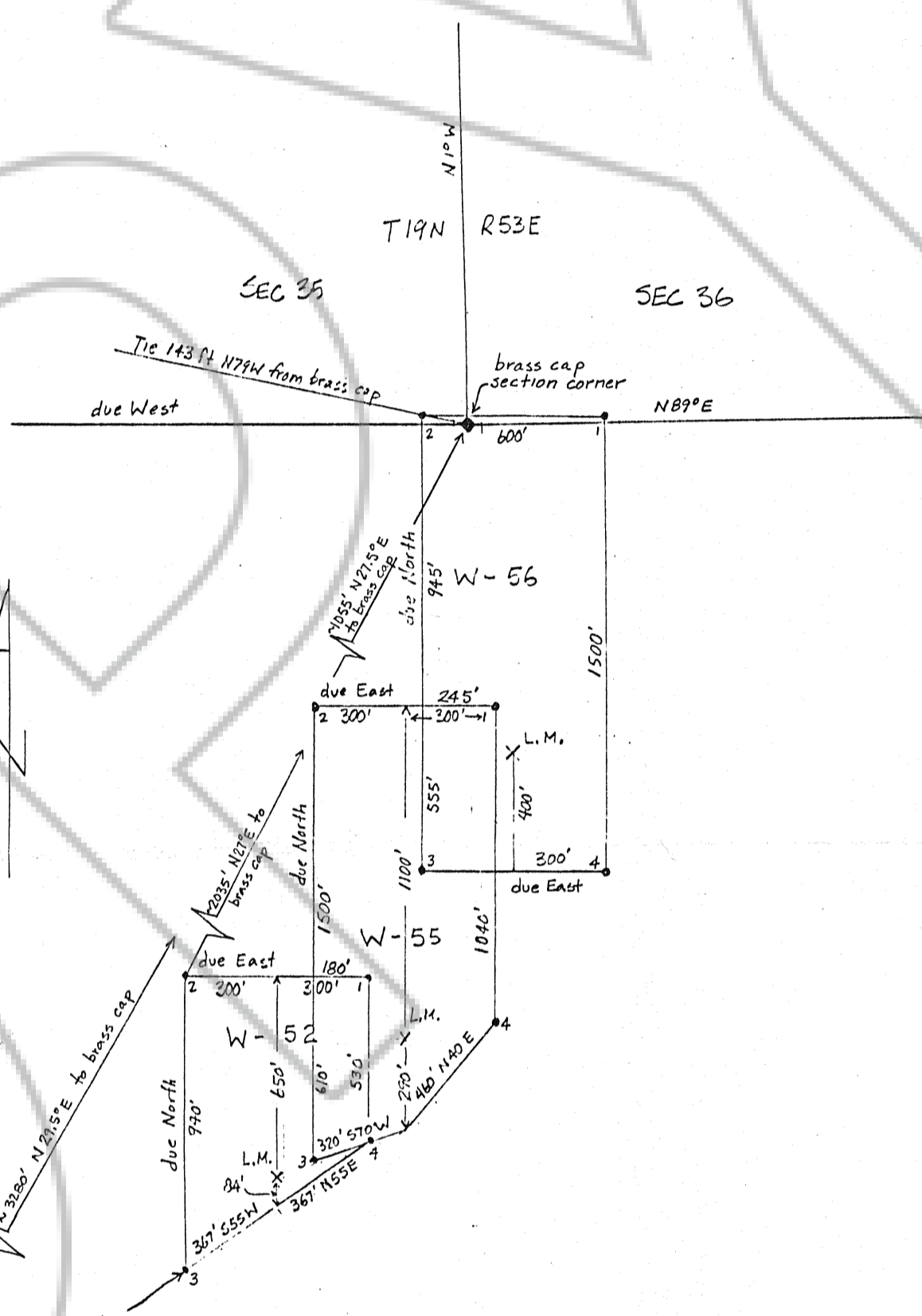
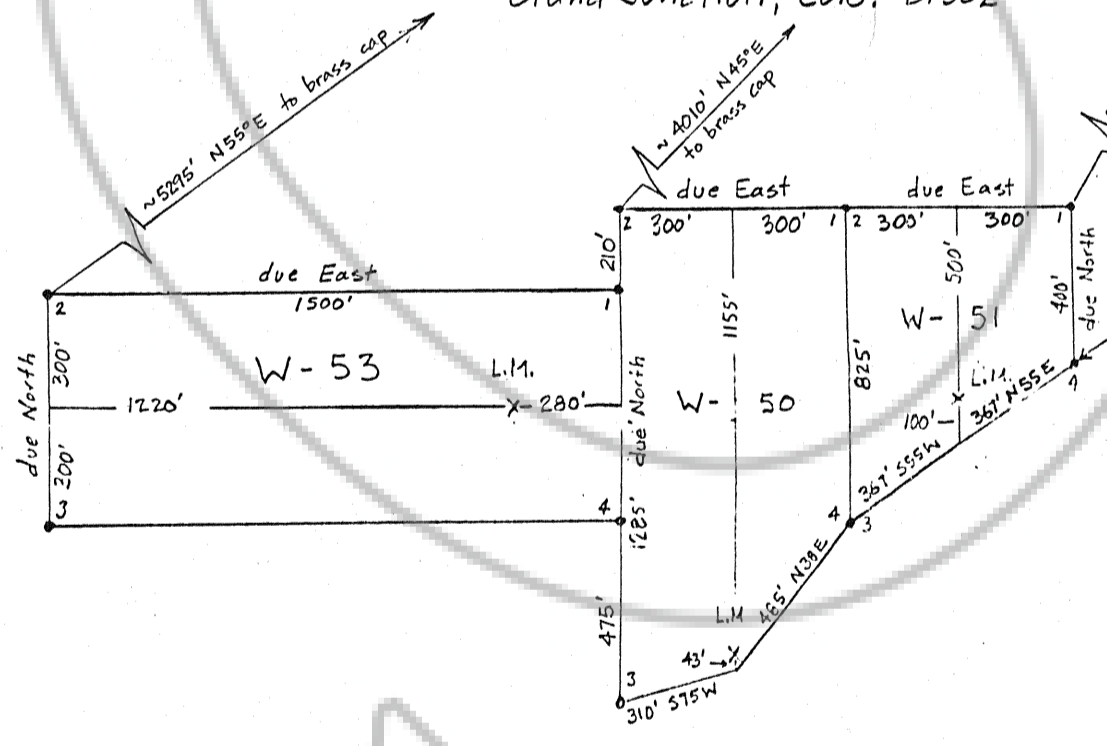
Protracted NE 1/4, SE 1/4 and SW 1/4 of Section 2
Protracted NW 1/4 of Section 1 T19N R53E

MDB & M
Eureka County, Nevada



Located: 22 May 1995 (W-50, 51 & 52)
14 June 1995 (W-53)
15 June 1995 (W-55 & 56)

By: Windfall Venture
P.O. Box 2183
Grand Junction, Colo. 81502



FILED AT THE REQUEST OF Cambior Exploration USA Inc
on Aug 31 1995, at 55 mins, past 2 P.M.
RECORDS OF EUREKA COUNTY, NEVADA M. N. REBALEATI, Recorder
File No. 158705 Fee \$ 10.00

Cemenda 158472