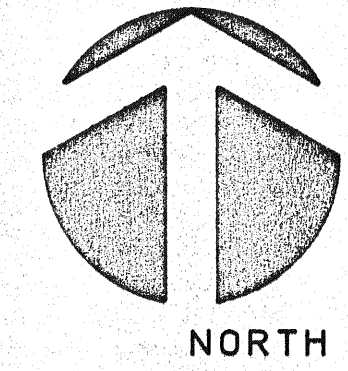
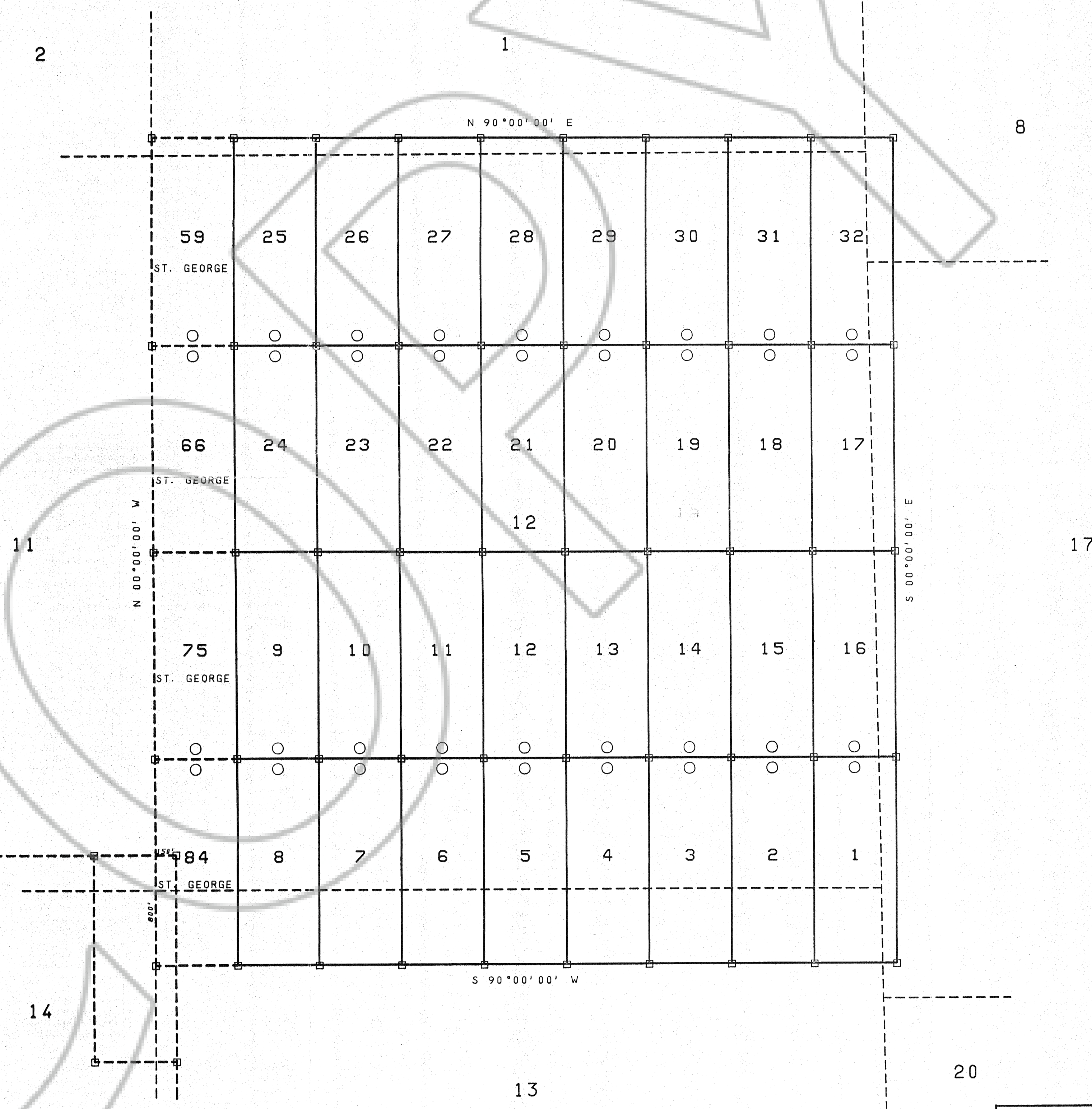


MAP of IU LODE CLAIMS



□ = MONUMENT LOCATION
 ALL CLAIMS ARE 600' x 1500', UNLESS OTHERWISE NOTED
 ALL LOCATION MONUMENTS ARE OFFSET 10' FROM END CENTERS UNLESS OTHERWISE NOTED
 ALL LOCATION MONUMENTS AND CORNERS ARE MONUMENTED WITH 2"x2"x4" LENGTH 2x2 WOOD.

OWNER:
GOLDEX CORP.
 P.O. BOX 461
 PLEASANT GROVE,
 UTAH 84062



SCALE: 1" = 500'
 LOCATED SEPTEMBER 14, 1995
 CORNERS DONE BY SEPTEMBER 19, 1995

FILED AT THE REQUEST OF *GolDEX Corp.*
 on *Sept 21 1995*, at *5:56* p.m., past *9:21* a.m.
 RECORDS OF EUREKA COUNTY, NEVADA M. N. REBALEATI Recorder
 File No. **159036** Fee \$ *480.00*

MAP of IU LODE CLAIMS TOWNSHIP 33N RANGE 50E MOUNT DIABLO MERIDIAN EUREKA COUNTY, NEVADA			
SCALE:	DR. BY JMA	TRACING No.	REVISIONS
1" = 500'	DATE: 9/20/95	L - 9387	
SHEET 1 of 1		PREPARED BY DUDLEY & ASSOCIATES	