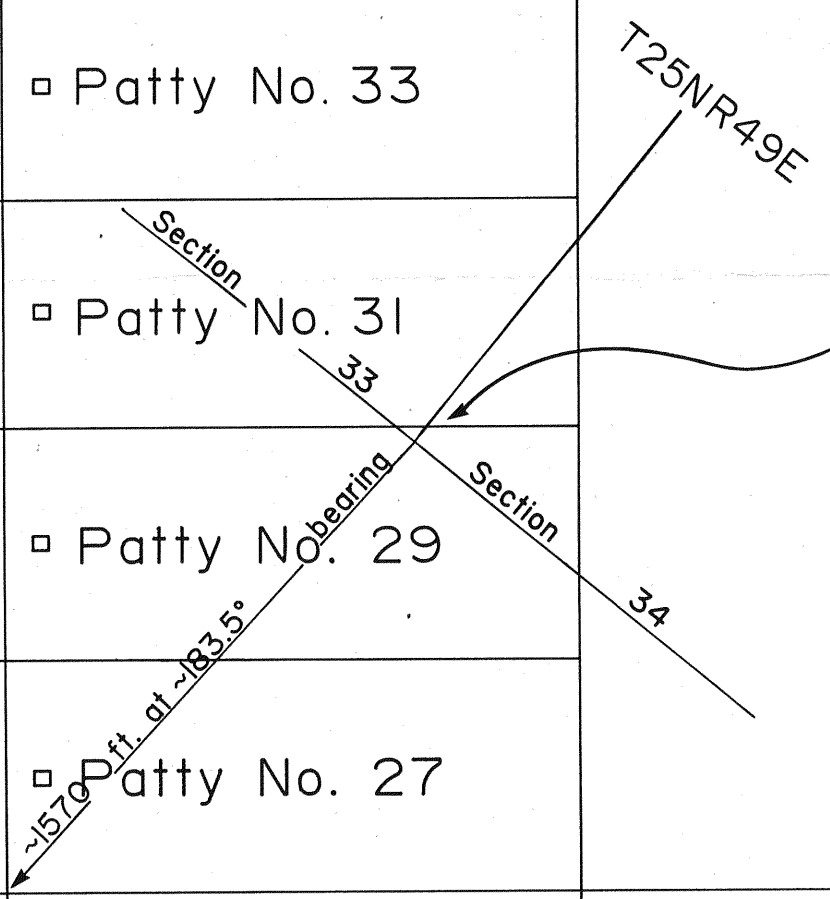
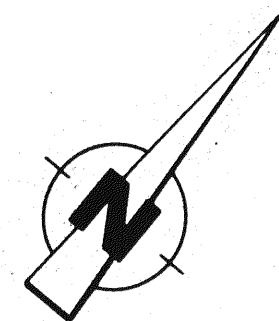




Patty No. 13	▫	Patty No. 38	▫	▫	Patty No. 39
Patty No. 12	▫	Patty No. 36	▫	▫	Patty No. 37
Patty No. 11	▫	Patty No. 34	▫	▫	Patty No. 35
Patty No. 10	▫	Patty No. 32	▫	▫	Patty No. 33
Patty No. 9	▫	Patty No. 30	▫	▫	Patty No. 31
		Patty No. 28	▫	▫	Patty No. 29
		Patty No. 26	▫	▫	Patty No. 27
		Patty No. 24	▫	▫	Patty No. 25
		Patty No. 22	▫	▫	Patty No. 23
		Patty No. 20	▫	▫	Patty No. 21
		Patty No. 18	▫	▫	Patty No. 19
		Patty No. 16	▫	▫	Patty No. 17
		Patty No. 14	▫	▫	Patty No. 15
				Patty No. 40	▫
				Patty No. 42	▫
				Patty No. 44	▫
				Patty No. 46	▫
				Patty No. 48	▫
				Patty No. 50	▫
				Patty No. 52	▫
				Patty No. 54	▫
					▫
					Patty No. 41
					Patty No. 43
					Patty No. 45
					Patty No. 47
					Patty No. 49
					Patty No. 51
					Patty No. 53
					Patty No. 55
					Patty No. 56



Survey Marker T25NR49E section 33 | section 34
Common corner of Patty No. 24, 25, 26 and 27 is located approximately 1570 feet at about a 183.5° bearing from above mentioned survey marker.

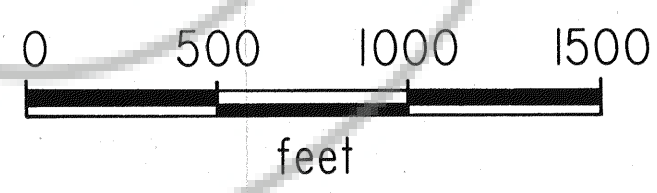


Patty Claim Group
includes: Patty No. 9 through 56 inclusive.
Located: T25NR49E sections 33 and 34
T24NR49E sections 2, 3, 4 and 10

Unsurveyed Area
Unknown Mining District
Eureka County, Nevada

▫ Location Monument

Scale: 1" = 500 feet



FILED AT THE REQUEST OF White Knight Resources
on Oct 3 1995, at 13 mins, past 1 P.M.
RECORDS OF EUREKA COUNTY, NEVADA M. N. REBALEATI, Recorder
File No. 159427 Fee \$ 720.00

Patty Claims - Damele Group	
White Knight Resources Ltd.	
Delta Gold Mining Corp.	
Eureka County, Nevada	
DATE: Sept. 19, 1995	DRAWN: BDS/ij
SCALE: 1" = 500'	FIGURE No.