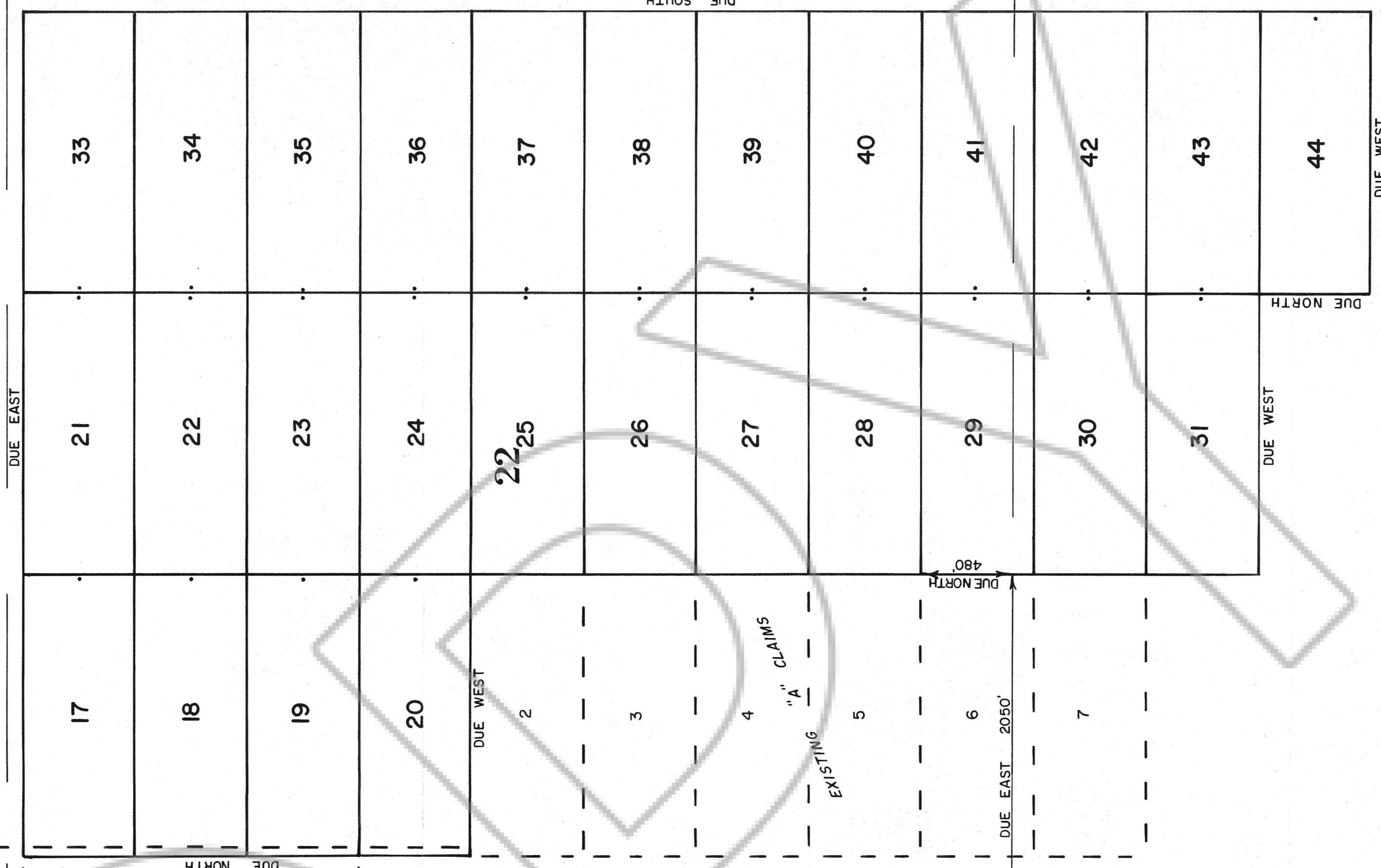
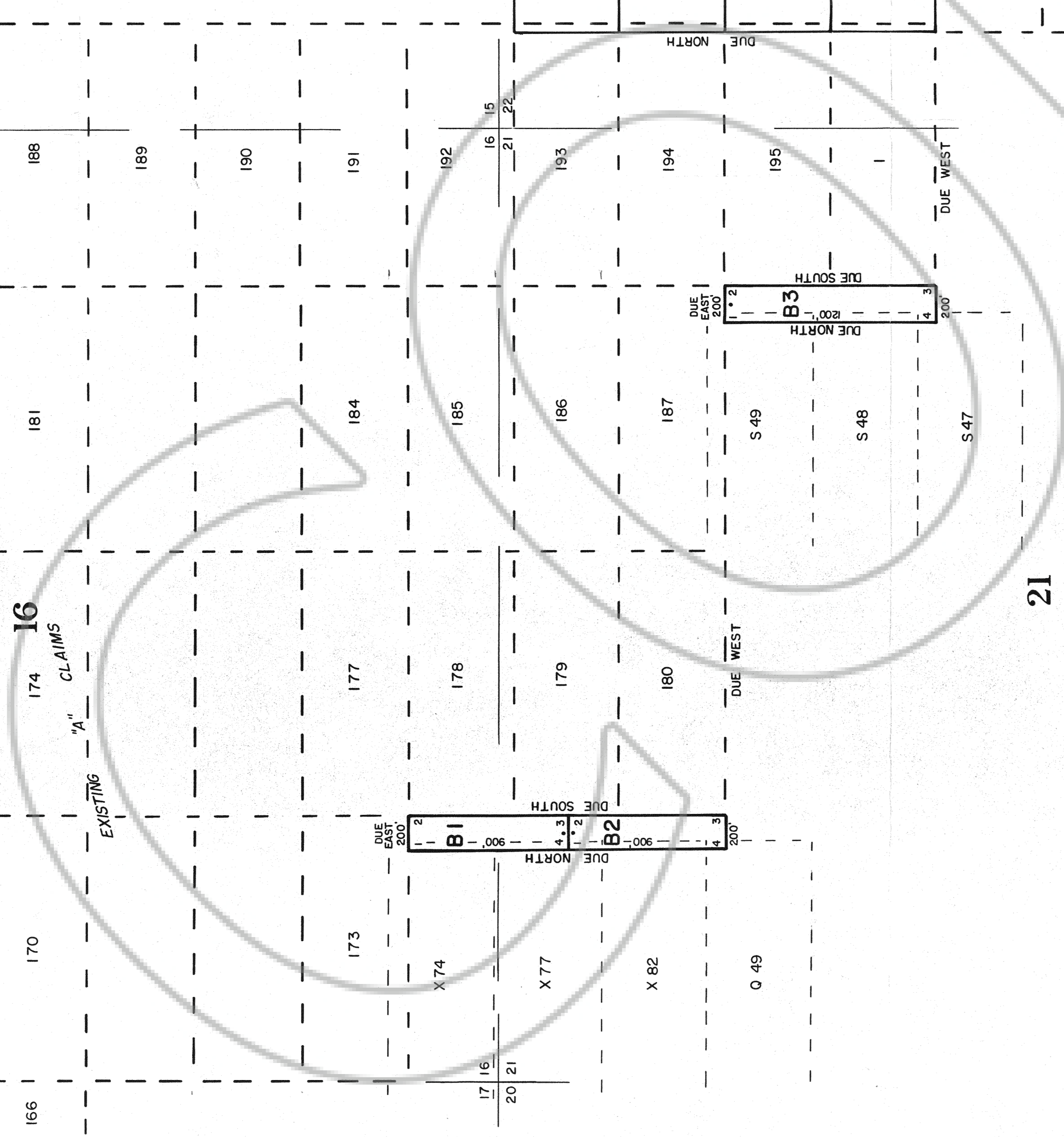
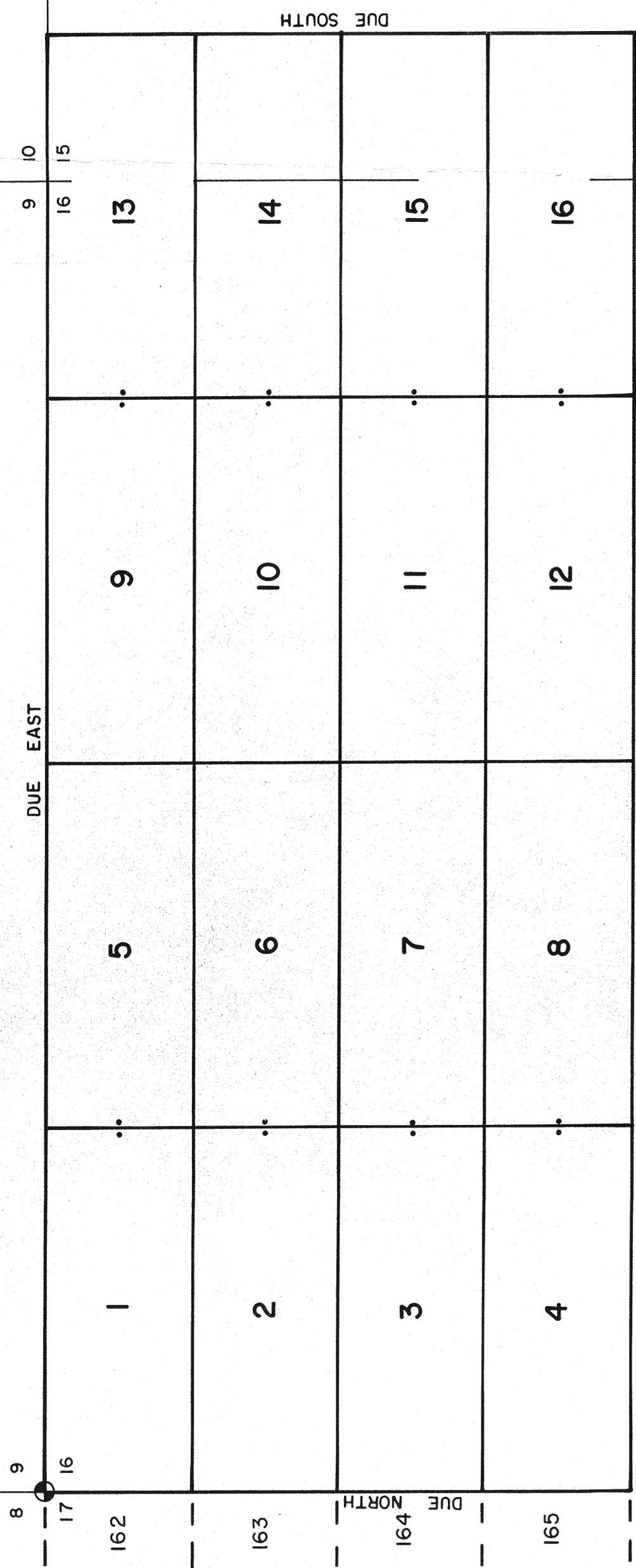


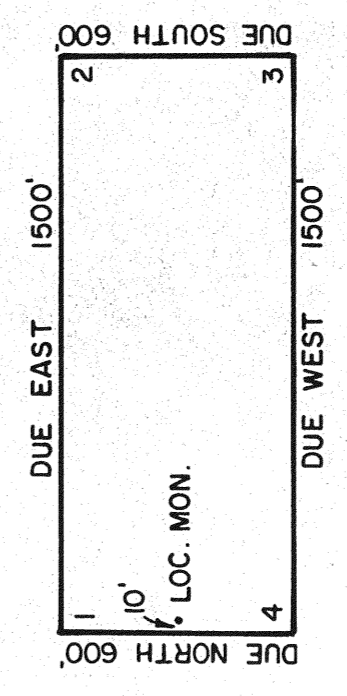
9

10

159706



**TYPICAL CLAIM & CORNER NUMBERS**



ALL CLAIMS ARE 1500' x 600' EXCEPT WHERE NOTED.  
 ALL LOCATION MONUMENTS ARE 10' IN FROM THE END CENTER.  
 ALL CLAIM CORNERS AND LOCATION MONUMENTS ARE 2' x 2' x 4' WOOD POSTS.  
 \* DENOTES A FOUND SECTION CORNER.

**LOCATION DATES:**

SEPT. 15, 1995 - - - - C 17-31, 33-44  
 SEPT. 17, 1995 - - - - C 1-16  
 OCT. 1, 1995 - - - - - B 1-3

**"B" LODE MINING CLAIMS NO'S 1-3 & "C" LODE MINING CLAIMS NO'S 17-31 & 33-44**  
 SECS. 15, 16, 21, 22 & 27, T 24 N, R 49 E, M.D.B. & M.  
 EUREKA COUNTY, NEVADA  
 OWNER:  
 GOLD CAPITAL CORPORATION  
 55 MADISON ST. SUITE 745  
 DENVER, CO 80206

FILED BY THE REQUEST OF Gold Capital Corp.  
 ON 09/23/95 AT 10:31 A.M. DISTRICT CLERK  
 RECORDS OF EUREKA COUNTY, NEVADA M.I.N. RECORDS DIVISION  
 FILE NO. 159706 Fee \$ 285.00  
**159706**

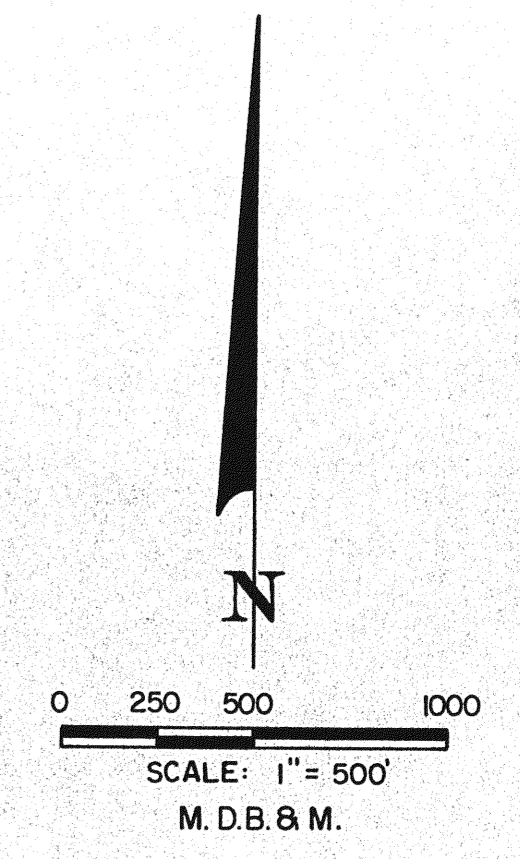
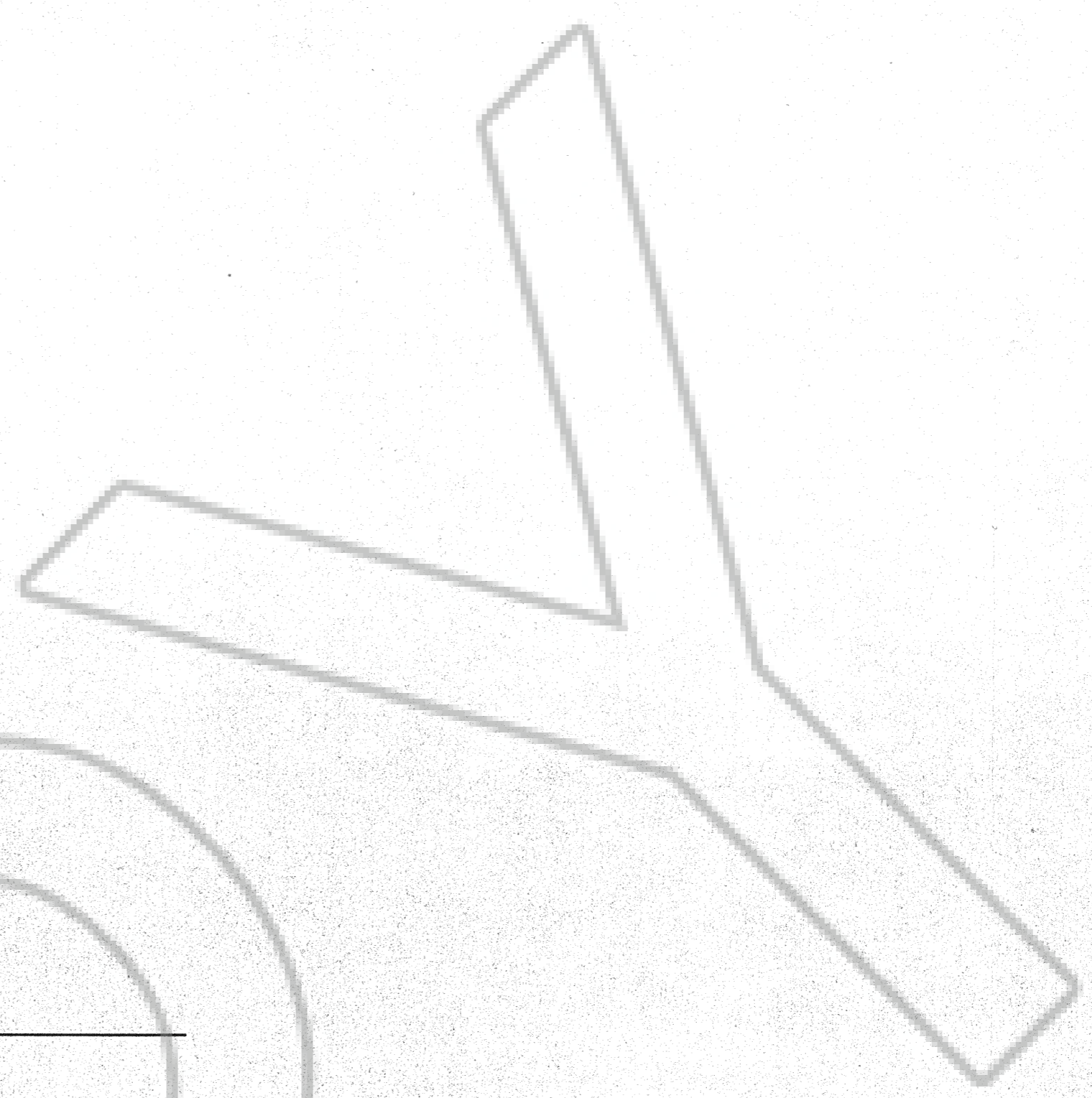
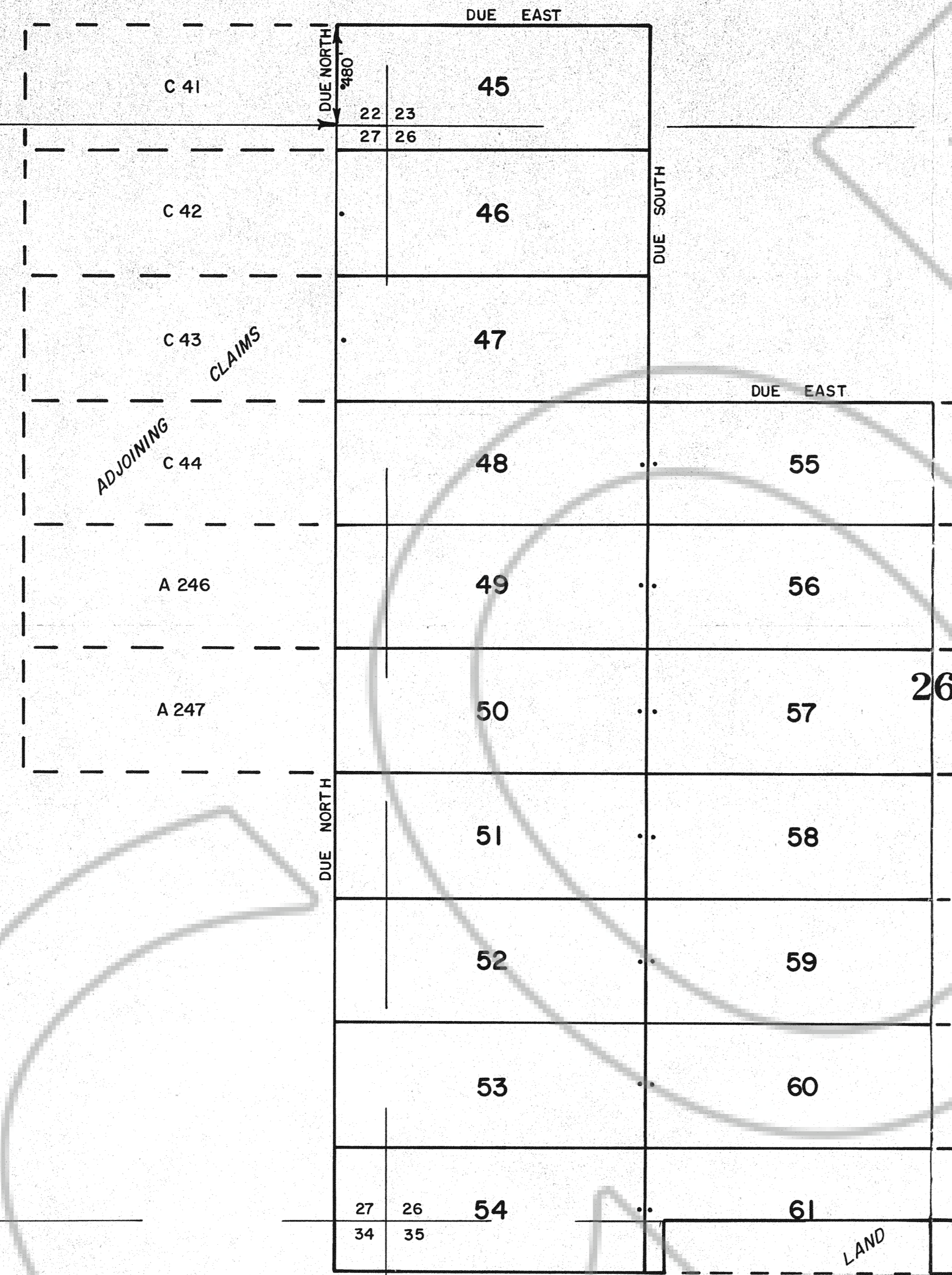
R 49 E

22

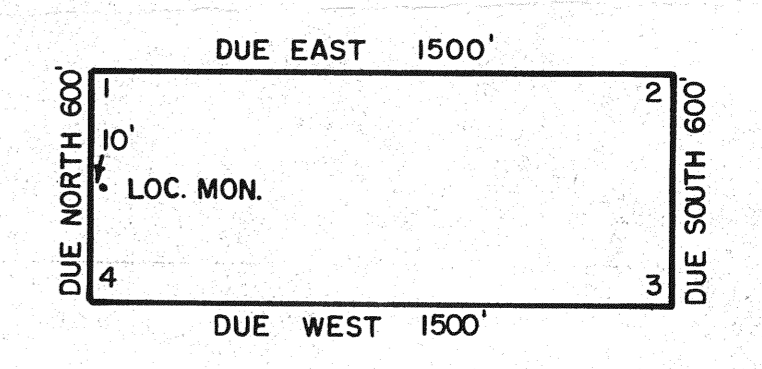
23

21  
28

DUE EAST  
5050'



TYPICAL CLAIM & CORNER NUMBERS



ALL CLAIMS ARE 1500' x 600'.  
 ALL LOCATION MONUMENTS ARE 10' IN FROM THE END CENTER.  
 ALL CLAIM CORNERS & LOCATION MONUMENTS ARE 2" x 2" x 4' WOOD POSTS.  
 ⊕ DENOTES A FOUND SECTION CORNER

LOCATION DATE:

SEPT. 30, 1995 - - - - - 45-61

34

35

FILED AT THE REQUEST OF Gold Capital Corp  
 on Oct 23 95 at 41 mins, past 11 A.M.  
 RECORDS OF EUREKA COUNTY, NEVADA M. N. REBALETTI, Recorder  
 File No. 159706 Fee \$ 925.00

**"C" LODE MINING CLAIMS NO'S 45-61**  
 SECS. 22, 23, 26, 27, 34 & 35, T 24 N, R 49 E, M.D.B. & M.  
 EUREKA COUNTY, NEVADA  
 OWNER:  
 GOLD CAPITAL CORPORATION  
 55 MADISON ST. SUITE 745  
 DENVER, CO 80206