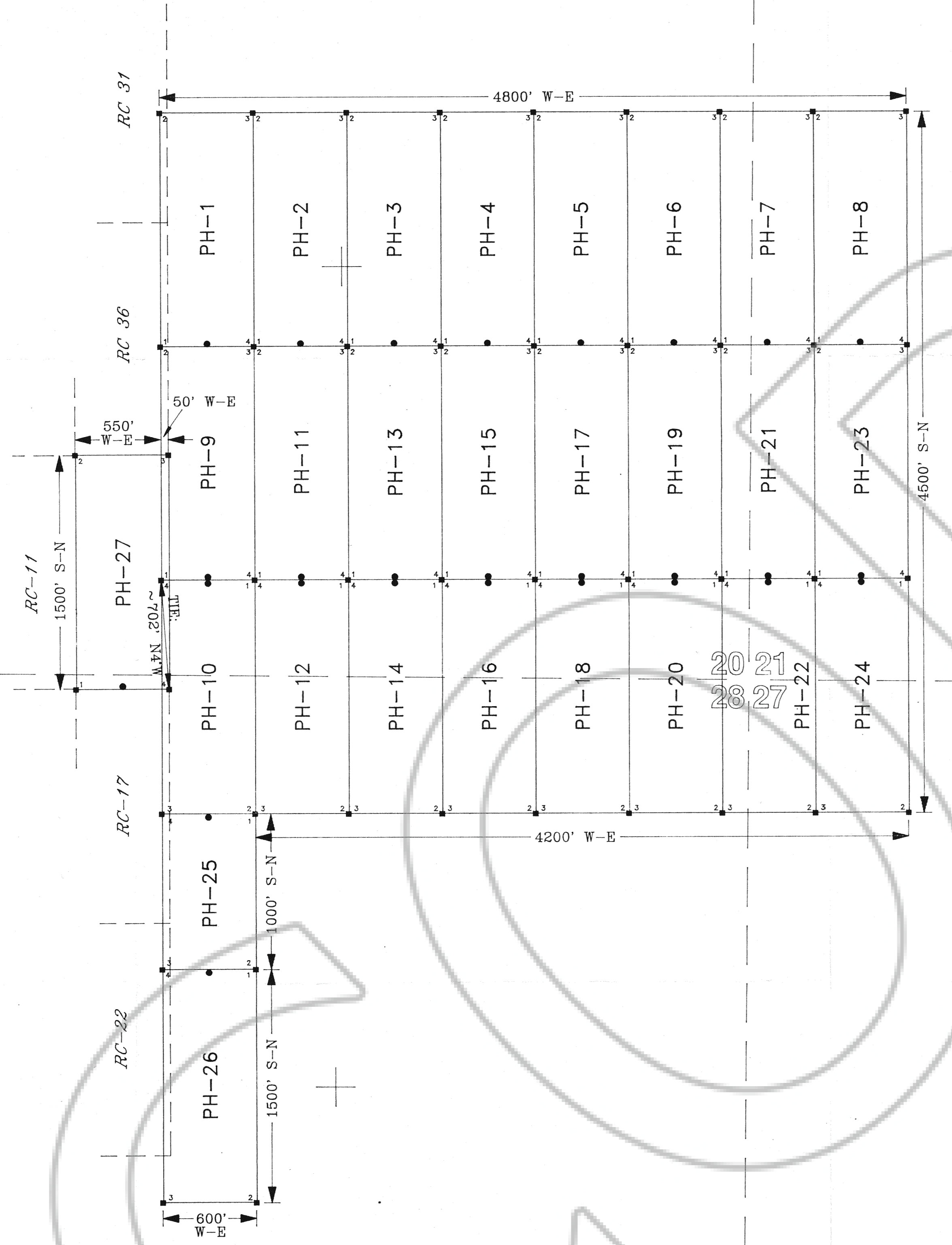


EXISTING CLAIMS



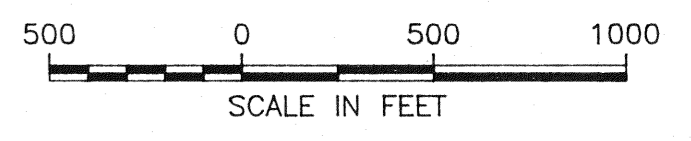
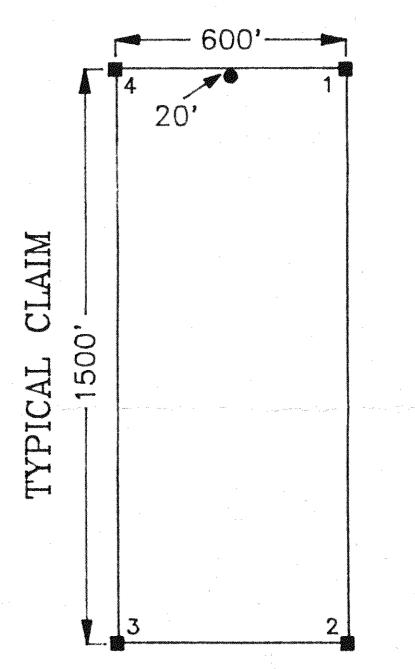
EXPLANATION

- Monuments of Location are set with 2"x2"x4' wood posts.
 - Claim Corners are set with 2"x2"x4' wood posts.
- All claims measure 1500' x 600' except PH-25 which measures 1000' x 600'.
- Monuments of Location are set 20' into claim.

LOCATION DATES:
 PH-1 through PH-24 - September 29, 1995
 PH-25 through PH-27 - September 30, 1995

LOCATOR:
 Rayrock Mines, Inc. dba Cordex Exploration Co.
 573 E. 2nd Street
 Reno, Nevada 89502

TIES:
 The NW Corner (4) PH-10 bears approximately 702' N4°W from the NE Corner of RC-17.
 The SE Corner (4) PH-27 bears approximately 702' S4°E from the NW Corner (4) of PH-10.



CORDEX EXPLORATION CO.
PH-1 through PH-27
Lode Mining Claims

Unsurveyed Sections 20, 21, 27, 28
 T23N-R50E, M.D.B.&M.
 Unknown Mining District
 Eureka County, Nevada

FILED AT THE REQUEST OF *Cordex Exploration*
 on *Nov 14 95* at *11:49* mins, past *11:49* AM.
 RECORDS OF EUREKA COUNTY, NEVADA M. N. REBALEAU, Recorder
 File No. **159849** Fee \$ **405.00**

Compiled By:
 Drawn By: J.A.T.
 Drawing: PHCLMS.DWG
 View: Plot

Date: November 1, 1995
 Revised: