

FILE NO. 159861  
 FILED AT THE REQUEST OF  
 MT. WHEELER POWER, INC.  
 ON 24 DAY OF NOVEMBER, 1995.  
 DEPUTY COUNTY RECORDER'S OFFICE  
 EUREKA COUNTY, NEVADA

RECORDER: M N REBALCATE  
 DEPUTY: Sharon Stewart  
 FEE: 17.00

UTILITY EASEMENT  
 COMMENCING AT A G.D. BRASS CAP MARKED AP1 91, AP1 90, RMC  
 1995, THENCE S 59°36'12"W, 235.77' TO AN EXISTING POWER  
 POLE AT THE NORTHEASTERLY CORNER OF MONROE AND BULLION  
 STREETS, SAID POLE BEING THE POINT OF BEGINNING; THENCE  
 N 88°06'32"E, 103.14 FEET TO A POINT 5 FEET WESTERLY OF  
 NDOT'S WESTERLY RIGHT OF WAY, HIGHWAY 50; THENCE N 89°06'32"E,  
 114.31 FEET TO A POINT 11.5 FEET EASTERLY OF NDOT'S EASTERLY  
 RIGHT OF WAY, HIGHWAY 50; THENCE N 88°06'32"E, 149.36 FEET  
 THENCE N 88°06'32"E, 34.5 FEET TO AN ANCHOR POINT AND THE  
 THIRDADE DESCRIBED CENTERLINE OF A 25 FOOT WIDE OVERHEAD  
 UTILITY EASEMENT FOR ELECTRIC, TELEPHONE AND CABLE T.V. BEING  
 397.31 FEET IN LENGTH AND CONTAINING 9,932.75 SQ. FT. (0.228 AC.)  
 MORE OR LESS.

COUNTY COMMISSION APPROVAL

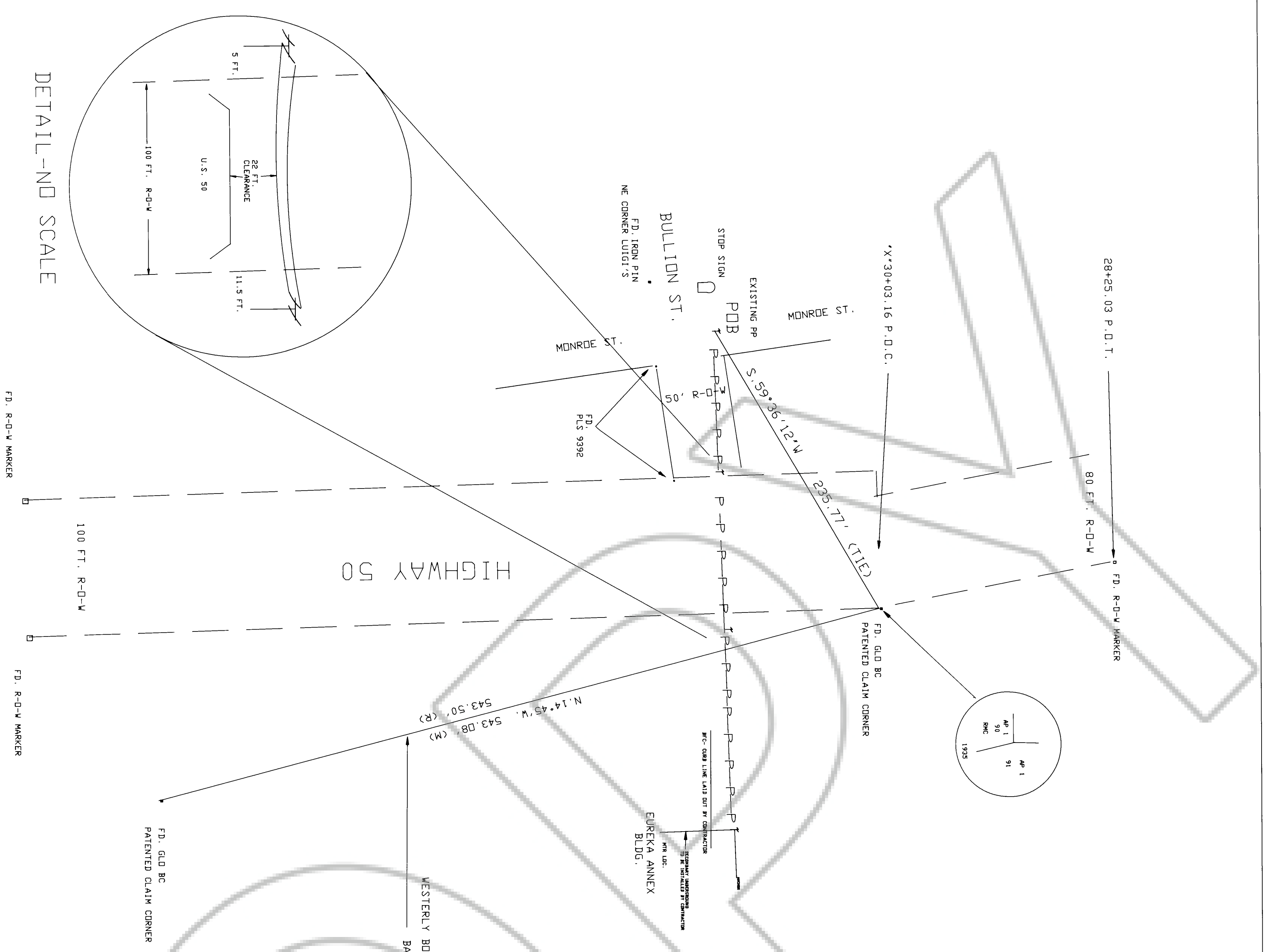
AT A REGULAR MEETING OF THE EUREKA COUNTY COMMISSION, STATE OF  
 NEVADA, HELD ON THIS 24 DAY OF November, 1995, THIS MAP WAS  
 DULY APPROVED.

CHAIRMAN W. H. O'NEILL  
 COUNTY CLERK Paul Champagne

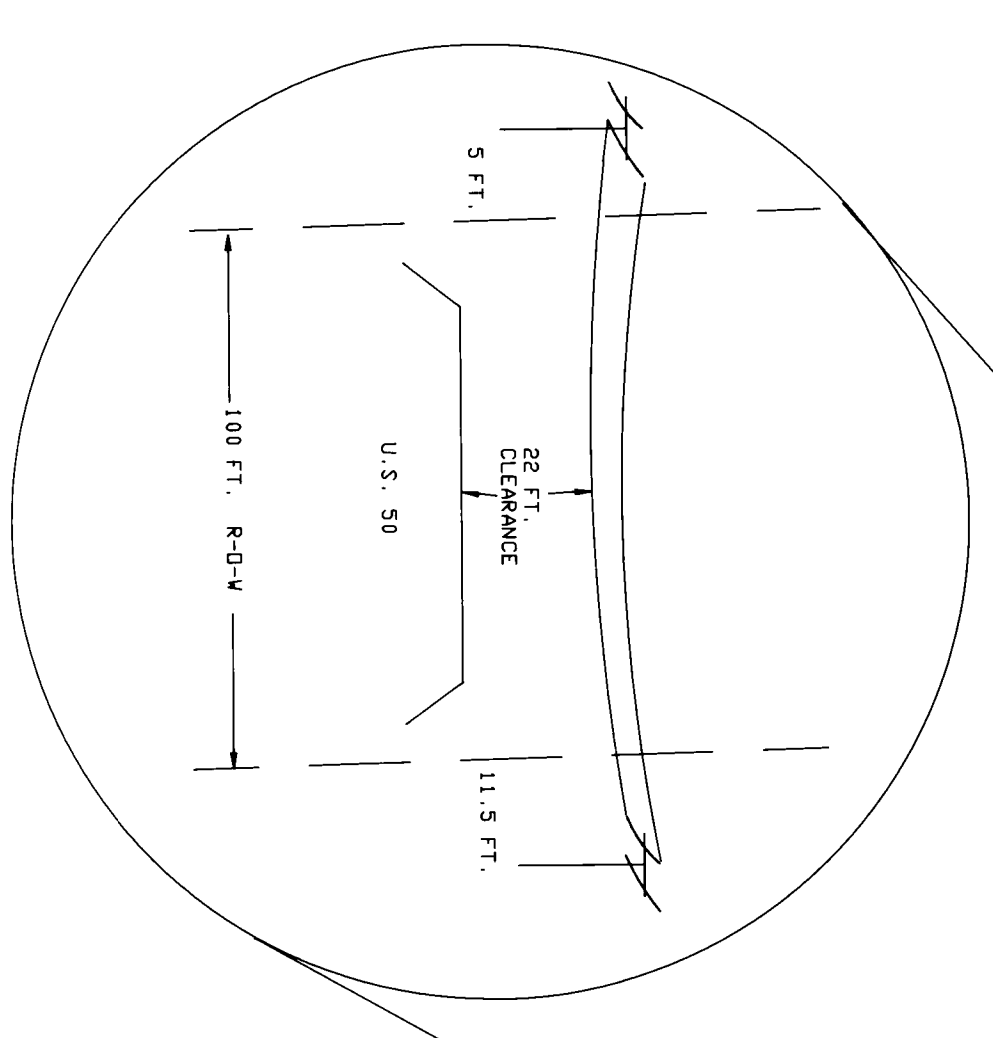
SURVEYOR'S CERTIFICATE

I, DAVID E. PROVOST, BEING A PROFESSIONAL LAND SURVEYOR IN THE  
 STATE OF NEVADA, DO HEREBY CERTIFY THAT THIS MAP, PLAN AND  
 ADOPTIVE REPRESENTATION OF A SURVEY MADE BY ME ON OCTOBER 24, 1995.

David E. Provost  
 DAVID E. PROVOST, PLS  
 NEVADA No. 11190  
 DATE 11-29



DETAIL-ND SCALE



BASIS OF BEARING:  
 MILL SITE  
 SURVEY No. 91

SCALE: 1=50

DATE	REVISIONS AND PURPOSE

MT. WHEELER POWER, Inc.	DATE: NOVEMBER 3, 1995
ELY, NEVADA 89301	
NEVADA 19 WHITE PINE	
BY: DEP	
FILED BY: PROVOST	
NO. BY: 45244	

COUNTY	TOWNSHIP	MAP NO.
NEVADA	T 19 N	J 6
STATE	RANGE	
EUREKA	R 53 E	

ELECTRICAL EASEMENT