

T.19 N., R.53 E., M.D.B. & M.

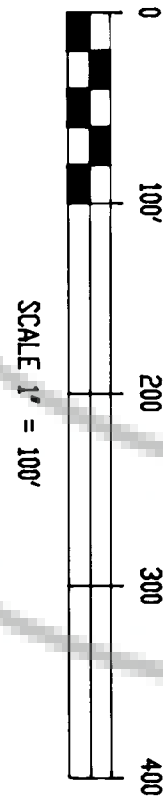
FILED AT THE REQUEST OF  
Donnelly & Thomas  
AT 12-4, 1995  
O'CLOCK AM  
FILES OF EUREKA  
COUNTY, NEVADA  
Recorder  
M. A. REBOLLEA  
Deputy  
Sharon J. Stewart  
File No. 160080

NOTES:

- FOUND, G.L.O. BRASS CAP, UNLESS OTHERWISE NOTED
- SET 5/8" REBAR WITH 1" CAP P.L.S. NO. 9392
- FOUND, 4"x 4" WOOD HIGHWAY MONUMENT POST
- RECORD = (S 74°17' W. 796.30')
- MEASURED = S. 74°37'25" W. 797.10'

SURVEYOR'S CERTIFICATE

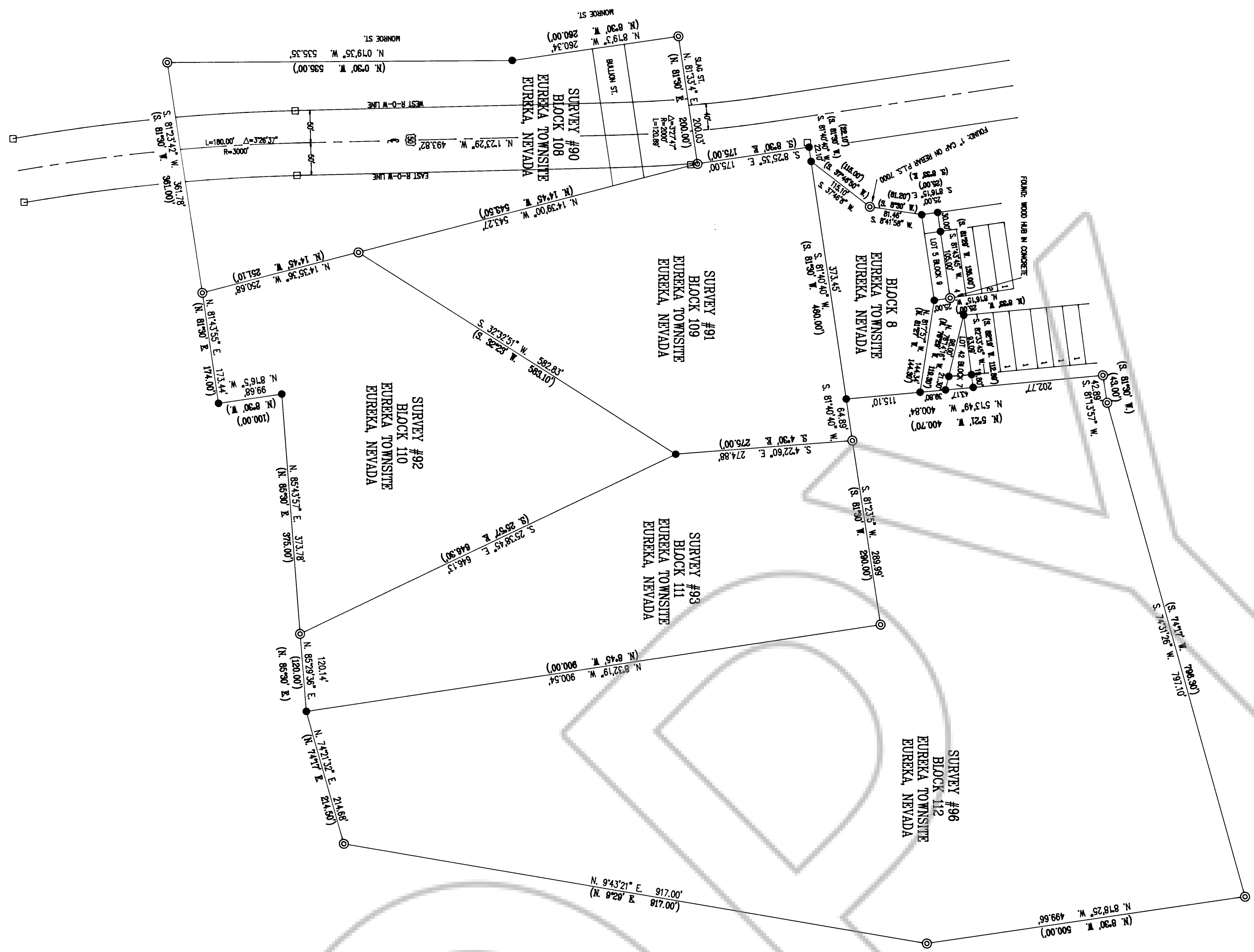
I, Dean Neubauer, a Professional Land Surveyor registered in the State of Nevada, certify that I have provided accurate representation of the lands surveyed under my supervision of the firm of Ruby Hill Mining Company.  
2. The lands surveyed lie within Section 24, T.19 N., R.53 E., M.D.B. & M. and the survey was completed on the 20th day of November, 1995.  
3. This plat complies with the applicable state statutes and any local ordinances.  
4. The monuments are of the character shown and occupy the positions indicated.  
Date 11-20-95  
Dean Neubauer  
Dean Neubauer, P.L.S.  
Nevada No. 5392



RECORD OF SURVEY

SHOWING  
LAND SURVEYED FOR  
RUBY HILL MINING COMPANY  
IN  
SECTION 24 T.19 N., R.53 E., M.D.B. & M.  
EUREKA COUNTY, NEVADA

BASIS OF BEARING  
BY  
SOLAR OBSERVATION



12-4-95  
160080  
1700

SURVEYED & MAPPED  
BODINBY & FORMAN, INC.  
RECORD, NEVADA  
NOVEMBER, 1995