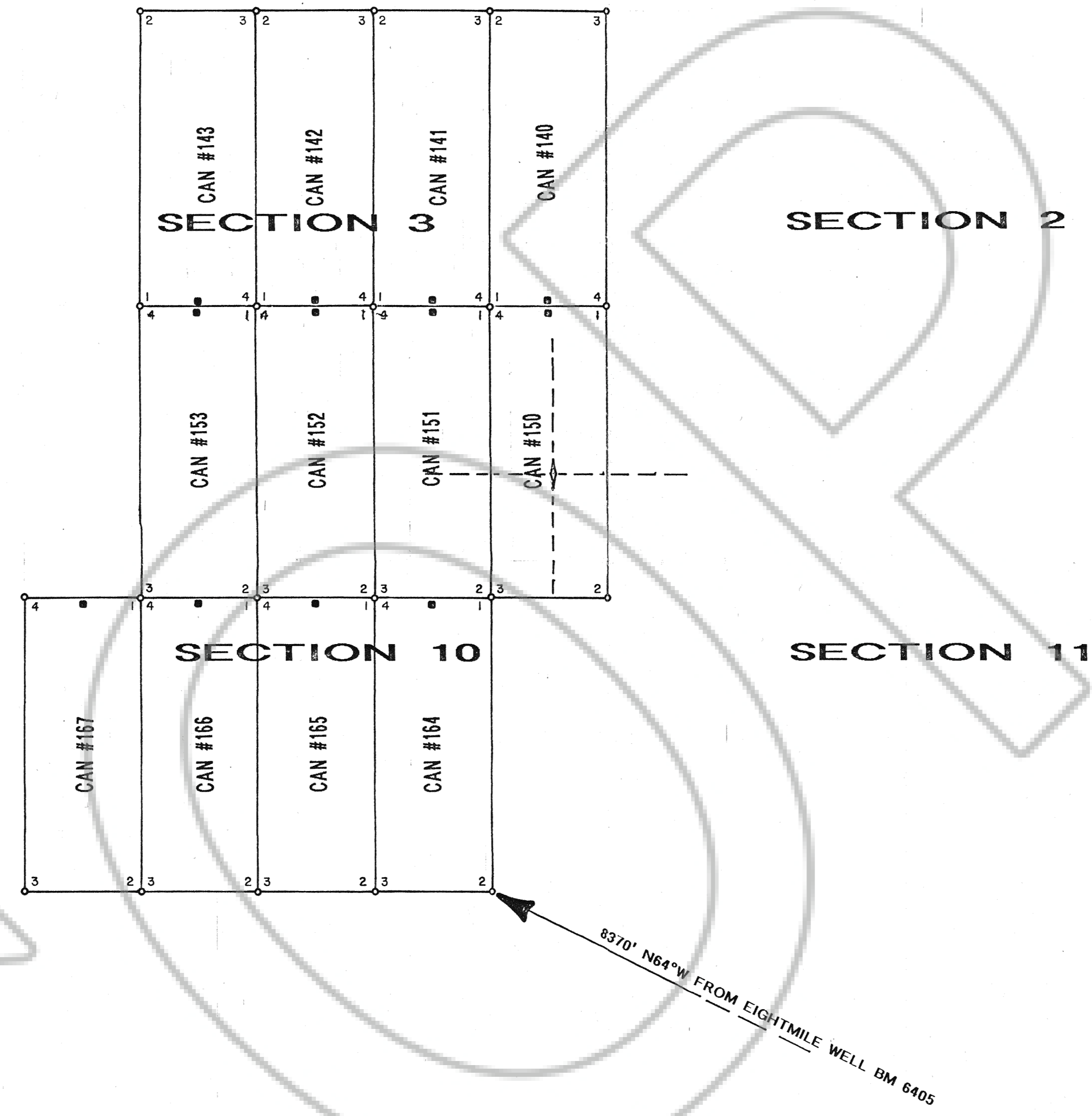


ALL CLAIMS ARE 1500' X 600'  
LOCATION MONUMENTS ARE  
10' INSIDE END LINES



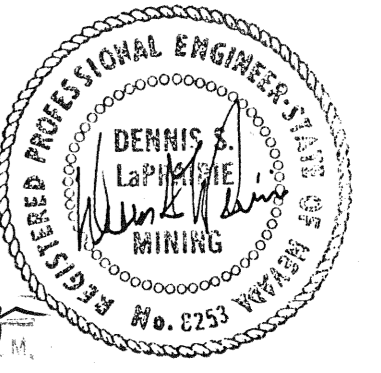
LOCATED BY: PANOS CANADIAN INVESTMENTS  
2525 SHARON WAY  
RENO NEVADA 89509

LOCATED ON: SEPTEMBER 16, 1995

LOCATED IN: SECTIONS 2,3,10&11  
T 15 N., R 52 E  
EUREKA CO., NEVADA

- LOCATION MONUMENTS
- BOUNDARY MONUMENTS

FILED AT THE REQUEST OF *Panos Canadian*  
on *Dec 14 1995*, at *32* mins, *17* P.M.  
RECORDS OF EUREKA COUNTY, NEVADA M. N. REBAK, Recorder  
File No: **160307** Fee \$ *180.00*



| PANOS CANADIAN INVESTMENTS<br>CLAIM MAP |             |                |
|---|-------------|----------------|
| SCALE 1"=500'                           | APPROVED BY | DRAWN BY D LaP |
| DATE OCT 2, 1995                        |             | REVISED        |
| CAN CLAIM GROUP                         |             |                |
| DENNIS S. LAPRAIRIE, AGENT              |             | DRAWING NUMBER |