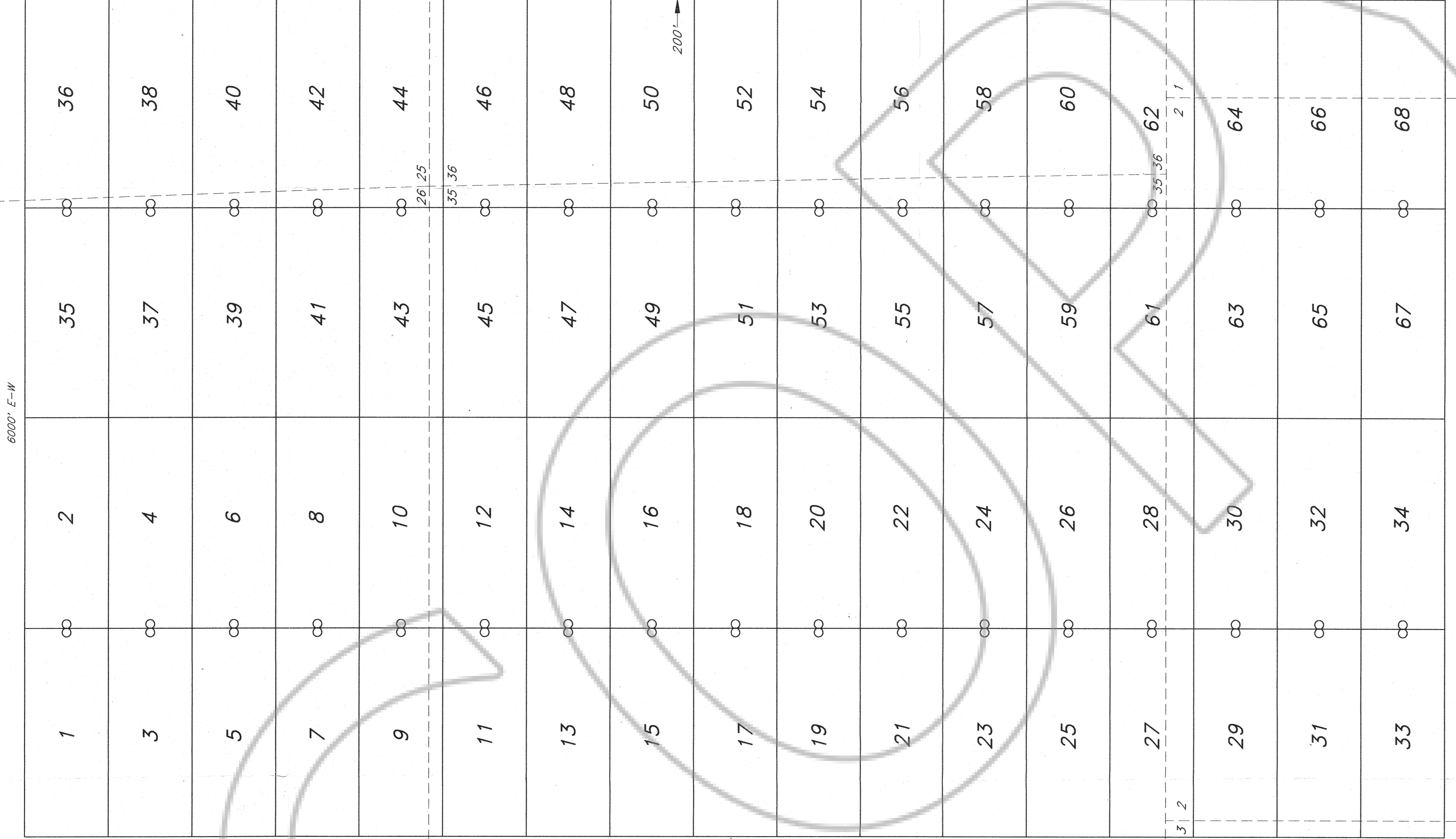


R 52 E



LOCATOR:

MINNOVA (U.S.) INC.
 1315 Greg Street, Suite 110
 Sparks, NV 89431

LOCATION:

Sections 1-3, T25N, R52E
 Sections 25, 26, 35, 36 T26N, R52E
 Mount Diablo Meridian, Eureka County, Nevada

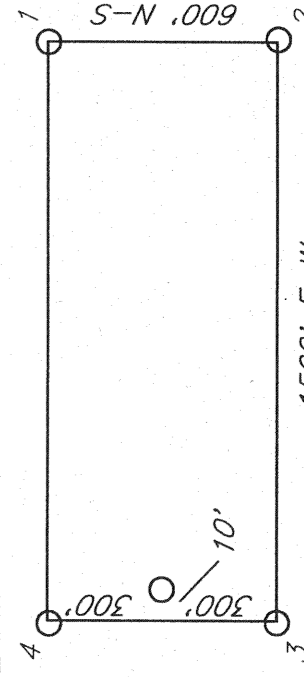
TIE POINT:

The NE corner of TEL 52 is 200' due West of the USBM 6912 located in the NW 1/4 of Section 36 T26N, R52E

NOTES:

All claims are 1500' x 600' with location monuments set 10' in from end lines.
 All monuments are 2"x2"x4" long wooden posts.
 Surveyed by: Big Creek Exploration Services

TYPICAL CLAIM:



Magnetic Declination 15.5'E

TEL 1-68

LODE MINING CLAIMS

MINNOVA (U.S.) INC.

Dec. 12, 1995 Located: Dec. 7 & 11, 1995 Drawn By: GH

Scale: 1"=500' Completed: Dec. 12, 1995 Revised:

Big Creek Exploration Services

FILED IN THE OFFICE OF
 THE CLERK OF THE DISTRICT COURT
 IN COUNTY OF EUREKA, STATE OF NEVADA
 ON Dec 26 1995 at 11:27 AM
 FILE NO. 160397 NEVADA M.N. REC. 35.00
 Fee \$ 220.00