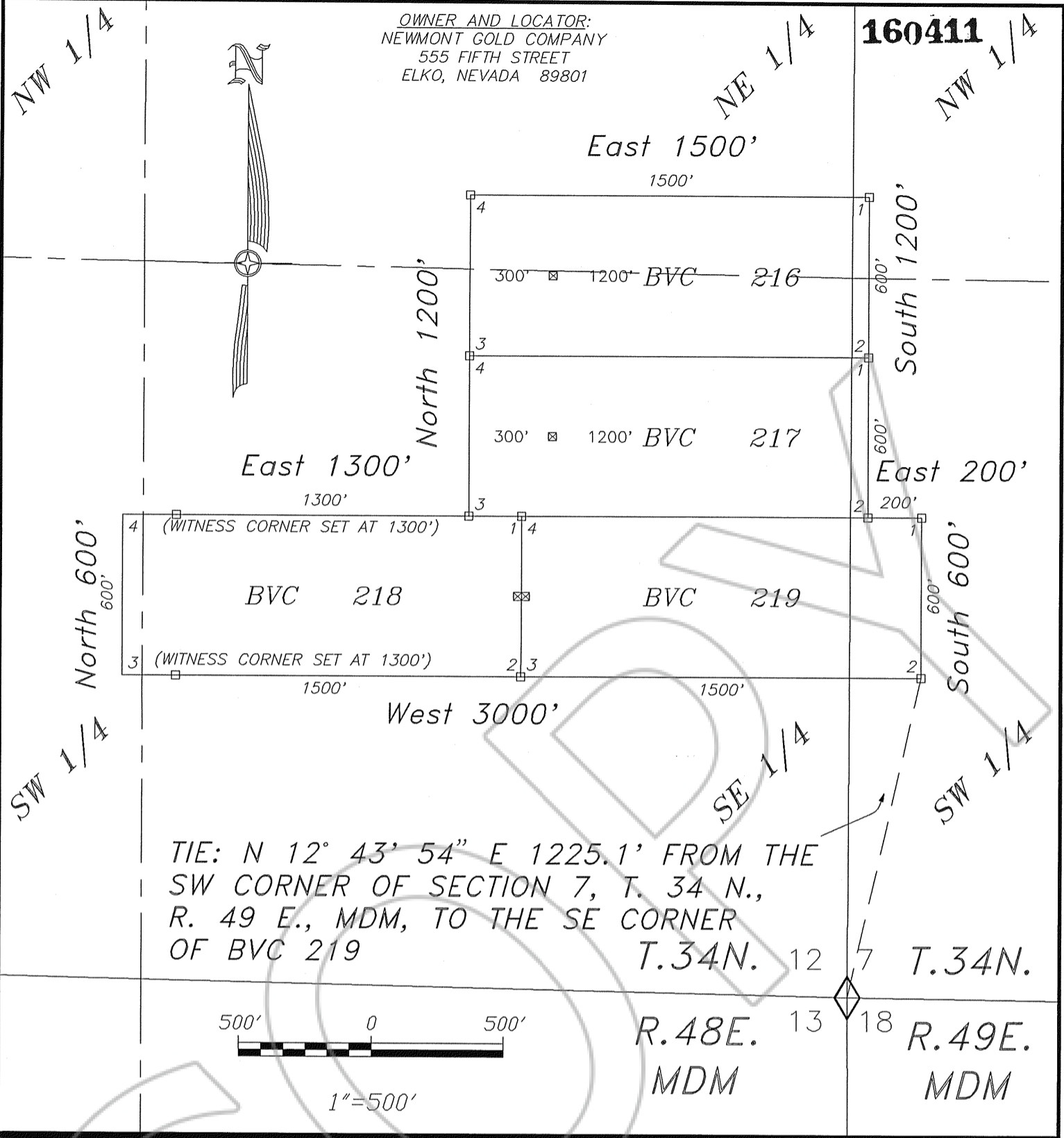
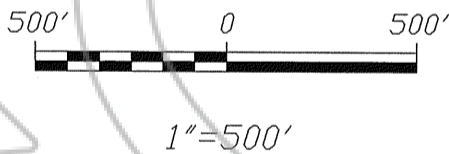


OWNER AND LOCATOR:
 NEWMONT GOLD COMPANY
 555 FIFTH STREET
 ELKO, NEVADA 89801

160411



TIE: N 12° 43' 54" E 1225.1' FROM THE
 SW CORNER OF SECTION 7, T. 34 N.,
 R. 49 E., MDM, TO THE SE CORNER
 OF BVC 219



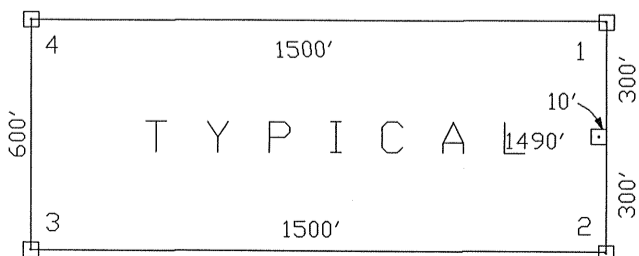
NOTES:

ALL CLAIMS ARE 1500' LONG BY 600' WIDE UNLESS OTHERWISE SHOWN
 LOCATION MONUMENTS ARE SET ON THE CENTERLINE OF EACH CLAIM,
 10 FEET FROM THE NEAR ENDLINE AND 1490 FEET FROM THE
 OPPOSITE ENDLINE UNLESS OTHERWISE SHOWN.

LEGEND:

- = 2" X 2" WOOD POST CLAIM CORNER
- ⊠ = 2" X 2" WOOD POST LOCATION MONUMENT
- ◇ = FOUND SECTION CORNER

FILED AT THE REQUEST OF Newmont Gold Co
 on Dec 27 1995, at 49 mins, past 1 P M,
 RECORDS OF EUREKA COUNTY, NEVADA M. N. REBALEATI, Recorder
 File No. **160411** Fee \$ 60.00



LOCATION MONUMENT MAY LIE AT EITHER END OF THE CLAIM

MAP
 OF
 BVC 216 - 219
 LODE MINING CLAIMS
 IN
 SECTION 12, T. 34 N., R. 48 E., MDM
 SECTION 7, T. 34 N., R. 49 E., MDM
 EUREKA COUNTY, NEVADA

NEWMONT GOLD COMPANY