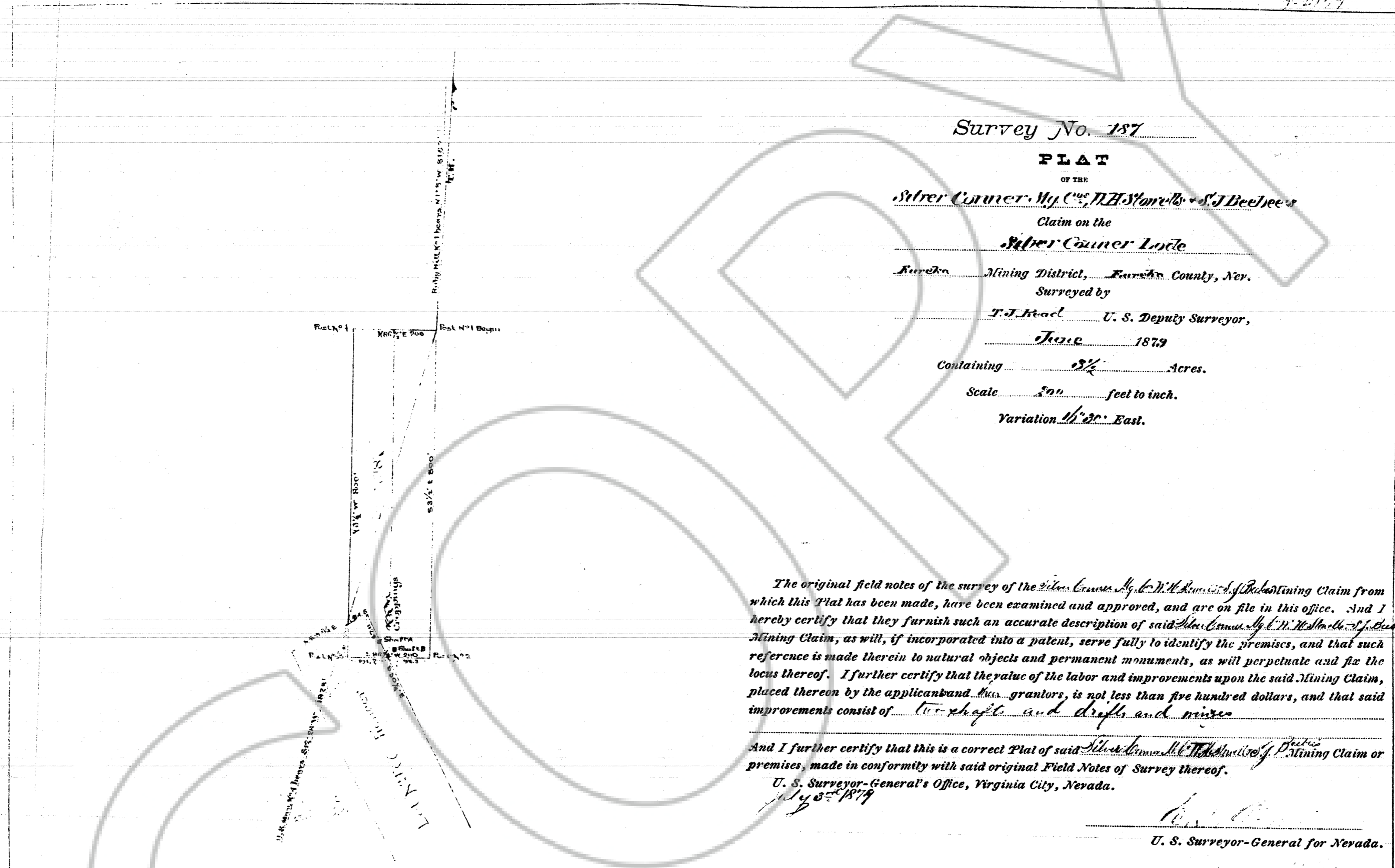


165497

165497



Survey No. 187

PLAT

OF THE

Silver Corner M. Co. N.B. Stone & S.J. Beecher

Claim on the

Silver Corner Lode

Eureka Mining District, Eureka County, Nev.

Surveyed by

T.J. Head U. S. Deputy Surveyor,

June 1879

Containing 3 1/2 Acres.

Scale 300 feet to inch.

Variation 16 3/4 East.

The original field notes of the survey of the Silver Corner M. Co. N.B. Stone & S.J. Beecher Mining Claim from which this Plat has been made, have been examined and approved, and are on file in this office. And I hereby certify that they furnish such an accurate description of said Silver Corner M. Co. N.B. Stone & S.J. Beecher Mining Claim, as will, if incorporated into a patent, serve fully to identify the premises, and that such reference is made therein to natural objects and permanent monuments, as will perpetuate and fix the locus thereof. I further certify that the value of the labor and improvements upon the said Mining Claim, placed thereon by the applicant and his grantors, is not less than five hundred dollars, and that said improvements consist of two shafts and drifts and mines

And I further certify that this is a correct Plat of said Silver Corner M. Co. N.B. Stone & S.J. Beecher Mining Claim or premises, made in conformity with said original Field Notes of Survey thereof.

U. S. Surveyor-General's Office, Virginia City, Nevada.

July 3rd 1879

U. S. Surveyor-General for Nevada.

20 440

FILED AT THE REQUEST OF United States (M)
 on 12/18 19 96 at 4 mins, past 11:45
 RECORDS OF EUREKA COUNTY, NEVADA M. N. REBALCATTI, Recorder
 File No. 165497 Fee \$ No Fee

DRAWING NUMBER
 # 165497
 Prepared by Mineral Survey
 SAFCO PRODUCTS • NEW HOPE, MINNESOTA
 RECORDER BY PART NUMBER 6551

DRAWING NUMBER
165497
 SAFCO PRODUCTS • NEW HOPE, MINNESOTA
 RECORDER BY PART NUMBER 6551

MINNESOTA