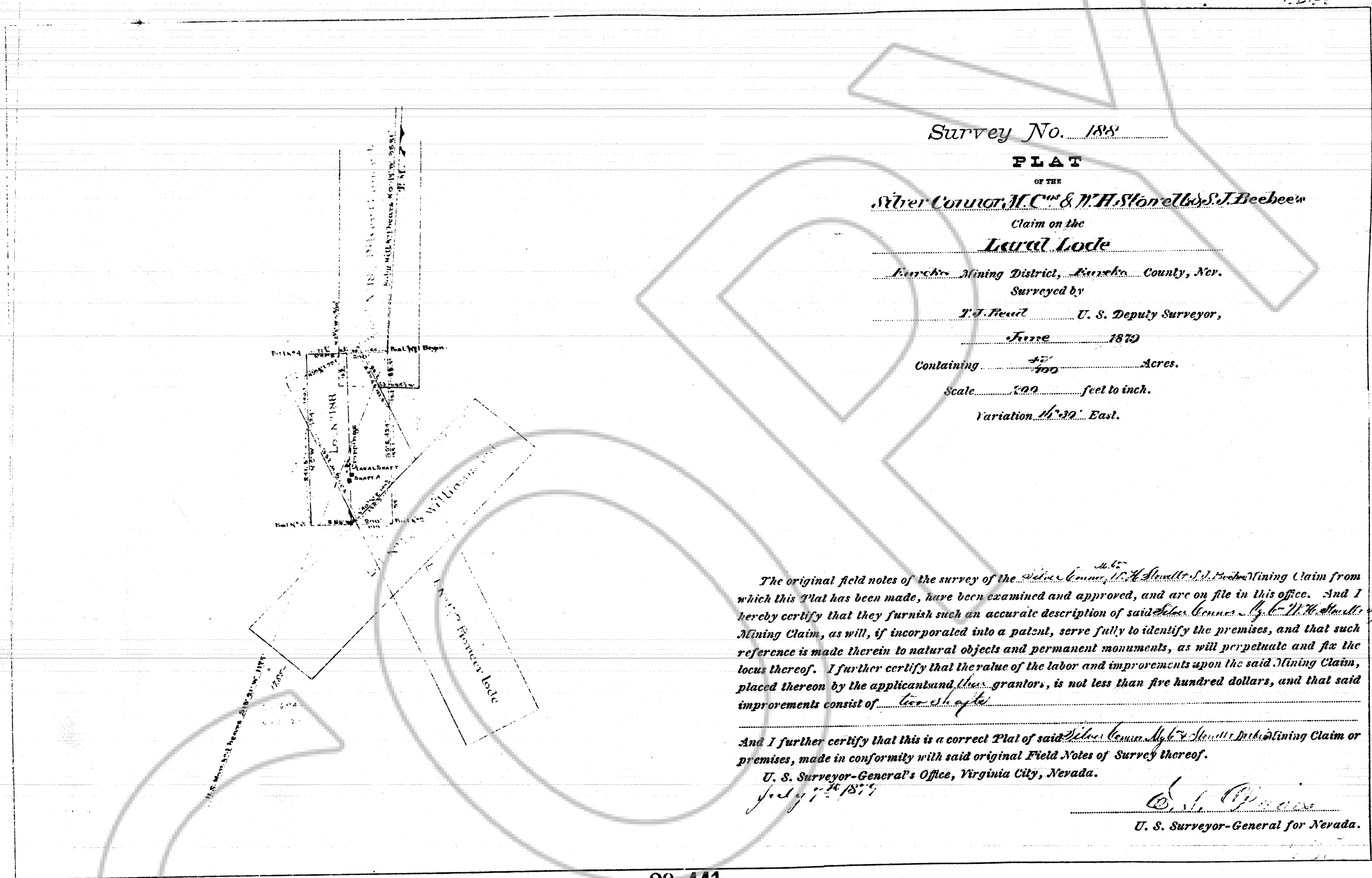


165498

DRAWING NUMBER
165498
SAFCO PRODUCTS • NEW HOPE, MINNESOTA
REORDER BY PART NUMBER 8551

DRAWING NUMBER
165498
SAFCO PRODUCTS • NEW HOPE, MINNESOTA
REORDER BY PART NUMBER 8551



Survey No. 188

PLAT
OF THE
Silver Corner, H.C. & N.H. Stone & S.J. Beebe's
Claim on the
Lured Lode
Eureka Mining District, Eureka County, Nev.
Surveyed by
T.J. Reed U. S. Deputy Surveyor,
June 1879
Containing 77/100 Acres.
Scale 200 feet to inch.
Variation 16° 32' East.

The original field notes of the survey of the Silver Corner, H.C. & N.H. Stone & S.J. Beebe's Mining Claim from which this Plat has been made, have been examined and approved, and are on file in this office. And I hereby certify that they furnish such an accurate description of said Silver Corner, H.C. & N.H. Stone & S.J. Beebe's Mining Claim, as will, if incorporated into a patent, serve fully to identify the premises, and that such reference is made therein to natural objects and permanent monuments, as will perpetuate and fix the locus thereof. I further certify that the value of the labor and improvements upon the said Mining Claim, placed thereon by the applicants and their grantors, is not less than five hundred dollars, and that said improvements consist of two shafts.

And I further certify that this is a correct Plat of said Silver Corner, H.C. & N.H. Stone & S.J. Beebe's Mining Claim or premises, made in conformity with said original Field Notes of Survey thereof.
U. S. Surveyor-General's Office, Virginia City, Nevada.
July 1st 1879
W. S. P. [Signature]
U. S. Surveyor-General for Nevada.

20 441

FILED AT THE REQUEST OF United States (A.M.)
on 12/18 19 96, at 8 mins. past 11 A.M.
RECORDS OF EUREKA COUNTY, NEVADA M. N. REBALEATI, Recorder
File No. 165498 Fee \$ 20.32