

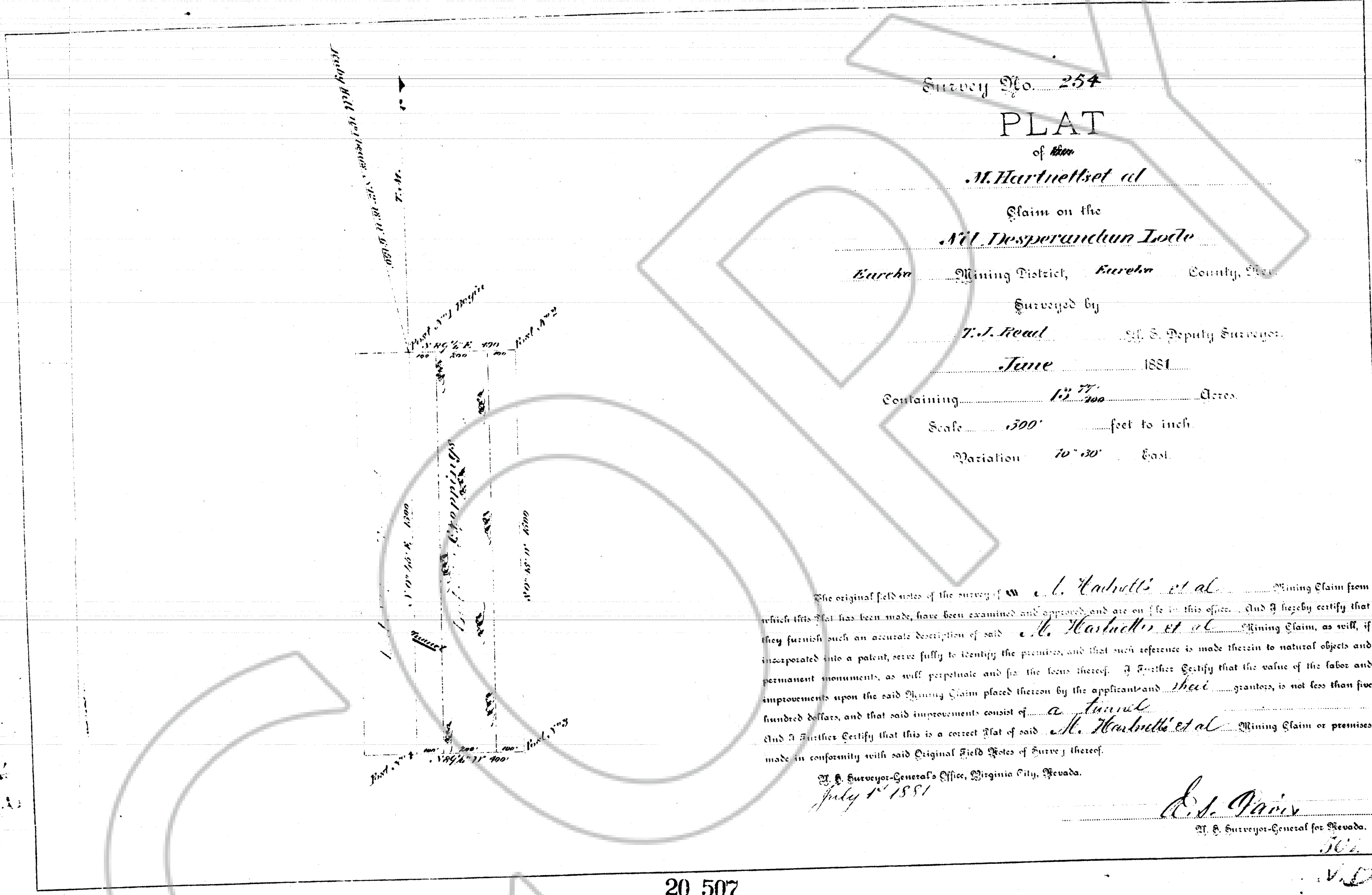
D
BARCO PPI

DRAWING NUMBER
#254
SAFCO PRODUCTS • NEW HOPE, MINNESOTA
REORDER BY PART NUMBER 6654

DRAWING NUMBER
165505
SAFCO PRODUCTS • NEW HOPE, MINNESOTA
REORDER BY PART NUMBER 6654

165505

9# 1991



Survey No. 254
PLAT
 of *them*
M. Hartnett et al

Claim on the
M. Desperandian Lode
 Eureka Mining District, Eureka County, Nev.

Surveyed by
T. J. Reul S. Deputy Surveyor

June 1881

Containing 13.77 Acres

Scale 500 feet to inch

Variation 10° 30' East

The original field notes of the survey of *M. Cabrelli et al* Mining Claim from which this Plat has been made, have been examined and approved and are on file in this office. And I hereby certify that they furnish such an accurate description of said *M. Hartnett et al* Mining Claim, as will, if incorporated into a patent, serve fully to identify the premises, and that such reference is made therein to natural objects and permanent monuments, as will perpetuate and fix the locus thereof. I further certify that the value of the labor and improvements upon the said Mining Claim placed thereon by the applicant and *their* grantors, is not less than five hundred dollars, and that said improvements consist of *a tunnel*. And I further certify that this is a correct Plat of said *M. Hartnett et al* Mining Claim or premises, made in conformity with said Original Field Notes of Survey thereof.

T. J. Reul
 July 1st 1881
 Surveyor-General's Office, Virginia City, Nevada.

E. S. Davis
 Surveyor-General for Nevada.

20 507

FILED AT THE REQUEST OF *United States (Bum)*
 on *12/18* 19 *96*, at *12* mins, past *11 A* M,
 RECORDS OF EUREKA COUNTY, NEVADA M. N. REBALESI, Recorder
 File No. _____ Fee \$ _____

165505