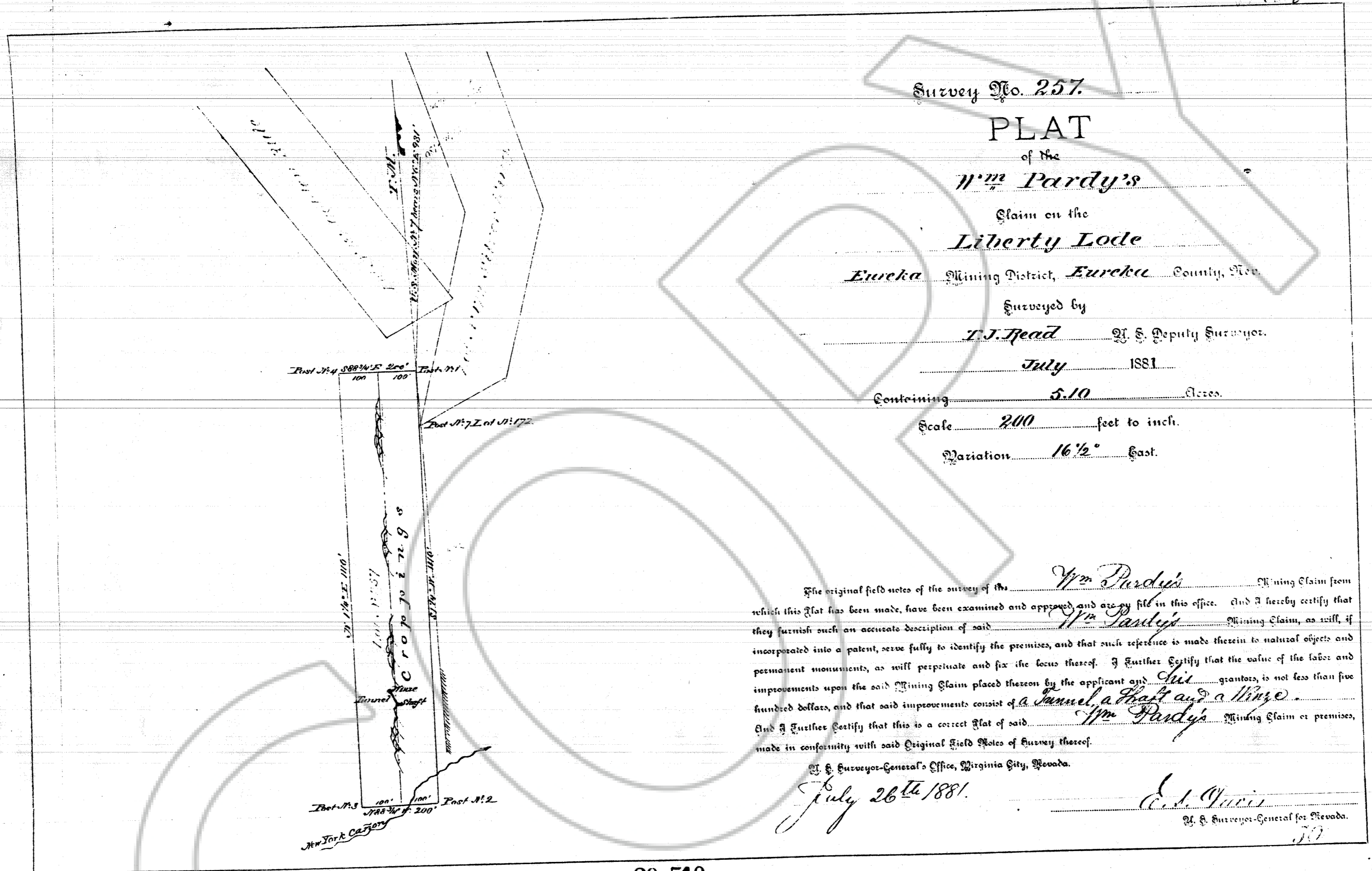


DRAWING NUMBER
257
Mineral Survey
SAFCO PRODUCTS • NEW HOPE, MINNESOTA
REGISTERED BY PART NUMBER 8551

DRAWING NUMBER
165507
SAFCO PRODUCTS • NEW HOPE, MINNESOTA
REGISTERED BY PART NUMBER 8551

165507

16570



The original field notes of the survey of the Wm Pardy's Mining Claim from which this Plat has been made, have been examined and approved and are on file in this office. And I hereby certify that they furnish such an accurate description of said Wm Pardy's Mining Claim, as will, if incorporated into a patent, serve fully to identify the premises, and that such reference is made therein to natural objects and permanent monuments, as will perpetuate and fix the locus thereof. I further certify that the value of the labor and improvements upon the said Mining Claim placed thereon by the applicant and his grantors, is not less than five hundred dollars, and that said improvements consist of a Tunnel, a Hoist and a Mine. And I further certify that this is a correct Plat of said Wm Pardy's Mining Claim or premises, made in conformity with said Original Field Notes of Survey thereof.

U. S. Surveyor-General's Office, Virginia City, Nevada.
July 26th 1881.
C. S. Quinn
U. S. Surveyor-General for Nevada.

20 510

FILED AT THE REQUEST OF United States (R.M.)
on 12/18 19 86, at 13 mins, P.M. 11 A.M.
RECORDS OF EUREKA COUNTY, NEVADA M. N. REBALEATI, Recorder
File No. 165507 Fee \$ 0