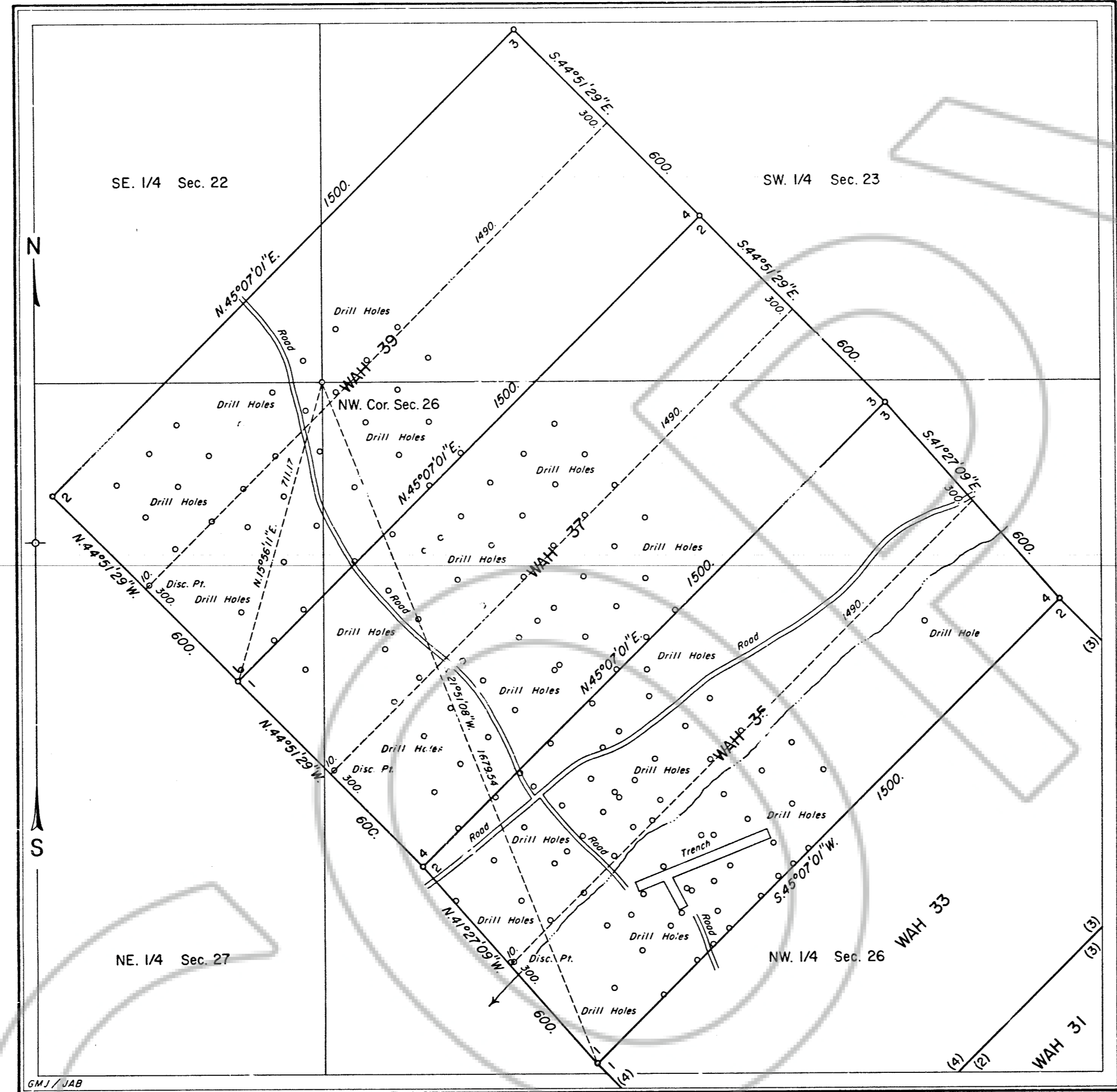


DRAWING NUMBER  
MS# 5004  
2 of 2

DRAWING NUMBER  
165515



165515

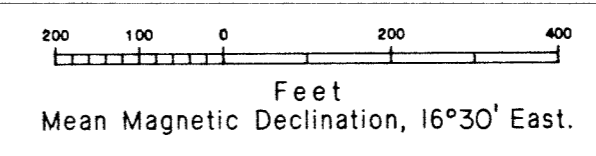
MINERAL SURVEY  
No. 5004  
NEVADA

Sheet No. 2 of 2 Sheets  
CLAIM OF  
ATLAS PRECIOUS METALS, INC.

KNOWN AS THE  
WAH 29, WAH 31, WAH 33, WAH 35,  
WAH 37 and WAH 39 LODES

SITUATE IN  
Secs. 22, 23, 26 & 27, T.22 N., R.49 E., M.D.M.  
EUREKA COUNTY  
Unknown Mining District

Lat. 39°45'03"N., Long. 116°26'25"W.  
at Cor. No. 2, WAH 39 Lode



Surveyed, April 2 to April 5, 1985,  
By James H. Luke, Mineral Surveyor.

UNITED STATES DEPARTMENT OF THE INTERIOR  
BUREAU OF LAND MANAGEMENT

Reno, Nevada February 3, 1986

I hereby certify that this plat of Mineral  
Survey No. 5004, Nevada, is strictly conformable  
to the field notes of said survey which have been  
examined and approved.

*Lacl E. Bland*  
Chief, Branch of Cadastral Survey

5004

FILED AT THE REQUEST OF *United States (BLM)*  
on *12/18* 19 *96* at *52* mins, part # *1* M.  
RECORDS OF EUREKA COUNTY, NEVADA M. N. REBALEATI, Recorder  
File No. **165515** Fee \$ *4*