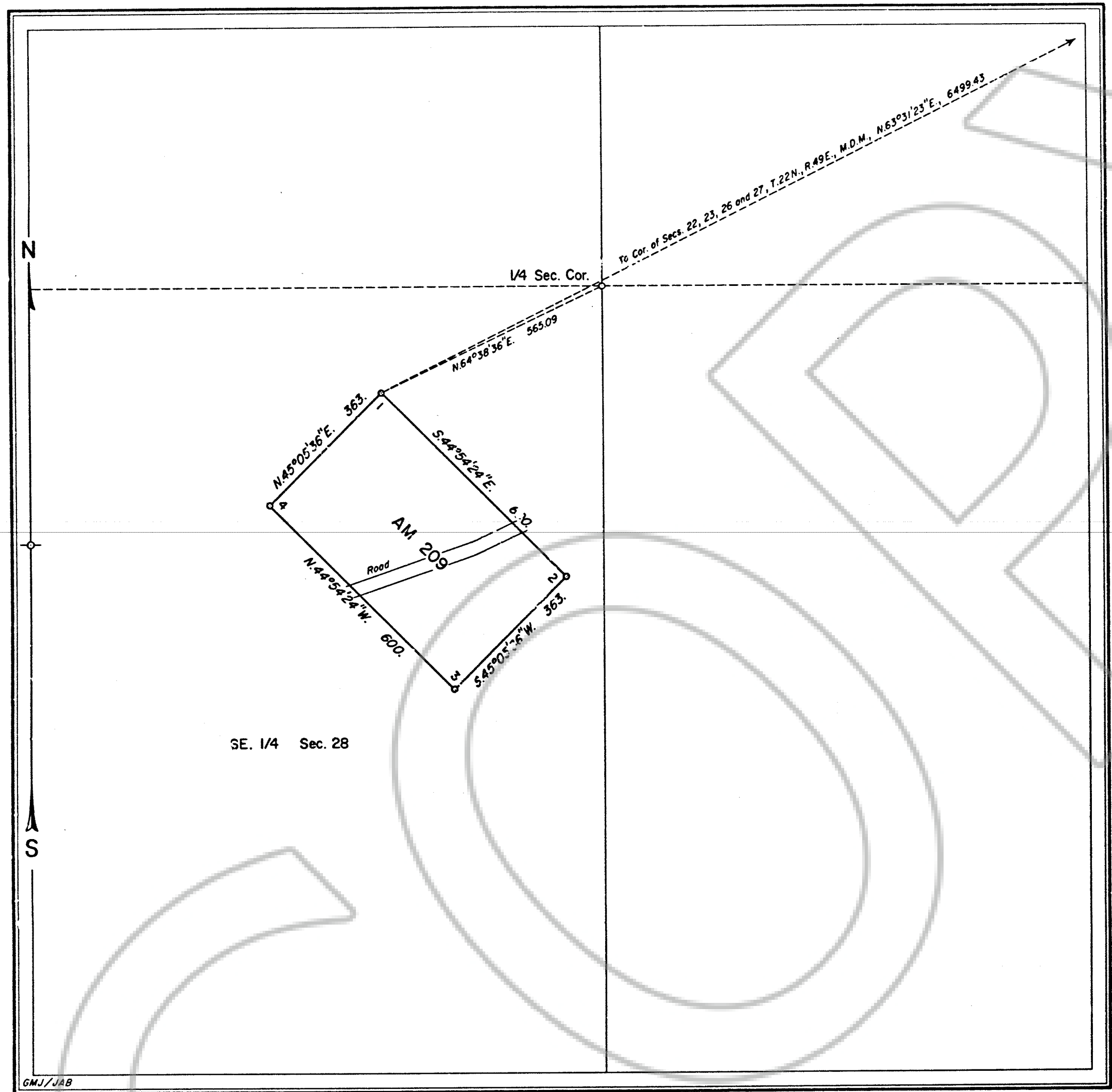


DRAWING NUMBER
MS# 5007

DRAWING NUMBER
165519

165519



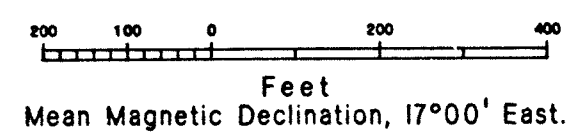
MINERAL SURVEY
No. 5007
NEVADA

CLAIM OF
ATLAS PRECIOUS METALS, INC.

KNOWN AS THE
AM 209 Millsite

SITUATE IN
Sec. 28, T. 22 N., R. 49 E., M.D.M.
EUREKA COUNTY
Unknown Mining District

Lat. 39°44'38"N., Long. 116°27'32"W.,
at Cor. No. 1, AM 209 Millsite



Surveyed, August 21 to August 22, 1985,
By William F. Mueller, Mineral Surveyor.

UNITED STATES DEPARTMENT OF THE INTERIOR
BUREAU OF LAND MANAGEMENT

Reno, Nevada February 7, 1986

I hereby certify that this plat of Mineral
Survey No. 5007, Nevada, is strictly conformable
to the field notes of said survey which have been
examined and approved.

Lael E. Bland

Chief, Branch of Cadastral Survey

5007

FILED AT THE REQUEST OF *United States (BLM)*
on *12/18* 19 *86*, at *5.3* mins. past *11.4* M.
RECORDS of EUREKA COUNTY, NEVADA M. N. REBALEATI, Recorder
File No. **165519** Fee \$ *0*