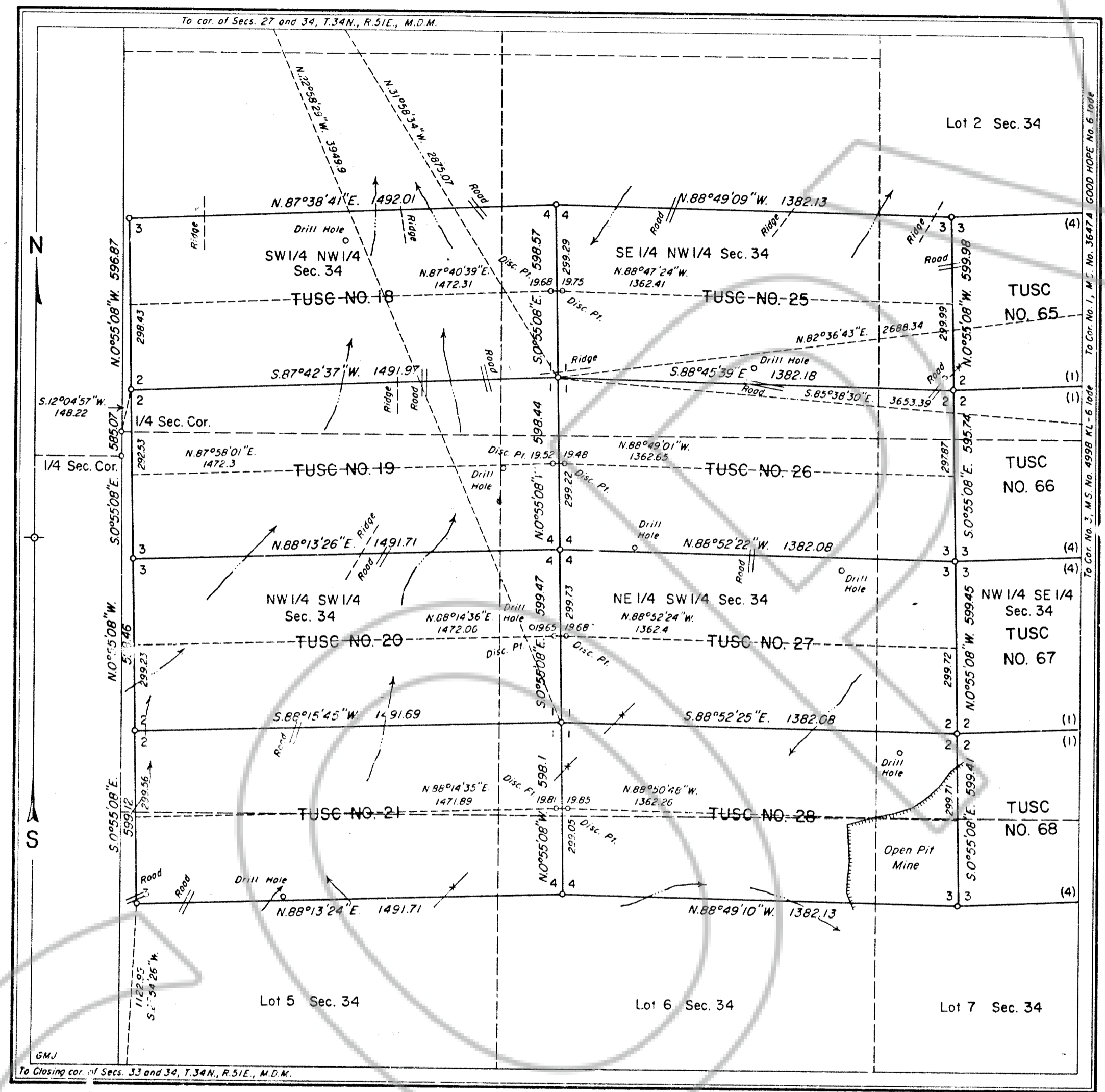


165526

MINERAL SURVEY No. 5046 NEVADA

Sheet No. 1 of 2 Sheets



5046

FILED AT THE REQUEST OF United States (BLM)
 on 12/18/96 at 45 mins, past 1 P.M.
 RECORDS OF EUREKA COUNTY, NEVADA M. N. REBALEATI, Recorder
 File No. 165526 Fee \$ 0

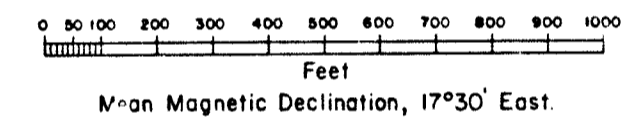
MINERAL SURVEY
No. 5046
NEVADA

Sheet No. 2 of 2 Sheets

CLAIM OF
NEWMONT GOLD COMPANY

KNOWN AS THE
TUSC No. 18 through TUSC No. 21,
TUSC No. 25 through TUSC No. 28 AND
TUSC No. 65 through TUSC No. 68 Lodes

SITUATE IN
Sec. 34, T.34N., R.51E., M.D.M.
EUREKA COUNTY
Maggie Creek Mining District
Lot. 40°47'29"N., Long. 116°14'13"W.,
at Cor. No. 2, TUSC No. 18 Lode

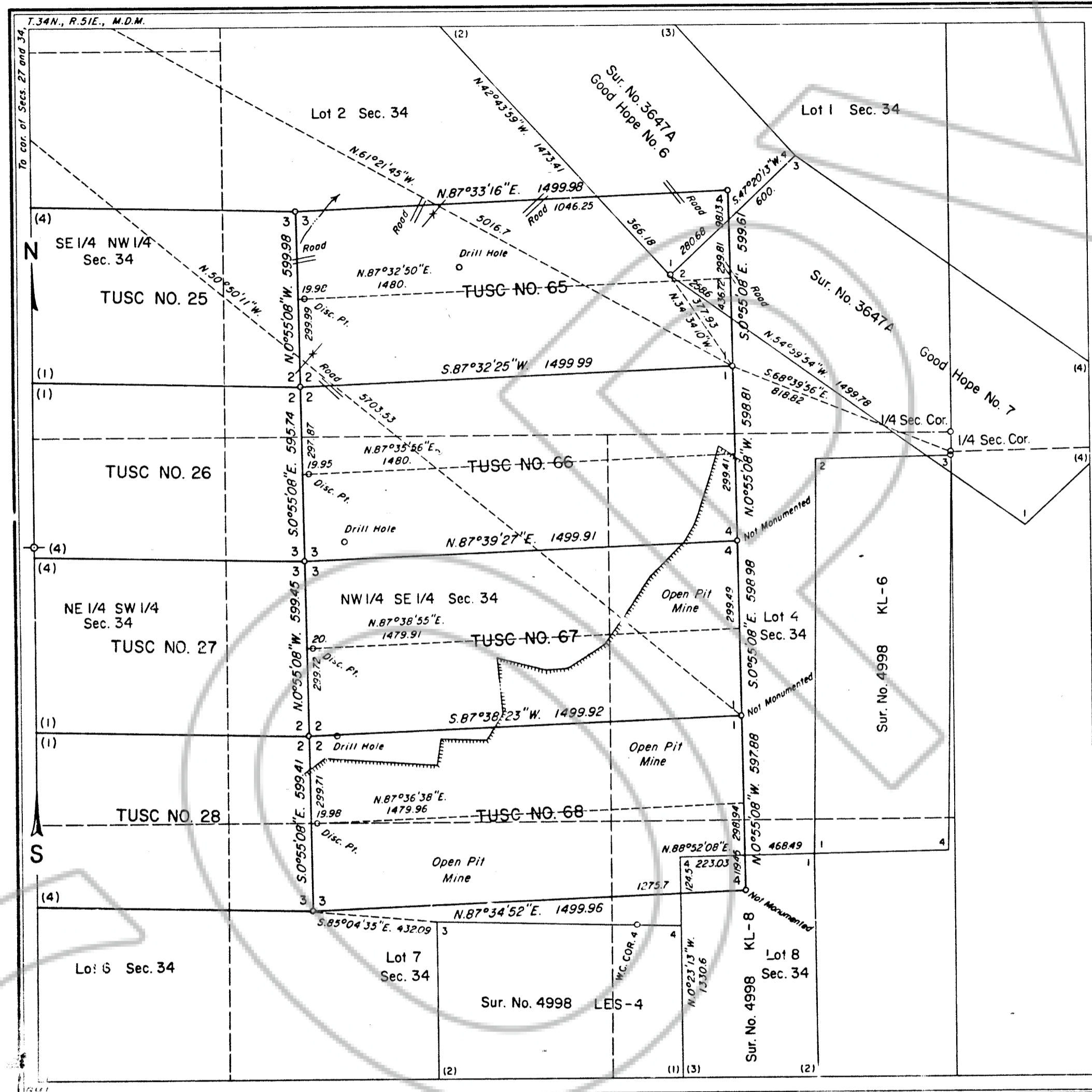


Surveyed, March 26 to April 18, 1990,
By William F. Mueller, Mineral Surveyor.

UNITED STATES DEPARTMENT OF THE INTERIOR
BUREAU OF LAND MANAGEMENT

Reno, Nevada, April 17, 1991
I hereby certify that this plot of Mineral Survey
No. 5046, Nevada, is strictly conformable to the field
notes of said survey which have been examined and
approved.

John S. Parish
Chief, Branch of Cadastral Survey



5046

FILED AT THE REQUEST OF *United States (Blm)*
on *12/18* 19*96*, at *35* mins, past *12* M.
RECORDS OF EUREKA COUNTY, NEVADA M. N. RESALEATI
File No. **165526** Fee \$ *0*