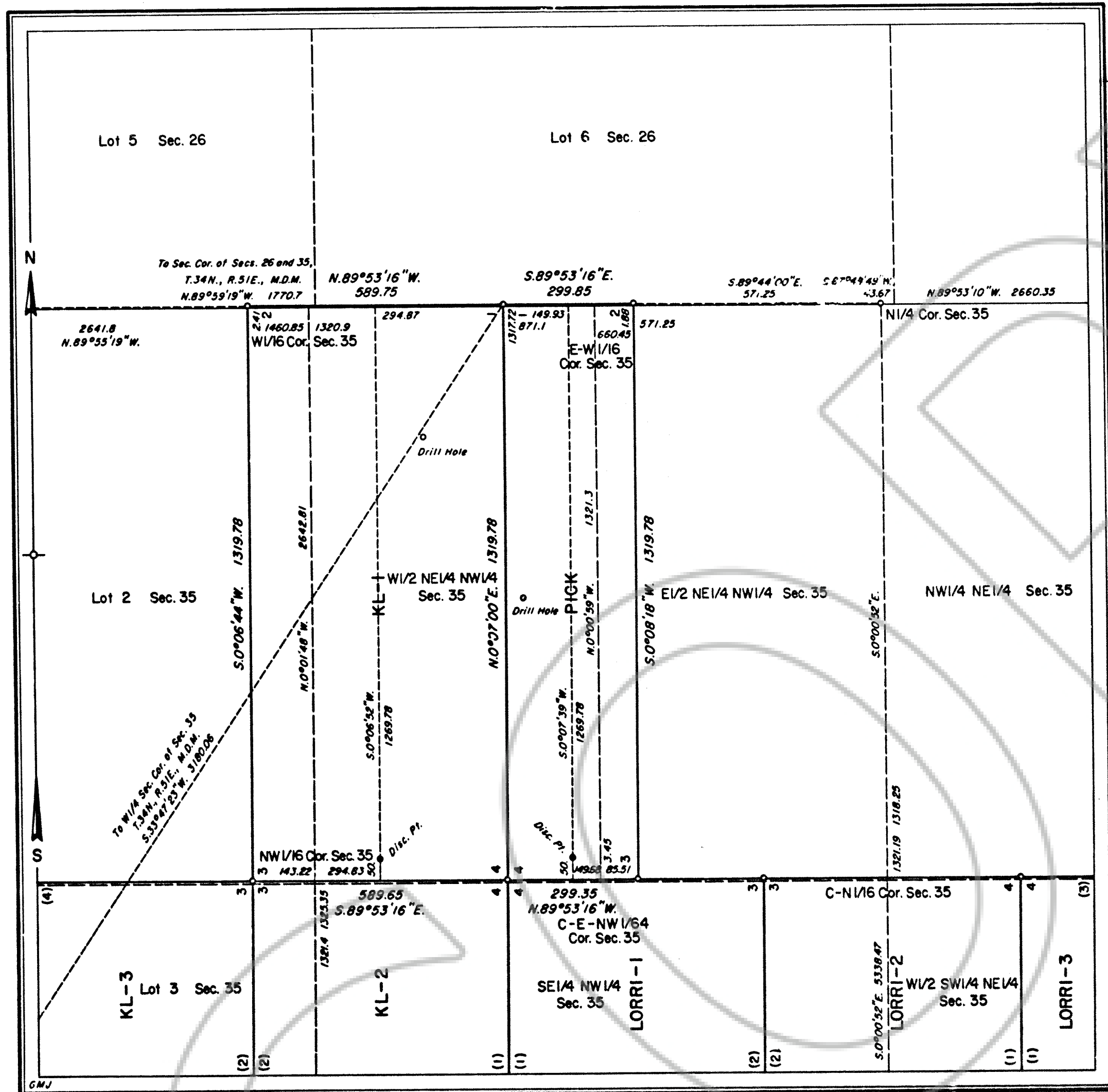


165528



MINERAL SURVEY  
No. 5050  
NEVADA

Sheet No. 1 of 4 Sheets

FILED AT THE REQUEST OF *United States (U.S.)*  
on *12/18* 19 *96*, at *47* mins. past *1* P.M.  
at EUREKA COUNTY, NEVADA M. N. RESALEATI Recorder  
Fee \$ *0*

165528

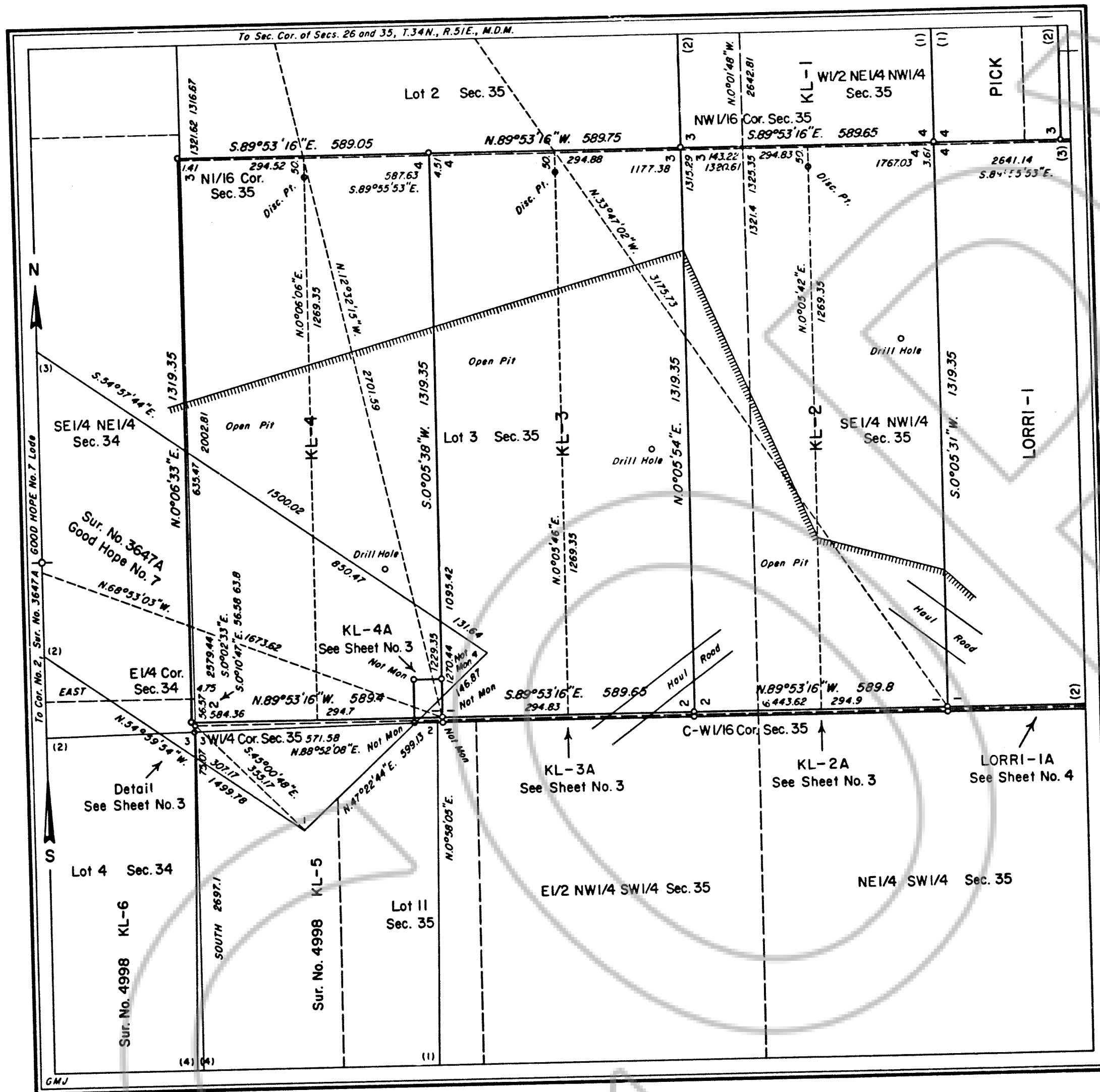
5050

165528

NS # 5050  
481



165528



MINERAL SURVEY  
No. 5050  
NEVADA

Sheet No. 2 of 4 Sheets

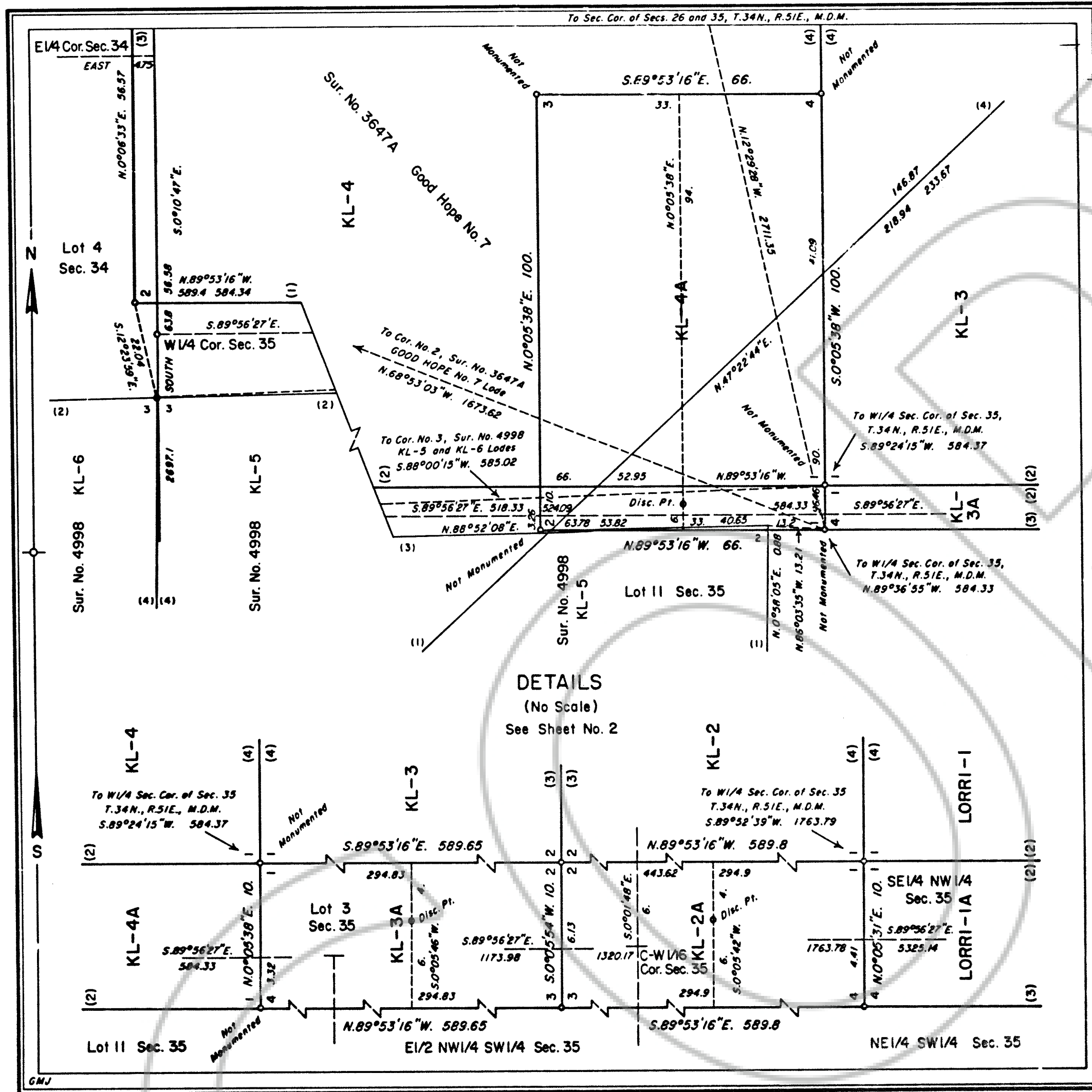
FILED AT THE REQUEST OF *United States (B-4)*  
on 12/18 19 96, at 45 minutes past 1 P.M.  
RECORDS OF EUREKA COUNTY, NEVADA. M. N. RUBLEAU, Recorder  
File No. 165528 Fee \$ 0

5050

165528

MS # 5050  
294

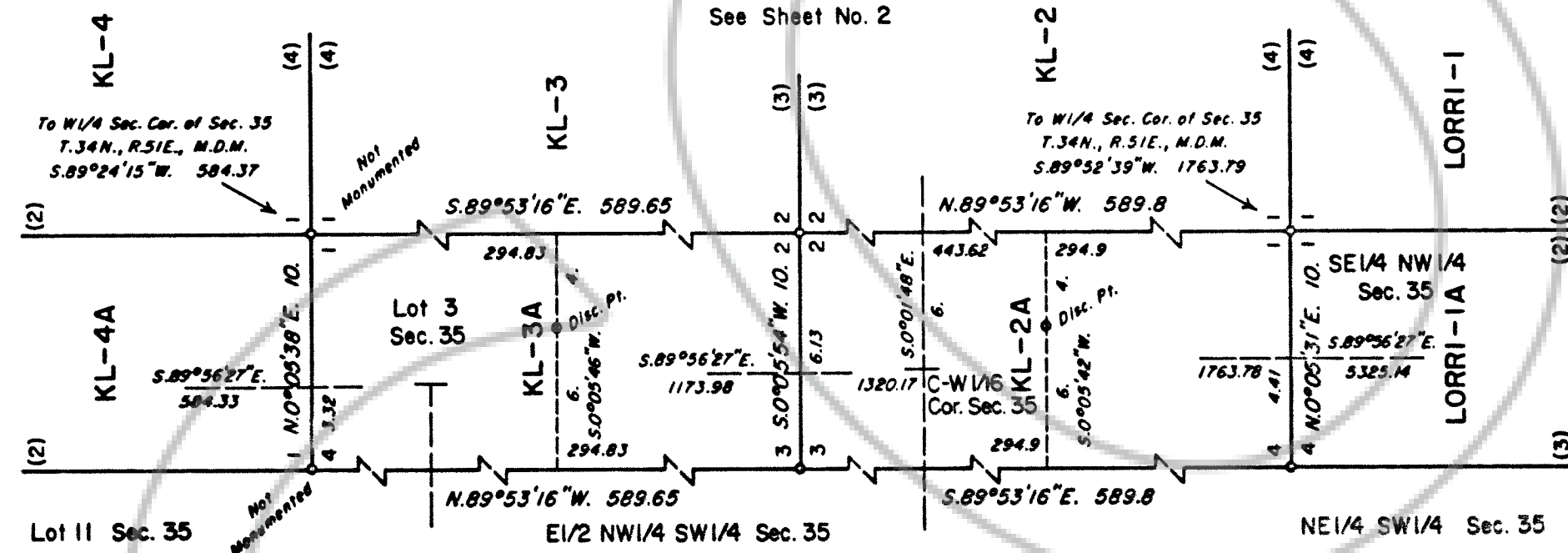




MINERAL SURVEY  
No. 5050  
NEVADA

Sheet No. 3 of 4 Sheets

DETAILS  
(No Scale)  
See Sheet No. 2



FILED AT THE REQUEST OF *United States (B.M.)*  
on 12/18/96  
RECORDS OF EUREKA COUNTY, NEVADA, M. H. RESARZAR, REGISTERED  
File No. 165509 Fee \$ 0

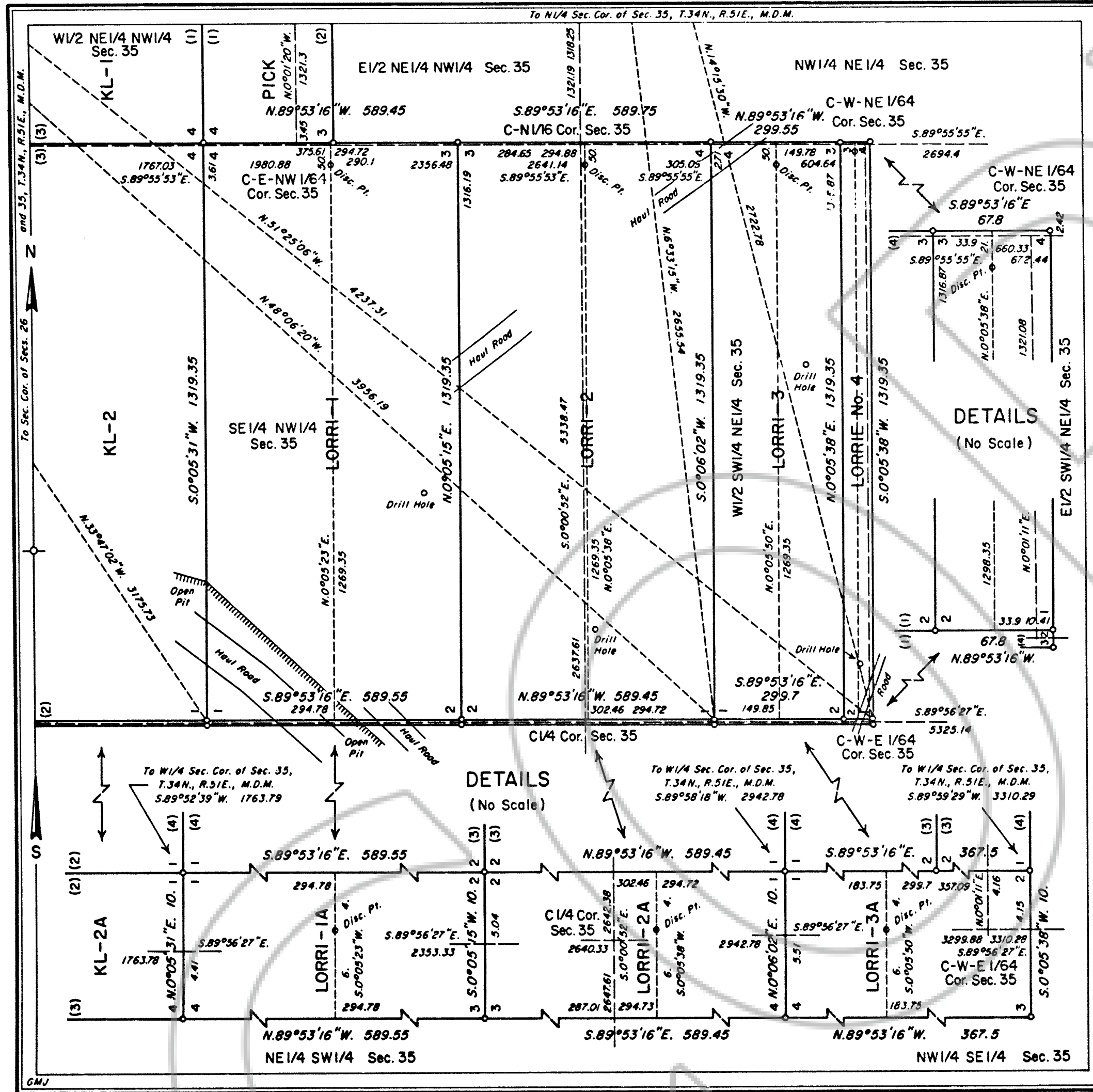
5050

165528

MS 5050  
384



165528



**MINERAL SURVEY  
No. 5050  
NEVADA**

Sheet No. 4 of 4 Sheets

CLAIM OF  
**NEWMONT GOLD COMPANY**

KNOWN AS THE  
KL-1 through KL-4, LORRI-1 through  
LORRI-3, LORRI-4, PICK, KL-2A  
through KL-4A, and LORRI-1A through  
LORRI-3A Lodes

SITUATE IN  
Secs. 26, 34 and 35, T.34N., R.51E., M.D.M.  
EUREKA COUNTY  
Maggie Creek Mining District  
Lat. 40°47'27"N., Long. 116°12'35"W.,  
at Cor. No. 2, LORRI-1 Lode



Mean Magnetic Declination, 17°30' East.

Surveyed, July 13 to July 27, 1990,  
By William F. Mueller, Mineral Surveyor.

UNITED STATES DEPARTMENT OF THE INTERIOR  
BUREAU OF LAND MANAGEMENT

Reno, Nevada, July 10, 1991

I hereby certify that this plat of Mineral Survey  
No. 5050, Nevada, is strictly conformable to the field  
notes of said survey which have been examined and  
approved.

*John S. Parrish*

Chief, Branch of Cadastral Survey

FILED AT THE REQUEST OF *United States (B.M.)* **5050**  
on *12/18* 19 *90*  
RECORDS OF EUREKA COUNTY, Nevada, at *47*  
File No. *165528*

165528

MS # 5050  
487