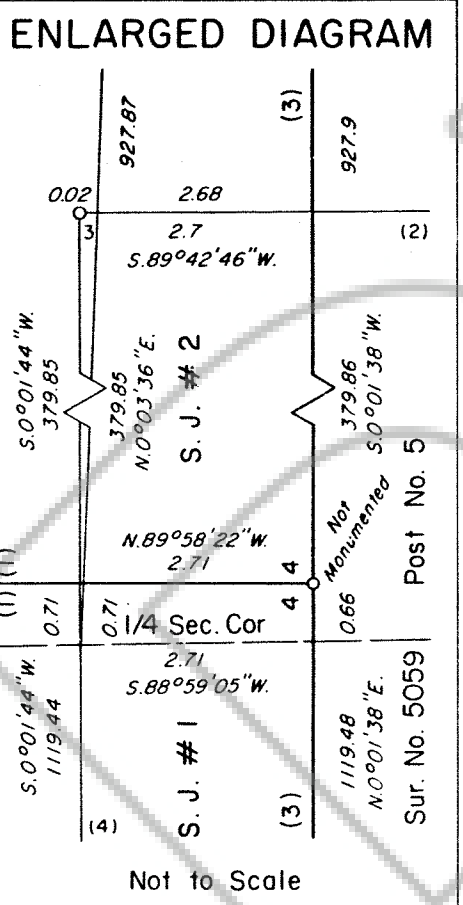
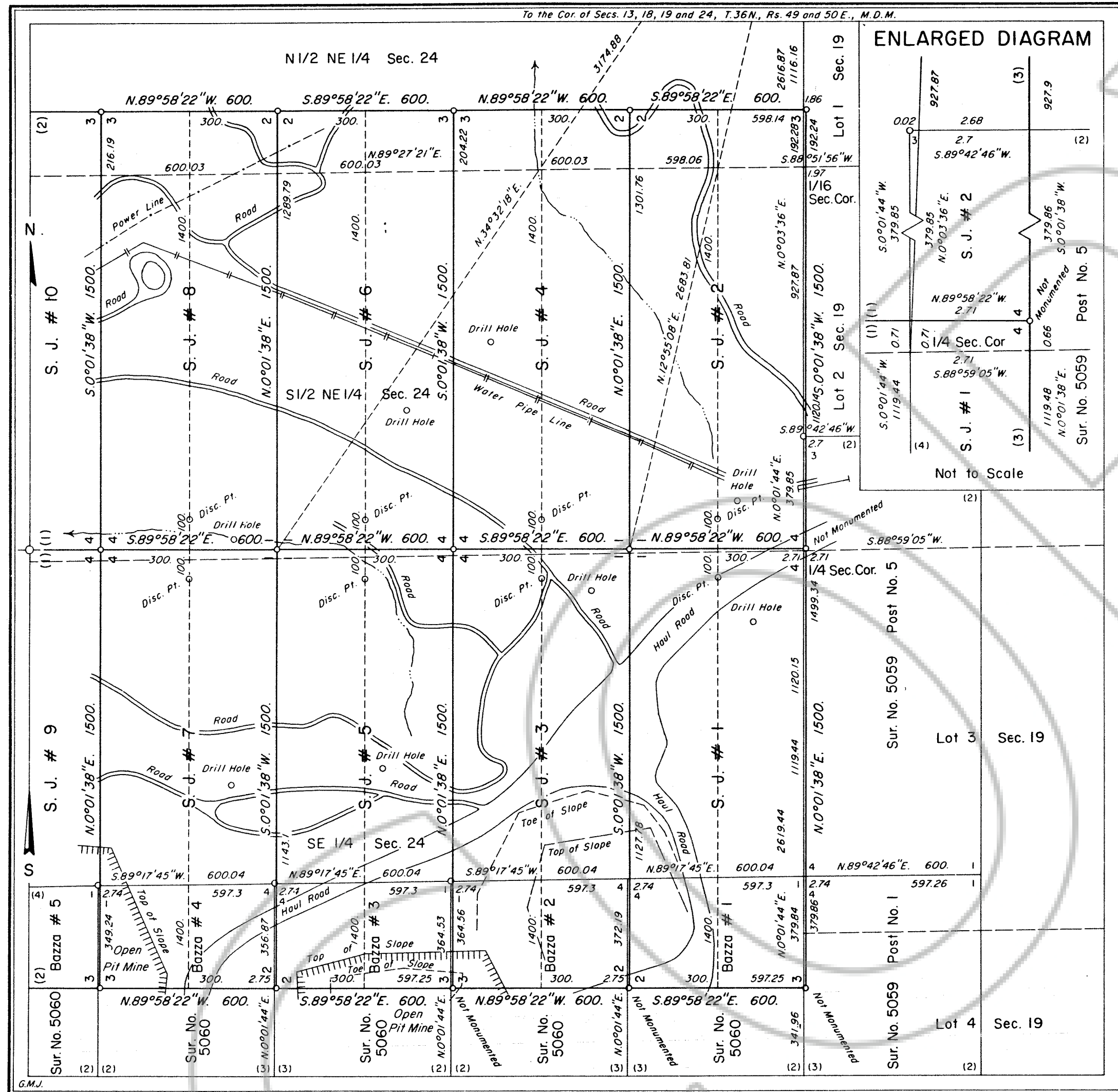


165532



**MINERAL SURVEY
No. 5061
NEVADA**

Sheet No. 1 of 2 Sheets

5061

FILED AT THE REQUEST OF *United States (BIM)*
 on *12/18* 19 *96*, at *57* mins, past *1 P.* M.
 RECORDS OF EUREKA COUNTY, NEVADA M. N. REBALEATI, Recorder
 Fee \$ *0*

165532

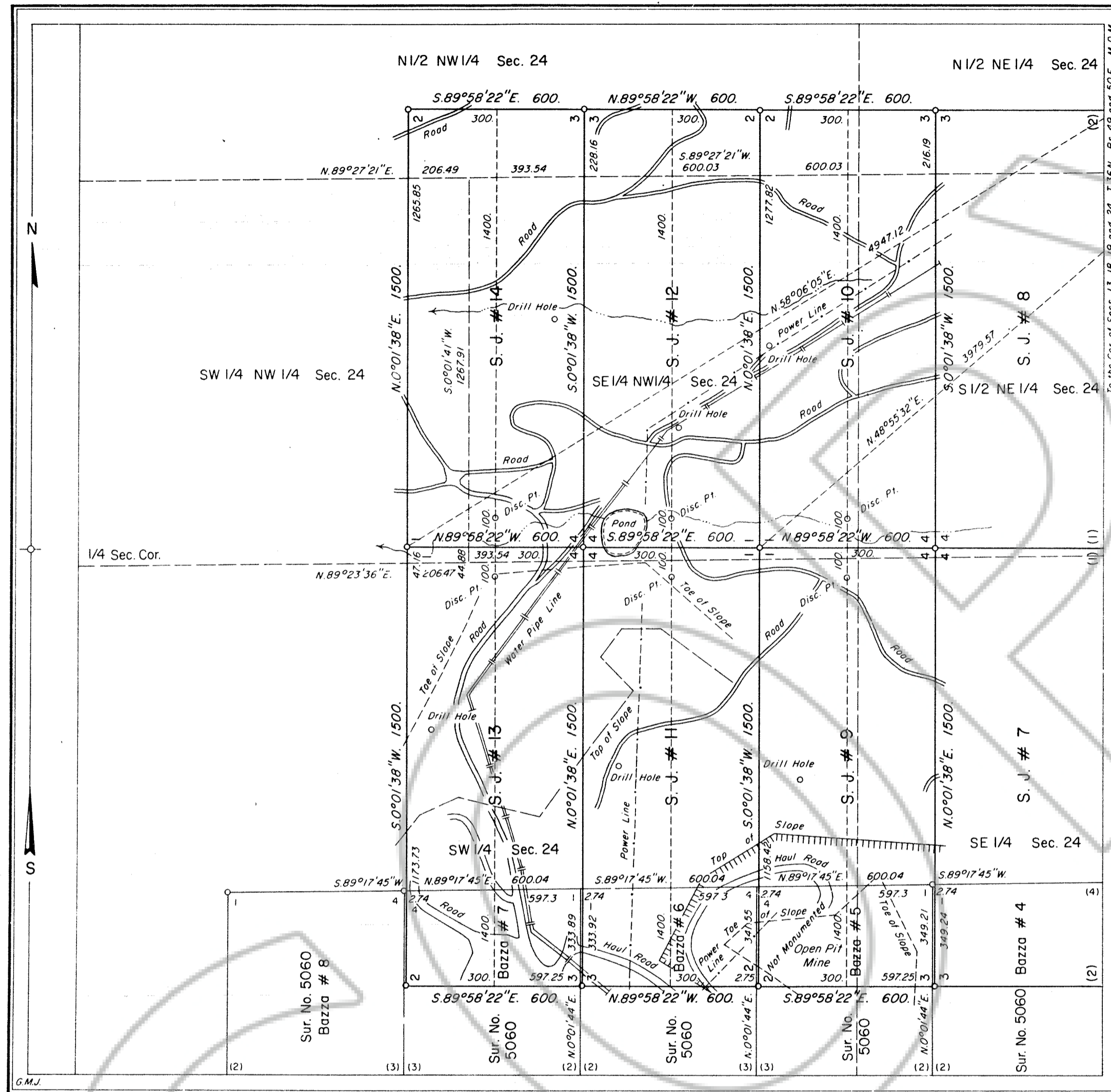
DRAWING NUMBER
165532

DRAWING NUMBER
MS # 5061
182

SAFECO PRODUCTS • NEVADA MINING DISTRICT
 REPRODUCED BY FIRST FILING ONLY

SAFECO PRODUCTS • NEVADA MINING DISTRICT
 REPRODUCED BY FIRST FILING ONLY

165532



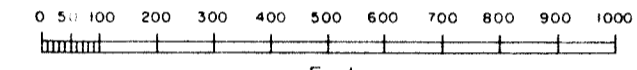
MINERAL SURVEY
No. 5061
NEVADA

Sheet No. 2 of 2 Sheets

CLAIM OF
BARRICK GOLDSTRIKE MINES, INC.

KNOWN AS THE
S. J. #1 through S. J. #14 Lodes

SITUATE IN
Sec. 24, T.36N., R.49E., and
Sec. 19, T.36N., R.50E., M.D.M.
EUREKA COUNTY
Lynn Mining District
Lat. 40°58'43"N., Long. 116°23'25"W.,
at Cor. No. 2, S. J. #13 Lode



Mean Magnetic Declination, 17°30' East

Surveyed, July 8 to Oct. 21, 1991,
By Don M. McHarg, Mineral Surveyor

UNITED STATES DEPARTMENT OF THE INTERIOR
BUREAU OF LAND MANAGEMENT

Reno, Nevada, February 20, 1992

I hereby certify that this plat of Mineral Survey
No. 5061, Nevada, is strictly conformable to the field
notes of said survey which have been examined and
approved.

John S. Parrish
Chief, Branch of Cadastral Survey

5061

FILED AT THE REQUEST OF *United States (BLM)*
on *12/18* 19 *96*, at *38* mins. past *11* P.M.
RECORDS OF EUREKA COUNTY, NEVADA M. N. REBALEATI, Recorder
File No. **165532** Fee \$ *0*

DRAWING NUMBER
165532

DRAWING NUMBER
MS # 5061
282