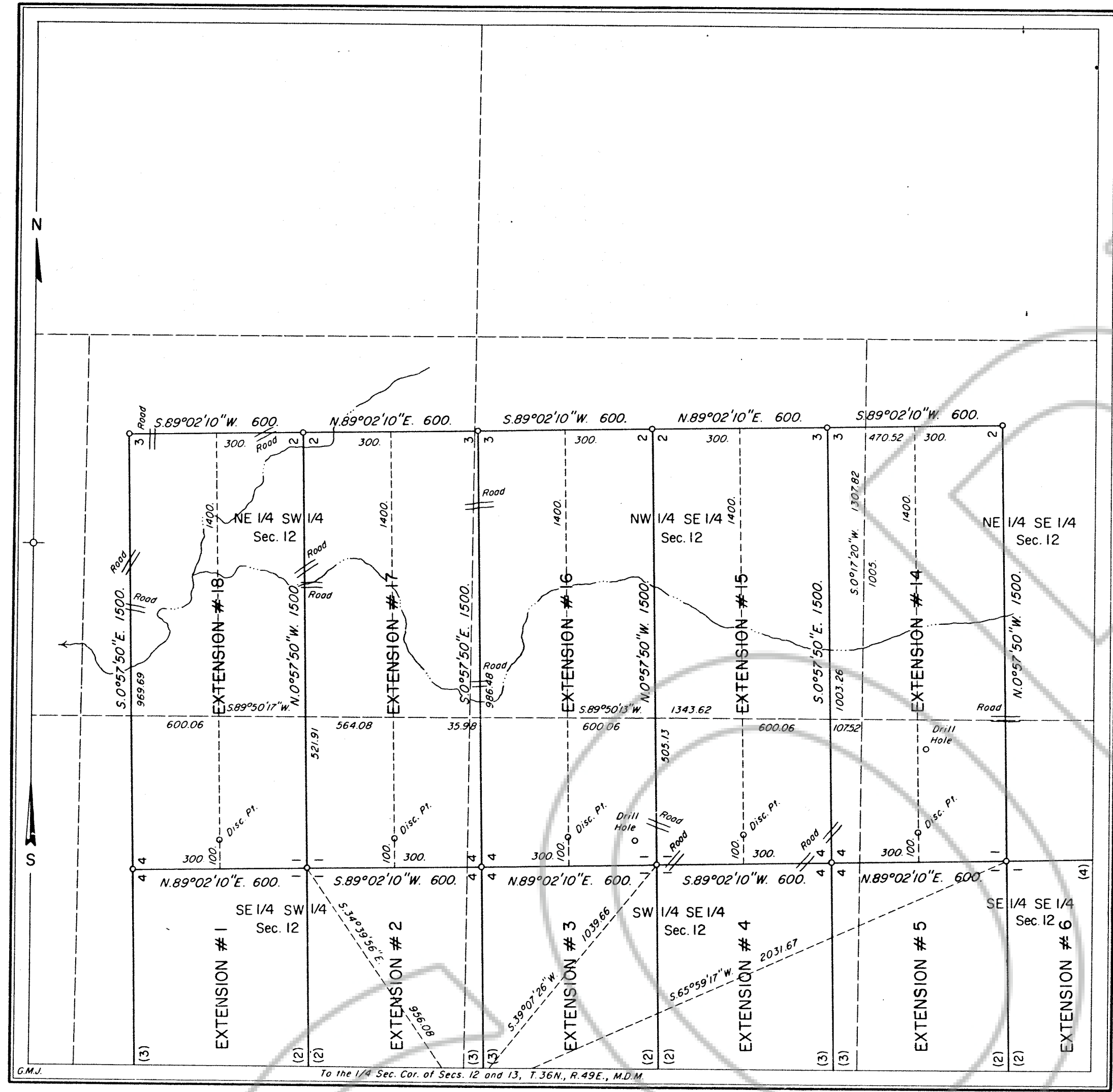


# MINERAL SURVEY No. 5065 NEVADA

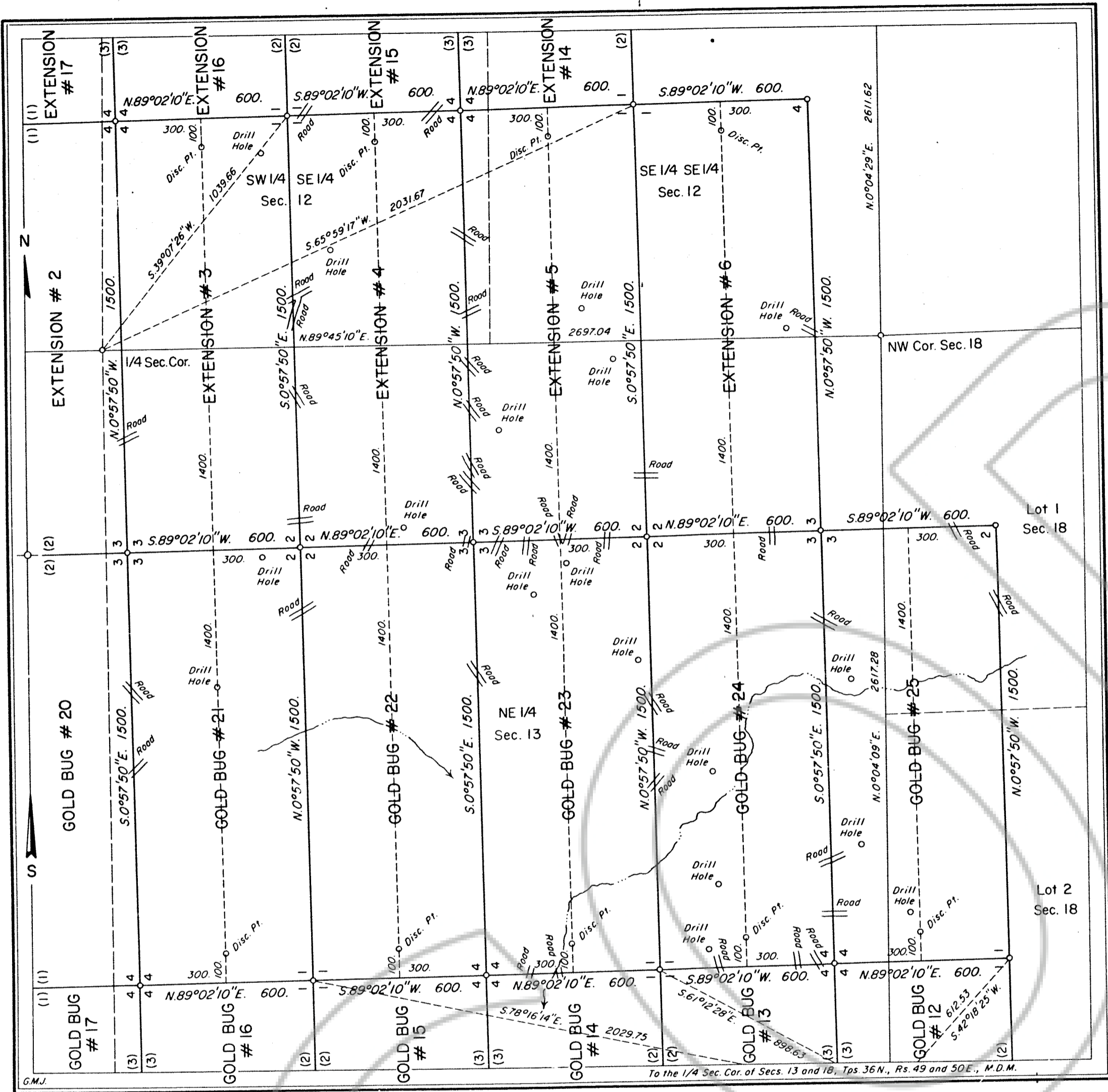
Sheet No. 1 of 5 Sheets

165534



5065

FILED AT THE REQUEST OF *United States Bank*  
 on 12/18/96 at 59 mins, past 1:2 M.  
 RECORDS & DEEDS COUNTY, NEVADA M. N. REBALEATI, Recorder  
 File No. 165534 Fee \$ 0



**MINERAL SURVEY**  
**No. 5065**  
**NEVADA**

Sheet No. 2 of 5 Sheets

165534

5065

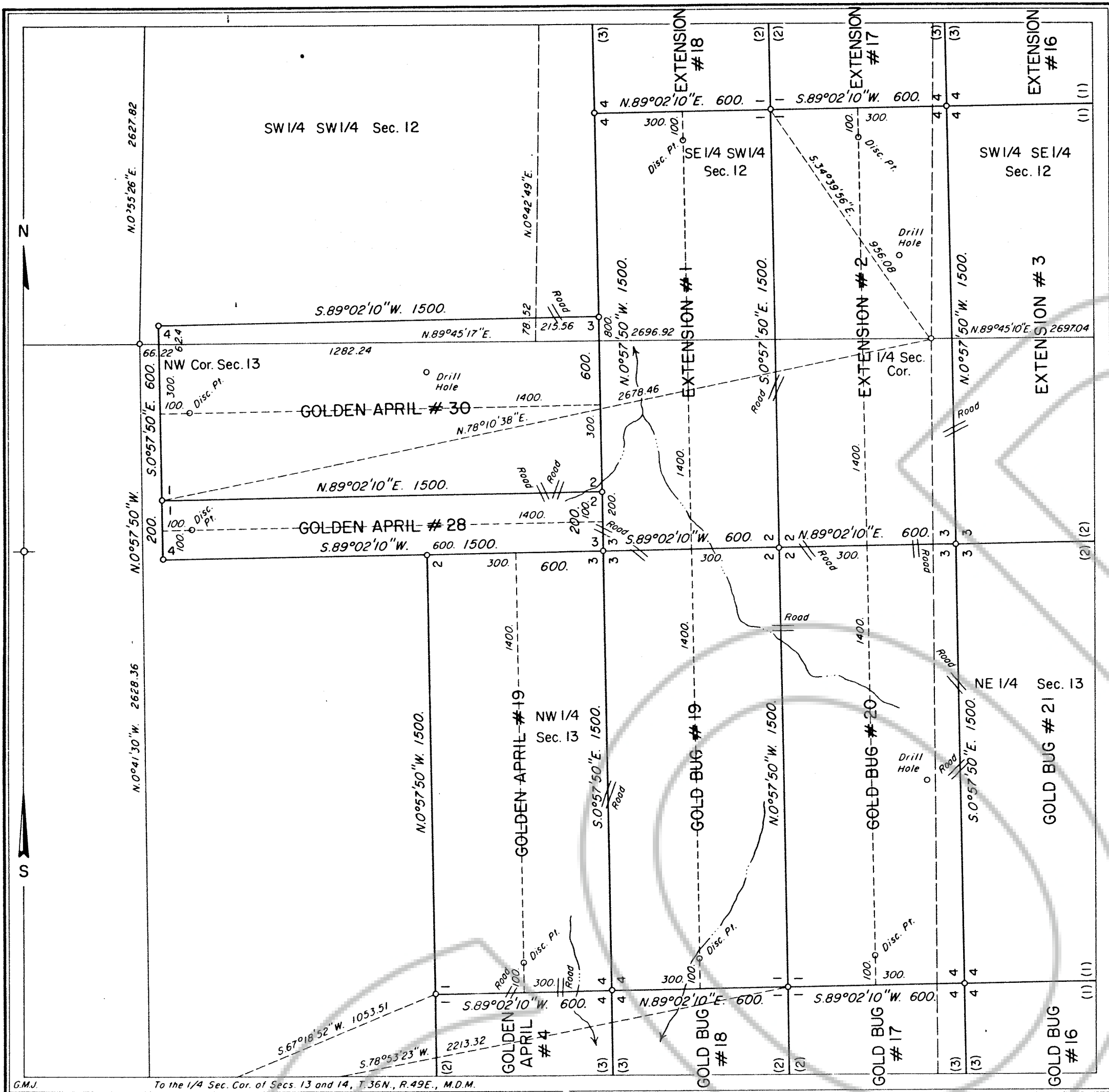
FILED AT THE REQUEST OF United States (BLM)  
 on 12/18 1996, at \_\_\_\_\_ mins, past 2 P.M.  
 RECORDS OF EUREKA COUNTY, NEVADA M. N. REBALETTI, Recorder  
 File No. 165534 Fee \$ \_\_\_\_\_

NUMBER

DRAWING NUMBER  
**165534**

DRAWING NUMBER  
**MS # 5065**  
**285**





**MINERAL SURVEY**  
**No. 5065**  
**NEVADA**

Sheet No. 3 of 5 Sheets

5065

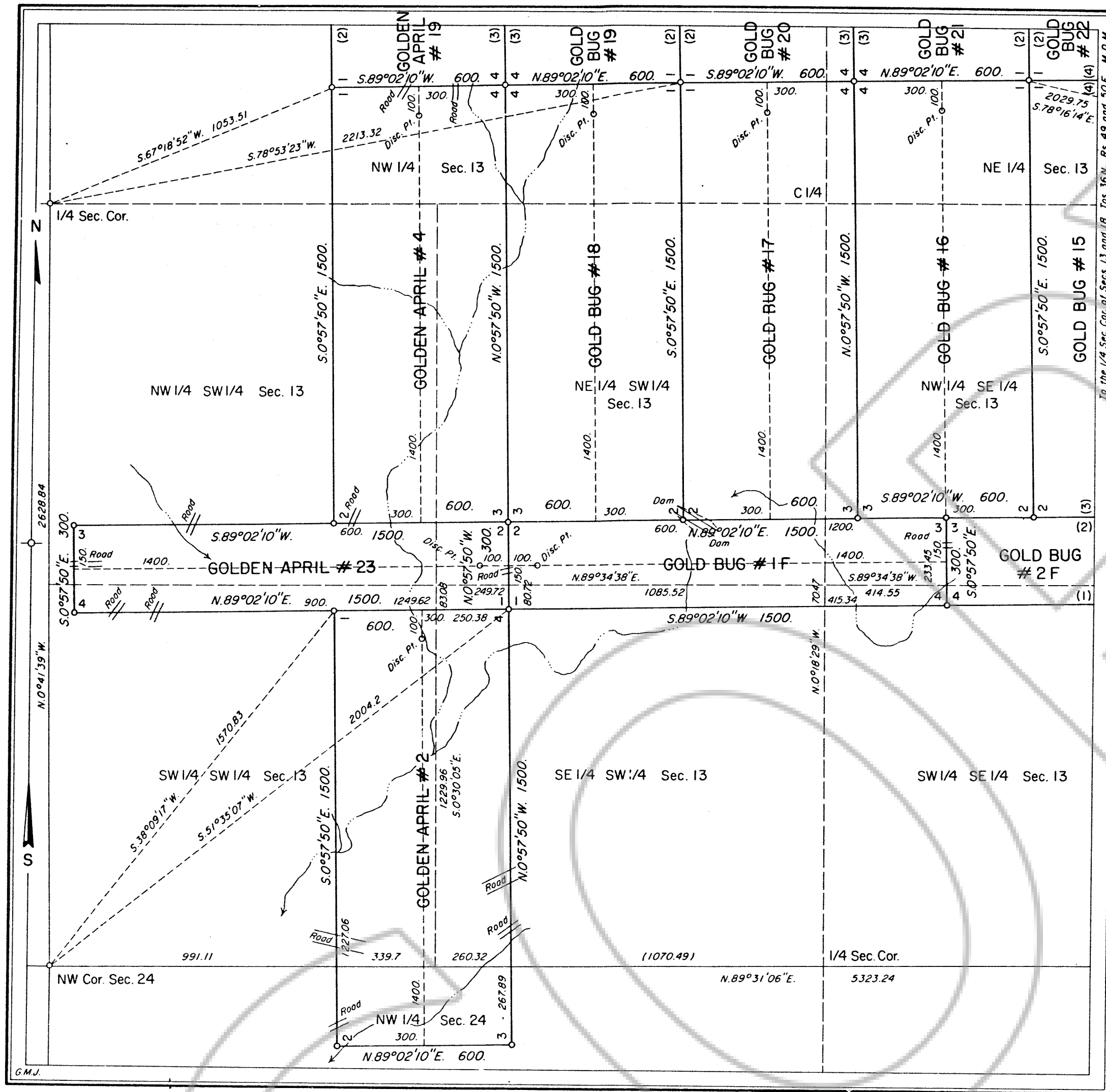
FILED AT THE REQUEST OF United States (GAM)  
 on 12/18 19 96, at 2 mins, past 2 P.M.  
 SULLY COUNTY, NEVADA M. N. RESALEATI, Recorder  
 Fee \$ 165534

NUMBER

DRAWING NUMBER  
**165534**

DRAWING NUMBER  
**MS # 5065**  
**385**

165534



**MINERAL SURVEY**  
**No. 5065**  
**NEVADA**

Sheet No. 4 of 5 Sheets

5065

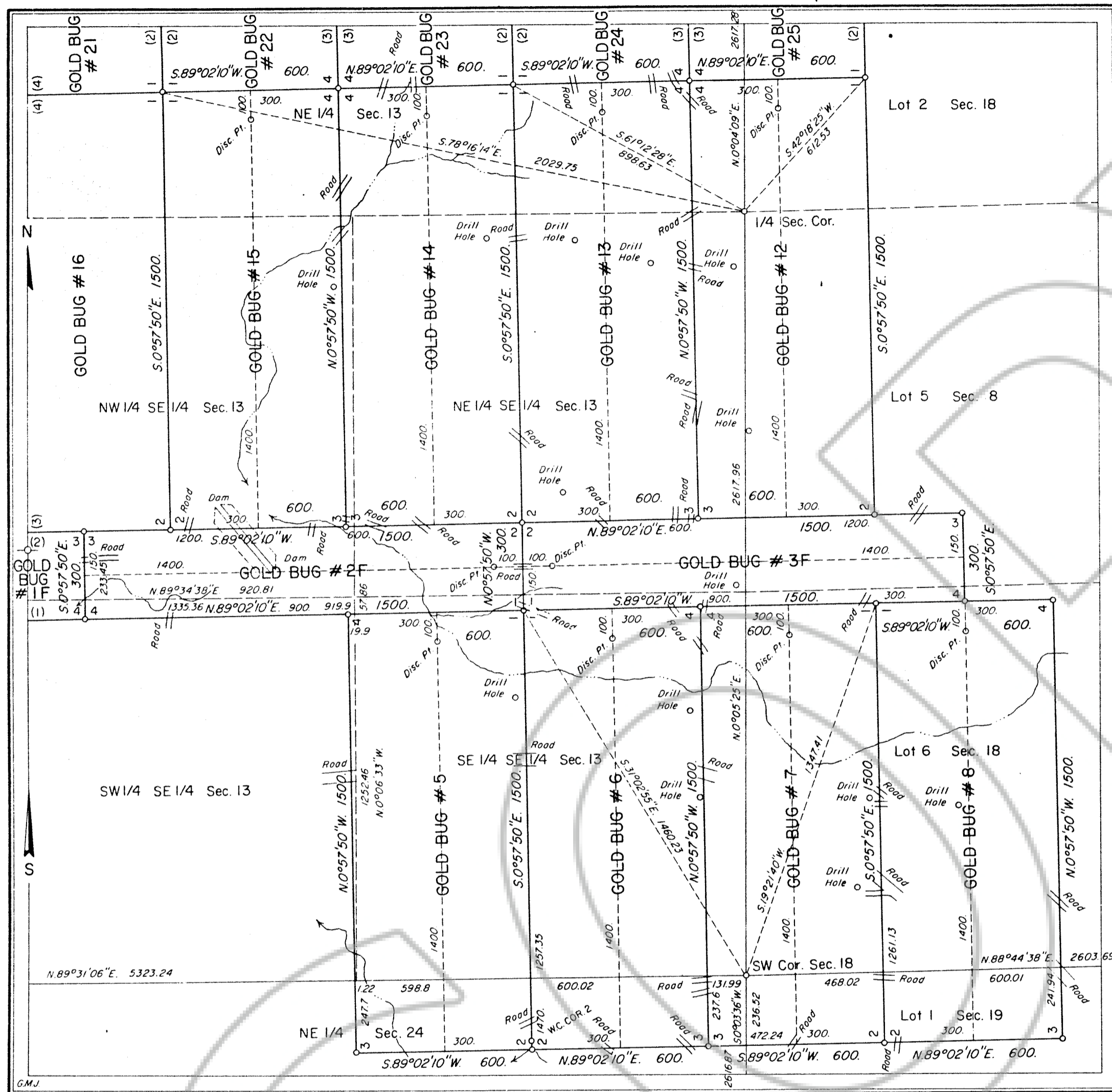
165534

FILED AT THE REQUEST OF *United States (B.M.)*  
 on 12/18 1996, at \_\_\_\_\_ mins. past 2 P.M.  
 REC'D THIS DAY IN CLERK'S OFFICE, COUNTY OF CLATSOP, NEVADA. M. N. REPALE, Recorder  
 File No. 165534 Fee \$ 0

DRAWING NUMBER  
**165534**

DRAWING NUMBER  
**MS # 5065**  
**485**





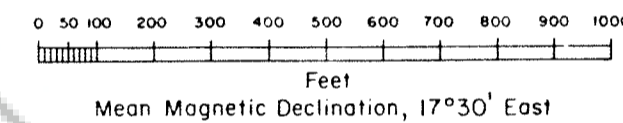
MINERAL SURVEY  
No. 5065  
NEVADA

Sheet No. 5 of 5 Sheets

CLAIM OF  
BARRICK GOLDSTRIKE MINES, INC.

KNOWN AS THE  
Extension #1 through Extension #6,  
Extension #14 through Extension #18,  
Gold Bug #1F through Gold Bug #3F,  
Gold Bug #5 through Gold Bug #8,  
Gold Bug #12 through Gold Bug #25,  
Golden April #2, Golden April #4,  
Golden April #19, Golden April #23,  
Golden April #28 and Golden April #30 Lodes

SITUATE IN  
Secs. 12, 13 and 24, T.36N., R.49E., M.D.M. and  
Secs. 18 and 19, T.36N., R.50E., M.D.M.  
EUREKA and ELKO COUNTIES  
Lynn Mining District  
Lot 40°59'37"N., Long. 116°22'26"W.,  
at Cor. No. 1, Gold Bug #7 Lode



Surveyed, Oct. 14 to Dec. 5, 1991,  
By Don M. McHarg, Mineral Surveyor

UNITED STATES DEPARTMENT OF THE INTERIOR  
BUREAU OF LAND MANAGEMENT

Reno, Nevada, April 6, 1992  
I hereby certify that this plat of Mineral Survey  
No. 5065, Nevada, is strictly conformable to the field  
notes of said survey which have been examined and  
approved.

*John S. Parish*  
Chief, Branch of Cadastral Survey

165534

5065

FILED AT THE REQUEST OF *United States (Barrick)*  
on *12/18* 19 *96*, at \_\_\_\_\_ mins, past *2 P.*  
RECORDS OF EUREKA COUNTY, NEVADA M. N. REGALEATI, Register  
File No. **165534** Fee \$ \_\_\_\_\_

NUMBER  
DRAWING NUMBER  
165534  
DRAWING NUMBER  
585  
MS#5065