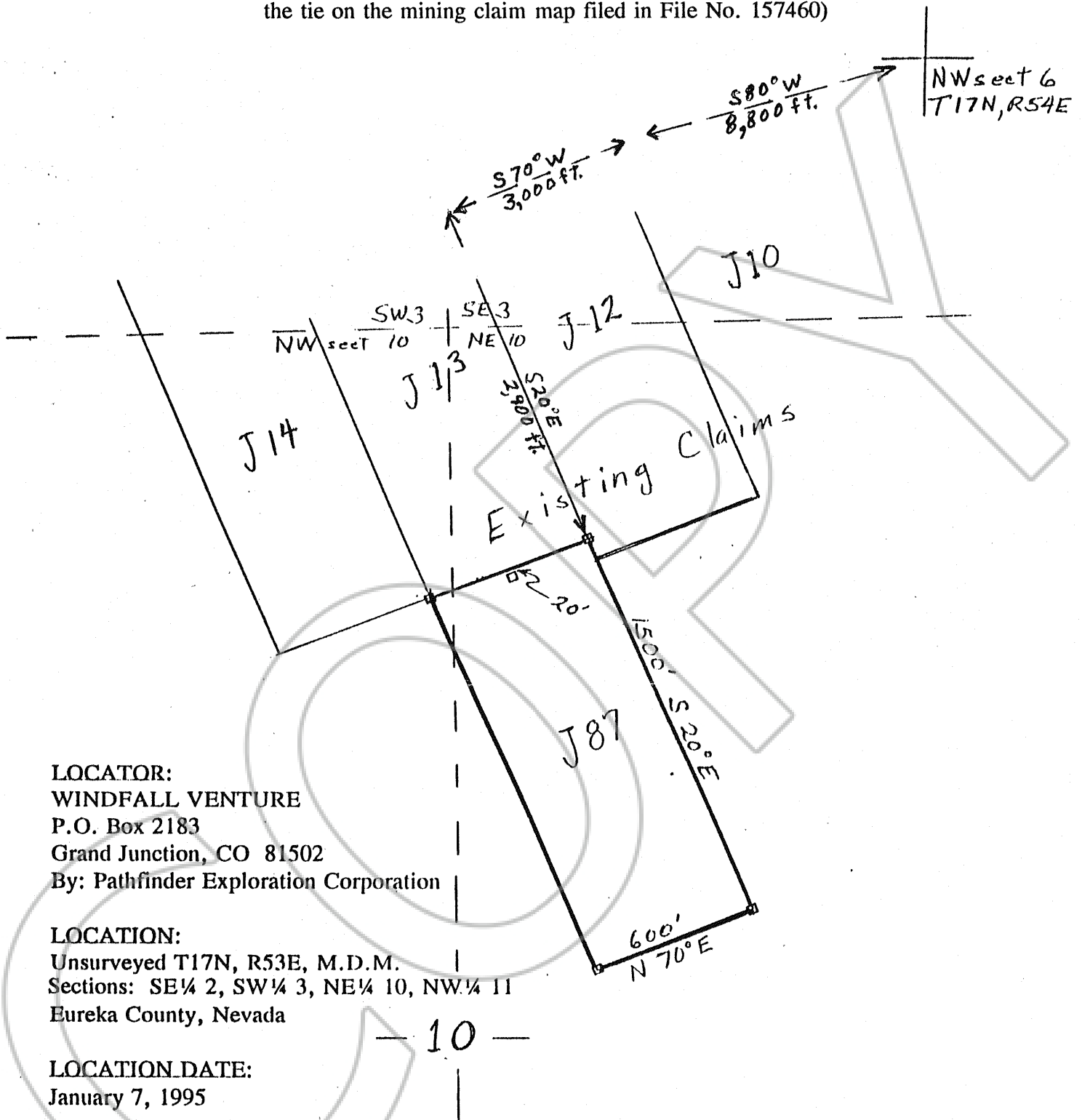


AMENDED CLAIM MAP

for J87 Unpatented Lode Mining Claim

(This map corrects adjoining claim names and restates the tie on the mining claim map filed in File No. 157460)



LOCATOR:
WINDFALL VENTURE
P.O. Box 2183
Grand Junction, CO 81502
By: Pathfinder Exploration Corporation

LOCATION:
Unsurveyed T17N, R53E, M.D.M.
Sections: SE¼ 2, SW¼ 3, NE¼ 10, NW¼ 11
Eureka County, Nevada

LOCATION DATE:
January 7, 1995

TIE: the NE corner of the J87 mining claim is approximately
S 80° W, 8,800 feet; thence
S 70° W, 3,000 feet; thence
S 20° E, 2,900 feet from the NW corner of Section 6, T17N, R54E.

All corners and the location monument are 2'x2"x4½' wooden posts.

SCALE:
1 inch = 500 feet

Prepared by Denis R. Anderson 8/95

FILED AT THE REQUEST OF Pathfinder
on Sept 5 19 95, at 23 mins, past 8 AM,
RECORDS OF EUREKA COUNTY, NEVADA M. N. REBALEATI, Recorder
File No. 158713A Fee \$ 7.00
Amends # 157460