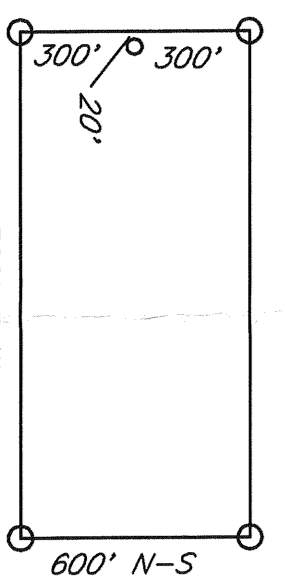


R 52 E



TYPICAL CLAIM:



500 0 500 1000 Feet

LOCATOR:

GRANGES (U.S.) Inc.  
350 S. Rock Blvd., Suite E  
Reno, NV 89502

LOCATION:

Sections 10, 11, 14, 15 T22N, R52E  
Eureka County, Nevada

LOCATION DATE:

Sept. 4 & 5 1995 PET 1-74

THE POINT:

The SE corner of PET 36 is 150' East and 100' South  
from the SE corner Section 10 T22N, R52E

NOTES:

All claims are 1320' x 600'.  
All monuments are 2"x2"x4' wood posts, with  
location monuments 20' in from end center.

FILED AT THE REQUEST OF *Granges (US) Inc.*  
RECORDS OF THE COUNTY CLERK, EUREKA COUNTY, NEVADA  
FILE NO. **160950** DATE **SEP 13 1995** FEE \$ **25.00**

**AMENDS # 768247**  
**PET 1-74 LODE MINING CLAIMS**

Scale: 1"=500'	Location: Sept. 4 & 5 1995	Drawn By: GH
Date: 9, 1995		Revised:
By: <b>GRANGES (US) Inc.</b>		
350 S. Rock Blvd., Suite E, Reno, Nevada 89502		Map 1 of 1