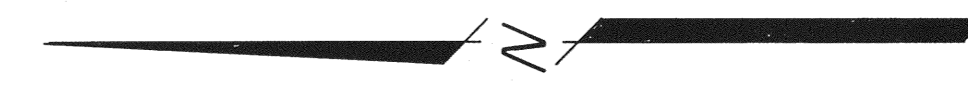


T. 20 N., R. 51 E., M.D.B. & M.
(UNSURVEYED)

T. 19 N., R. 51 E., M.D.B. & M.
(UNSURVEYED)

NOTES:

- All claims are 600' wide by 1500' long with Location Monuments 10' in from the end line.
- At all Corners and Location Monuments are 2" x 2" x 4' long wooden stakes with aluminum tags denoting the appropriate corners.
- o = Corner stakes.
• = Location Monuments.
- ACR 200 thru ACR 241 located November 18, 1995.
ACR 242 thru ACR 255 located November 19, 1995.
ACR 129 thru ACR 150 located November 25, 1995.
ACR 111 thru ACR 128 located November 26, 1995.
ACR 100 thru ACR 110 located November 27, 1995.
- These claims are located by: American Carbonate Rock Inc.
In Care Of: Avansino, Melarkey, Knobel, McMullen & Mulligan
165 West Liberty Street, Suite 210, Reno, Nevada 89501
- There is a total of 107 lode mining claims.



BASES OF BEARINGS
SOLAR OBSERVATION

FILED AT THE REQUEST OF *American Carbonate Rock*
 on Jan 27 1995, at 2:28 mins. past 1:00 P.M.
 RECORDS OF EUREKA COUNTY, NEVADA M. N. REBALEATI, Recorder
 File No. 161058 Fee \$ 1605.00
 161058 160058
 0 500 1000 1500 2000
 SCALE: 1" = 500'

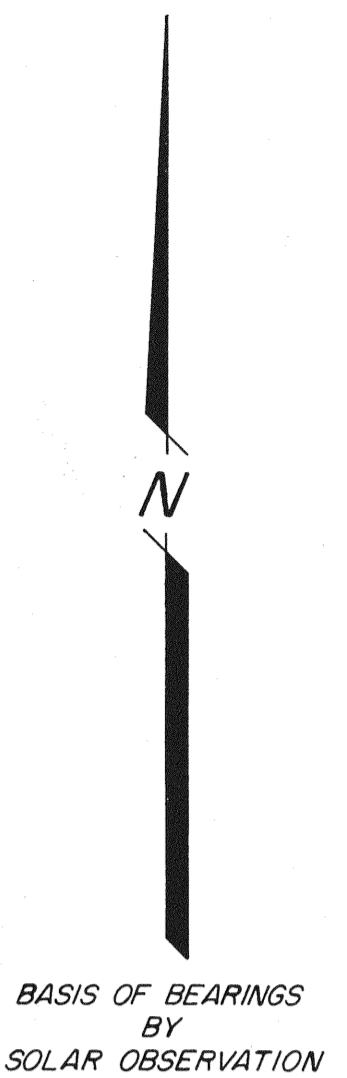
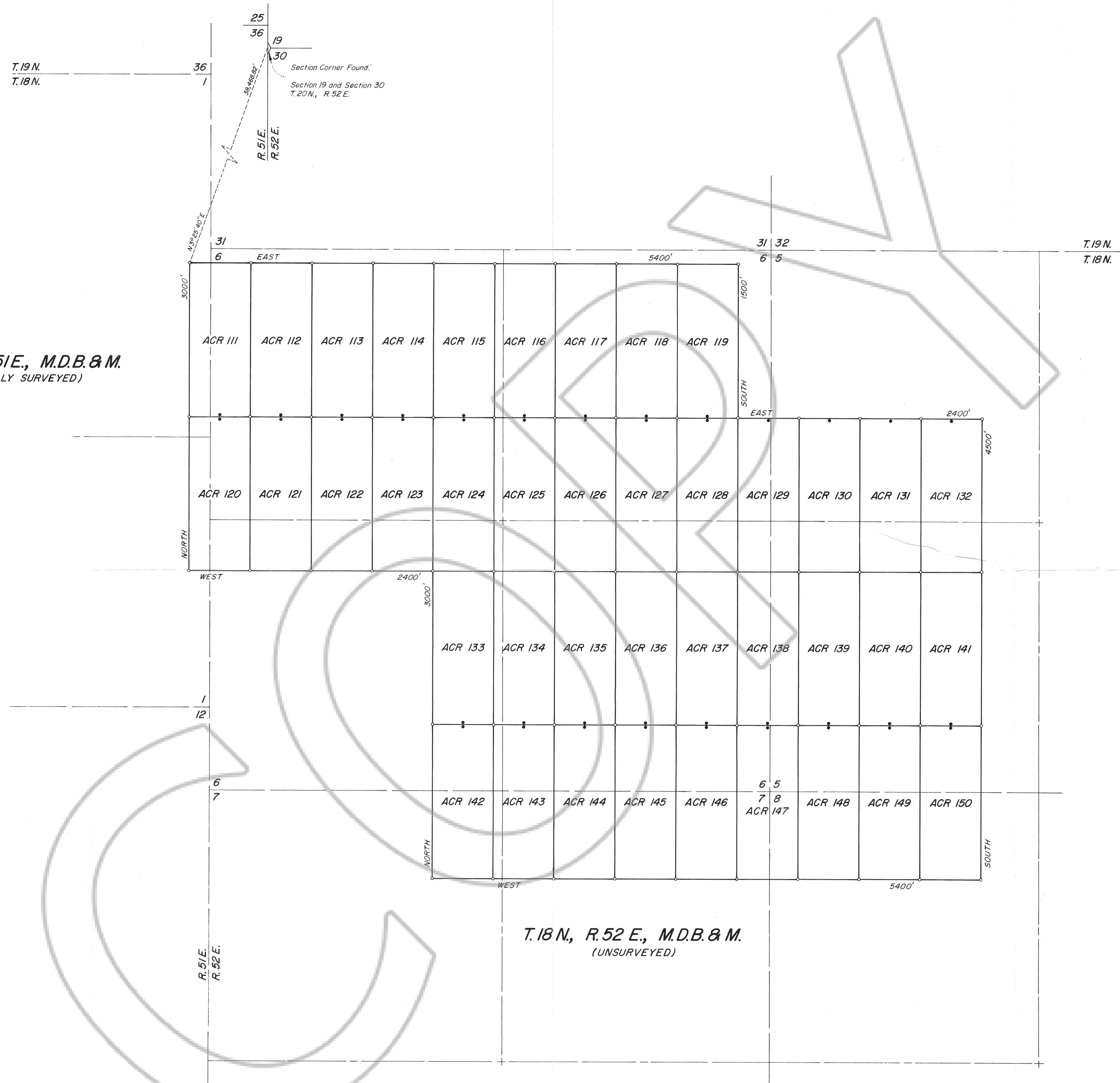
SHEET No. 1 of 3

MAP SHOWING
ACR GROUP
LODE MINING CLAIMS
 IN
 T. 19, 19 & 20 N., R. 51 & 52 E., M.D.B. & M.
 EUREKA COUNTY, NEVADA
 FOR
AMERICAN CARBONATE ROCK INC.

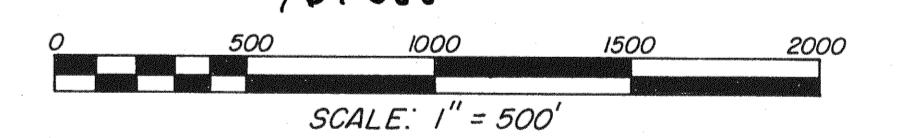
SURVEYED & MAPPED
 BY
 BRADSHAW ENGINEERING, INC.
 DUCKWATER, NEVADA
 DECEMBER, 1995

T.18 N., R.51 E., M.D.B. & M.
(PARTIALLY SURVEYED)

T.18 N., R.52 E., M.D.B. & M.
(UNSURVEYED)



FILED AT THE REQUEST OF *American Carbonate Rock*
 on *Jan 29 95*, at *28* mins, past *10* P.M.
 RECORDS OF EUREKA COUNTY, NEVADA M. N. REBALEATI, Recorder
 File No. *160058* Fee \$ *1605.00*
161058



SHEET No. 3 of 3

MAP SHOWING
ACR GROUP
LODE MINING CLAIMS
 IN
 T.18, 19 & 20 N., R.51 & 52 E., M.D.B. & M.
 EUREKA COUNTY, NEVADA
 FOR
AMERICAN CARBONATE ROCK INC.

SURVEYED & MAPPED
 BY
 BRADSHAW ENGINEERING, INC.
 DUCKWATER, NEVADA
 DECEMBER, 1995