

LOCATOR:

161708

R 49 E

600' E-W

URANERZ U.S.A., Inc.  
5450 Riggins Court, Suite 6  
Reno, Nevada 89502

LOCATION:

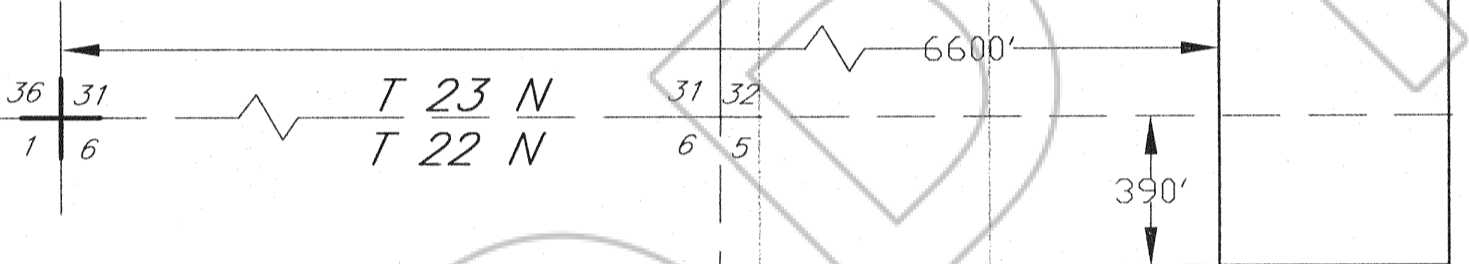
Section 5 T22N, R49E  
Section 32 T23N, R49E  
Mount Diablo Meridian,  
Eureka County, Nevada

TIE POINT:

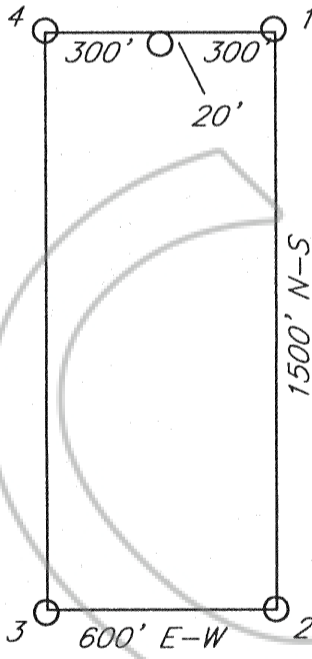
The NW corner of PARK 24 is 390'  
South and 6600' East of the brass cap  
located at the SW corner of Section 31  
T23N, R49E, M.D.M.

NOTES:

All location monuments are set 20'  
in from end line.  
All monuments are 2"x2"x4' long wooden  
post with scribed metal tags.  
All claims are 1500' x 600'



TYPICAL CLAIM:



Magnetic Declination 16°E

URANERZ U.S.A., Inc.

PARK 23, 24, 47, 48  
LODE MINING CLAIMS

March 1, 1996	Located: 1/10/96	Drawn By: GH
Scale: 1"=500'	Completed: 1/13/96	Revised:
5450 Riggins Court, Suite 6, Reno, Nevada 89502		

FILED AT THE REQUEST OF Uranerz USA Inc  
 on Mar 13 1996, at 16 mins, past 11 A  
 RECORDS of EUREKA COUNTY, NEVADA M. N. REBALEATI, Recorder  
 File No. 161708 Fee \$ 60.00