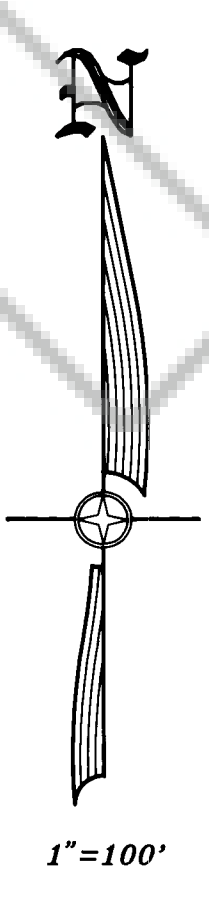


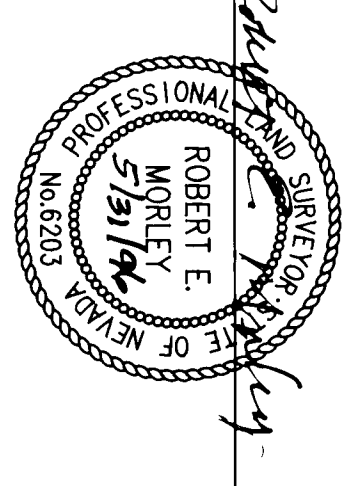
163207



SURVEYOR'S CERTIFICATE

1. ROBERT E. MOKLEY, A PROFESSIONAL LAND SURVEYOR IN THE STATE OF NEVADA, CERTIFY THAT:
 1. THIS PLAT REPRESENTS THE RESULTS OF A SURVEY CONDUCTED UNDER MY DIRECT SUPERVISION AT THE INSTANCE OF THE EUREKA COUNTY SCHOOL DISTRICT.
 2. THE LANDS SURVEYED LIE WITHIN SECTION 14, T19N - R33E, MDB & M, AND THE SURVEY WAS COMPLETED ON FEBRUARY 22, 1998.
 3. THIS PLAT COMPLETES WITH THE APPLICABLE STATE STATUTES AND ANY LOCAL ORDINANCES IN EFFECT ON THE DATE THAT THE GOVERNING BODY GAVE ITS FINAL APPROVAL.
 4. THE MONUMENTS DEPICTED ON THE PLAT ARE OF THE CHARACTER SHOWN, OCCUPY THE POSITIONS INDICATED AND ARE OF SUFFICIENT NUMBER AND DURABILITY.

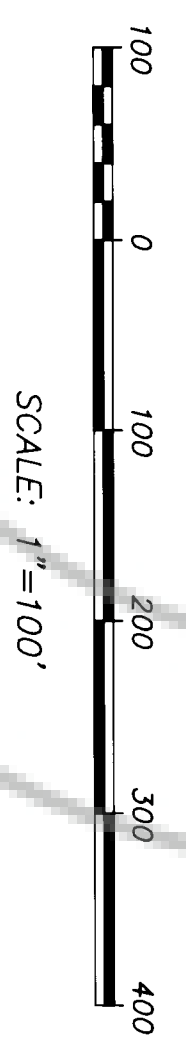
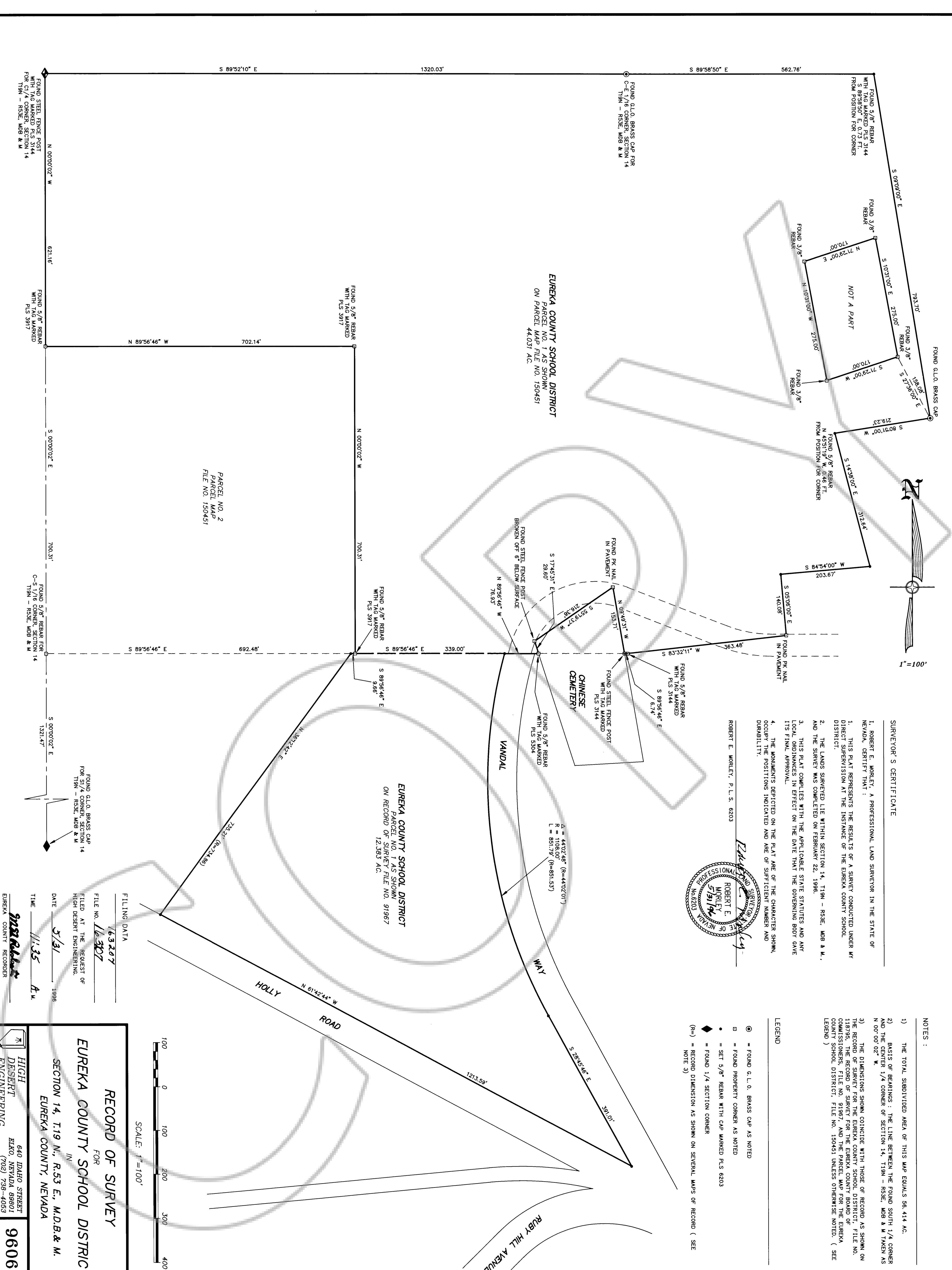
ROBERT E. MOKLEY, P.L.S. 6203



- NOTES:**
- 1) THE TOTAL SUBDIVIDED AREA OF THIS MAP EQUALS 56.414 AC.
 - 2) BASIS OF BEARINGS: THE LINE BETWEEN THE FOUND SOUTH 1/4 CORNER AND THE CENTER 1/4 CORNER OF SECTION 14, T19N - R33E, MDB & M TAKEN AS N 00°00'02" W.
 - 3) THE DIMENSIONS SHOWN COINCIDE WITH THOSE OF RECORD AS SHOWN ON THE RECORD OF SURVEY FOR THE EUREKA COUNTY SCHOOL DISTRICT, FILE NO. 163207. THE RECORD OF SURVEY FOR THE EUREKA COUNTY SCHOOL DISTRICT, FILE NO. 163207, IS THE BASIS FOR THE DIMENSIONS SHOWN ON THIS PLAT FOR THE EUREKA COUNTY SCHOOL DISTRICT, FILE NO. 150451 UNLESS OTHERWISE NOTED. (SEE LEGEND)

LEGEND

- ⊙ = FOUND G.L.O. BRASS CAP AS NOTED
- = FOUND PROPERTY CORNER AS NOTED
- ◆ = SET 5/8" REBAR WITH CAP MARKED PLS 6203
- ◆ = FOUND 1/4" SECTION CORNER
- (R) = RECORD DIMENSION AS SHOWN ON SEVERAL MAPS OF RECORD (SEE NOTE 3)



RECORD OF SURVEY

FOR
EUREKA COUNTY SCHOOL DISTRICT
 IN
EUREKA COUNTY, NEVADA

SECTION 14, T19 N., R53 E., MDB & M.

FILING DATA
 FILE NO. **163207**
 FILED AT THE REQUEST OF
 HIGH DESERT ENGINEERING.
 DATE **5/31** 1998
 TIME **11:35** A.M.
High Desert Engineering
 EUREKA COUNTY RECORDER

High Desert Engineering
 640 IDAHO STREET
 ELKO, NEVADA 89801
 (702) 738-4053
96068