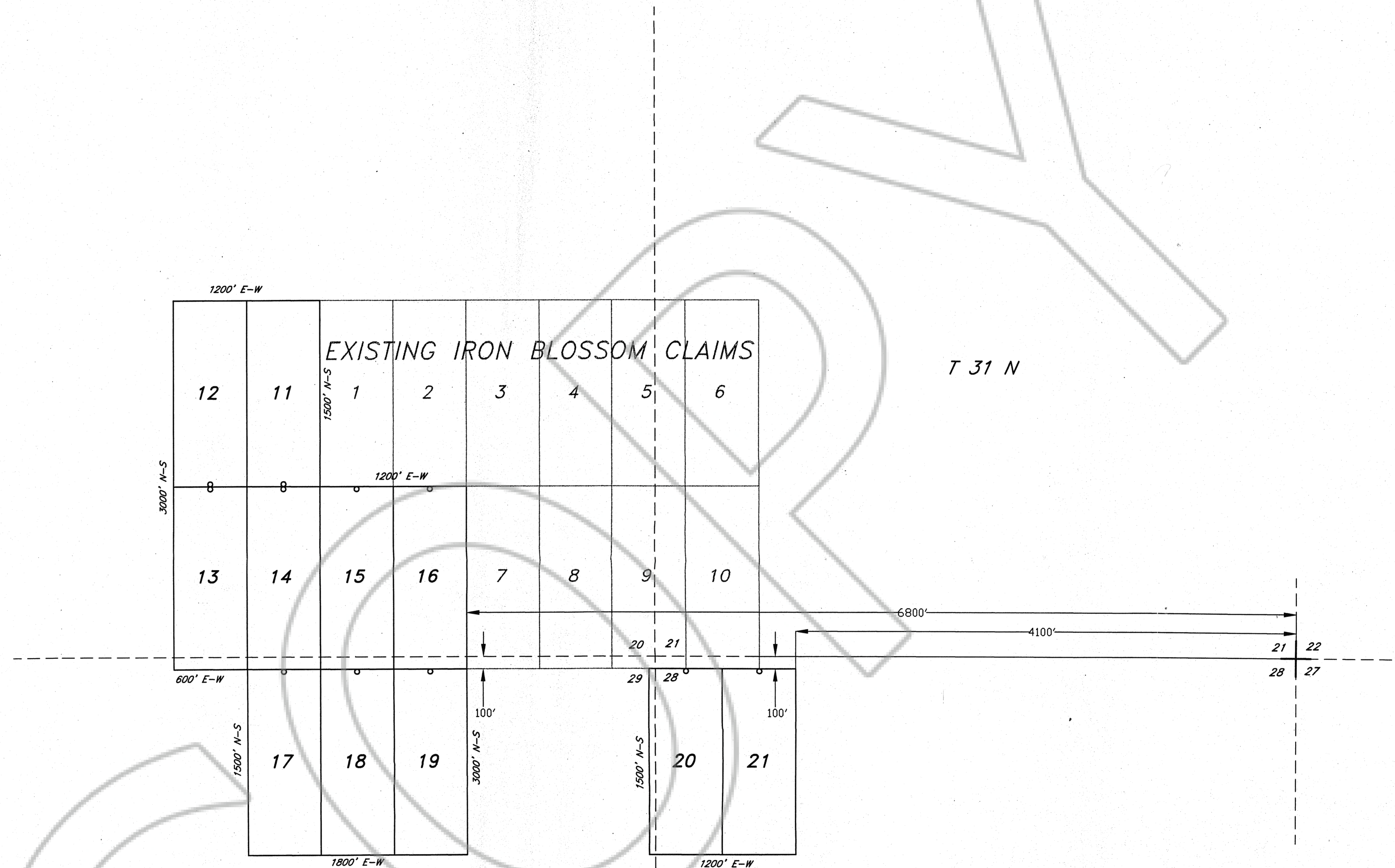


R 51 E



LOCATOR:
James R. Keighley
1055 South Wells Ave., Suite 145
Reno, NV 89502

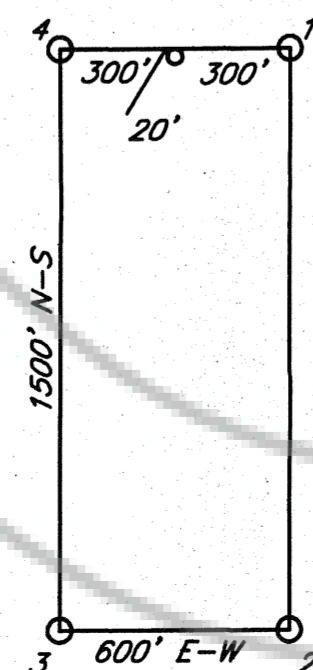
LOCATION:
Sections 20, 21, 28, 29 T31N, R51E
Eureka County, Nevada

LOCATION DATE:
4-24-96 IRON BLOSSOM 11-21

TIE POINT:
The NE corner of IRON BLOSSOM 21 is 4100' West and 100' South of the SE corner of Section 21, T31N, R51E
The NE corner of IRON BLOSSOM 19 is 6800' West and 100' South of the SE corner of Section 21, T31N, R51E

NOTES:
All claims are 1500' x 600'
All monuments are 1.5"x5" wood posts.
All location monuments are set at 20' from endlines.

TYPICAL CLAIM:



FILED AT THE REQUEST OF James R. Keighley
July 8 1996, at 11:46 a.m.,
 RECORDS OF EUREKA COUNTY, NEVADA M. N. REBALETTI, Recorder
 Fee \$ 165.00
163297

**IRON BLOSSOM 11-21
LODE MINING CLAIMS**

Sections 20, 21, 28, 29 T31N, R51E
Eureka County, Nevada

May 28, 1996 Map 1 of 1