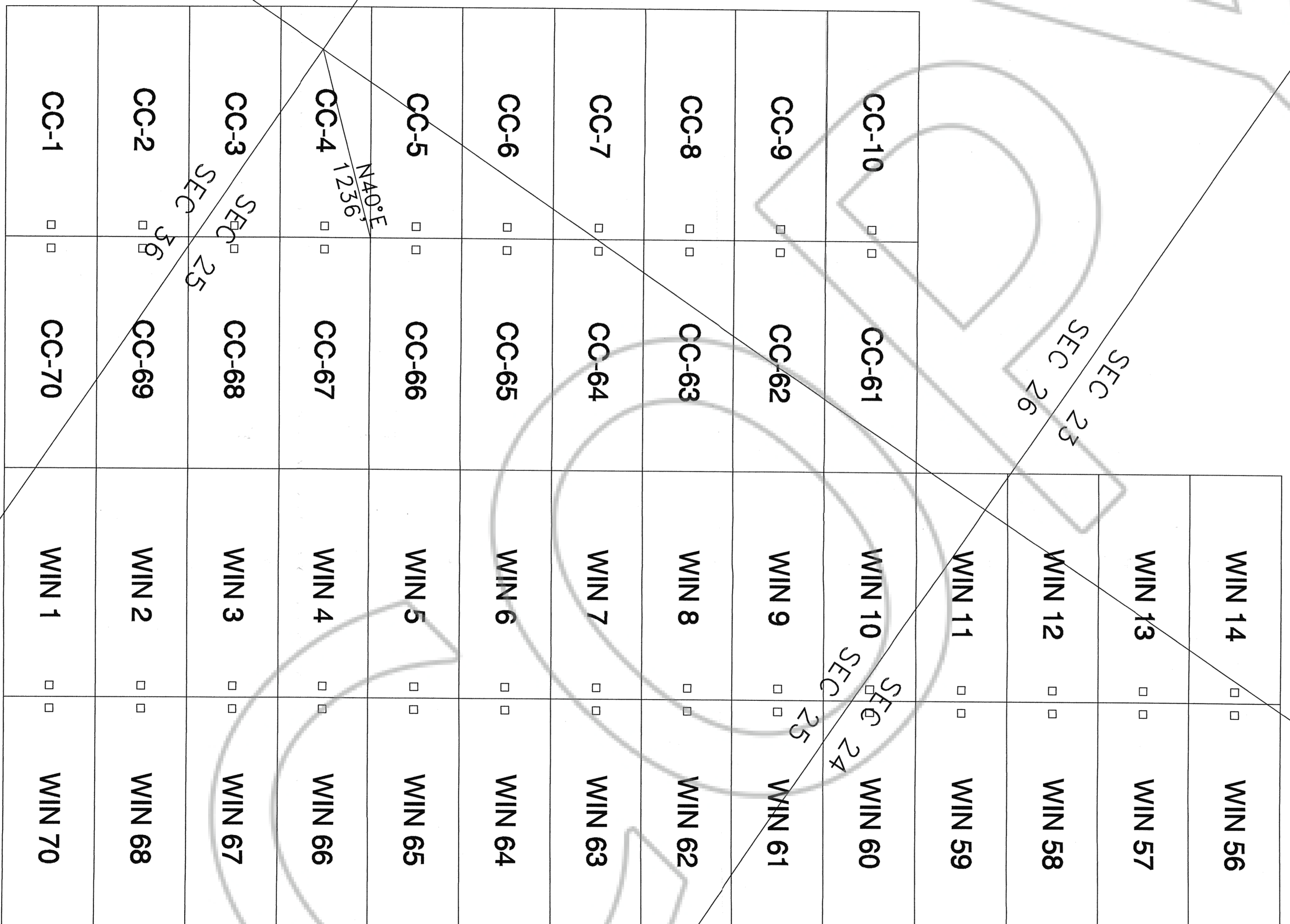



163522




  
 T24N R49E T24N R50E

SEC 26  
 SEC 35

SEC 23  
 SEC 26

SEC 24  
 SEC 25

N40°E  
 1236'

SEC 25  
 SEC 36

SECTIONS 23, 24, 25, 26, 35 AND 36  
 T24N R49E R50E

LOCATED MAY 31, 1996  
 CC-1 TO 10  
 CC-51 TO 70  
 WIN-56 TO 70

LOCATOR: CUN MINERALS INC.  
 One East First Street, Reno  
 Washoe County, Nevada 89501  
 c/o 922-510 W. Hastings Street  
 Vancouver, BC V6B 1L8

FILED THE REQUEST OF *Cun Minerals Inc*  
 on *July 19 96* at *5:13 pm*  
 RECORDS OF EUREKA COUNTY, NEVADA M. N. REBALEA, Registrar  
 File No. *163522* Fee \$ *140.00* *09 1*

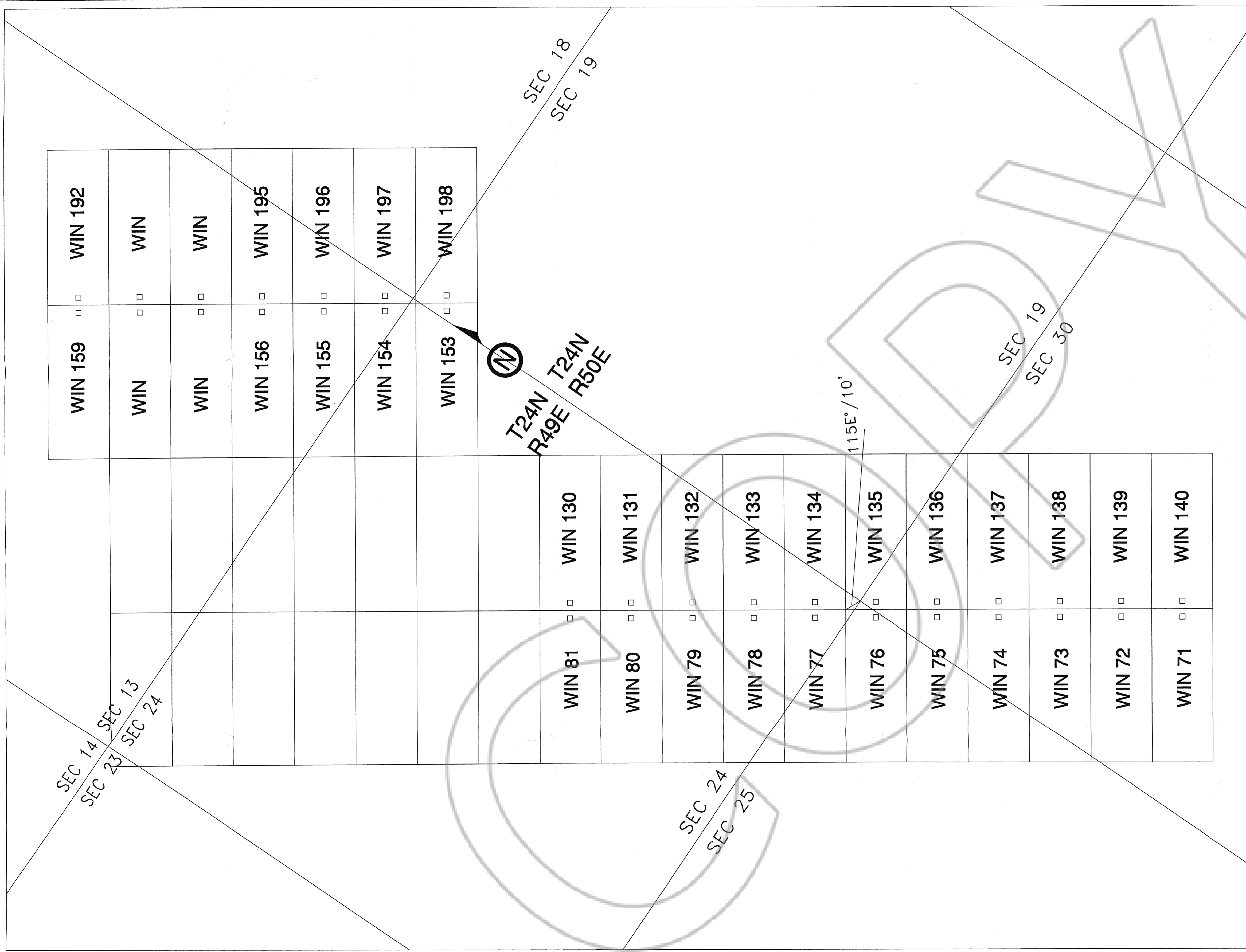
CUN MINERALS INC

WIN AND CC CLAIM GROUPS

EUREKA COUNTY, NEVADA

DATE: June, 15, 1996 SCALE: 1" = 500'  
 DRAWN: TC 96-006 DWG.# 1 OF 2





SEC 14  
SEC 23  
SEC 13  
SEC 24

SEC 24  
SEC 25

SEC 18  
SEC 19

SEC 19  
SEC 30

T24N  
R49E  
R50E

115°/10'

WIN 159	□	WIN 192
WIN	□	WIN
WIN	□	WIN
WIN 156	□	WIN 195
WIN 155	□	WIN 196
WIN 154	□	WIN 197
WIN 153	□	WIN 198

WIN 81	□	WIN 130
WIN 80	□	WIN 131
WIN 79	□	WIN 132
WIN 78	□	WIN 133
WIN 77	□	WIN 134
WIN 76	□	WIN 135
WIN 75	□	WIN 136
WIN 74	□	WIN 137
WIN 73	□	WIN 138
WIN 72	□	WIN 139
WIN 71	□	WIN 140

SECTIONS 13, 18, AND 24  
T24N R49E R50E  
LOCATED MAY 4, 1996  
WIN 154, 155, 156 AND 159  
LOCATED MAY 4, 1996  
WIN 192, 195, 196 AND 197

SECTIONS 14, 18, 19, 24, 25 AND 30  
T24N R49E R50E  
LOCATED MAY 3, 1996  
WIN 71 TO 81  
WIN 130 TO 140

LOCATOR: CUN MINERALS INC.  
One East First Street, Reno  
Washoe County, Nevada 89501  
C/O 322-510 W. Hastings Street  
Vancouver, BC V6B 1L8

FILED THE REQUEST OF *Cun Minerals*  
on *July 17 96* at *5:51* mins. past  
RECORDS OF EUREKA COUNTY, NEVADA. M. N. REED (A. L.) Recorder  
File No. **163522** Fee \$ *114.00* Pg 2

CUN MINERALS INC

WIN AND CC CLAIM GROUPS

EUREKA COUNTY, NEVADA

DATE: June, 15, 1996 SCALE: 1" = 500'  
DRAWN: TC 96-006 DWG.# 2 OF 2