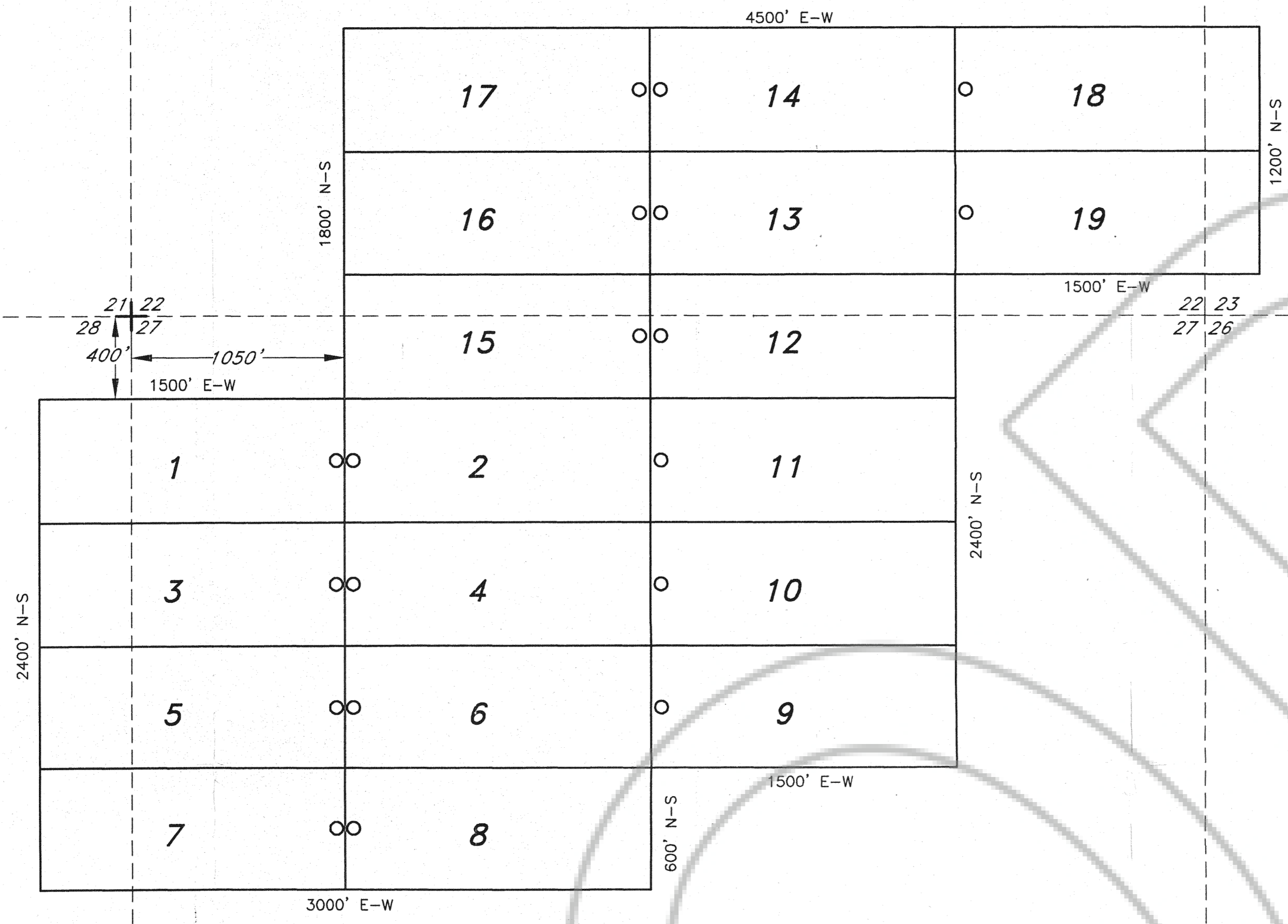


R 48 E

T 24 N



LOCATOR:

URANERZ U.S.A., Inc
5450 Riggins Court, Suite 6
Reno, NV 89502

LOCATION:

Sections 22, 23, 27, 28, T24N, R48E
Eureka County, Nevada

TIE POINT:

The NE corner of KP1 is 1050' East and 400' South
of the NW corner Section 27, T24N, R48E

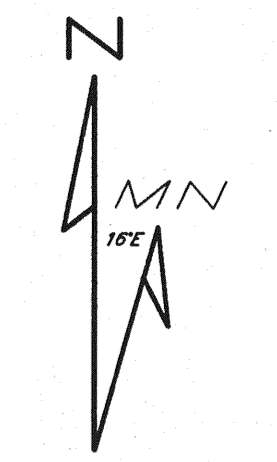
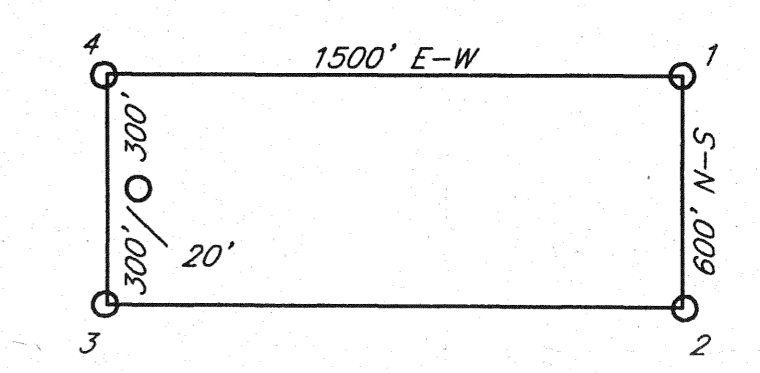
LOCATION DATES:

6-13-96	KP 1-6
6-25-96	KP 7-17
6-26-96	KP 18, 19

NOTES:

All claims are 1500' x 600' wide.
All monuments are 2" x 2" x 4' wooden post with metal tags.
KP 1-8 the location monuments are 10' in along centerline.
KP 9-19 the location monuments are 20' in along centerline.

TYPICAL CLAIM:



Magnetic Declination 16'E

KP 1-19 LODE MINING CLAIMS		
Scale: 1"=500'	Located: 6-13-96, 6-25-96 6-26-96	Drawn By: GH
July 2, 1996	Completed: 6-27-96	Revised:
By: PACIFIC RIM EXPLORATION, Inc		
Map 1 of 1		

FILED AT THE REQUEST OF Uranerz U.S.A. Inc
 on Aug 19 19 96, at 3:30 mins, past 11 A.M.
 RECORDS OF EUREKA COUNTY, NEVADA M. N. REBAL (R) Recorder
 File No. 164378 Fee \$ 225.00