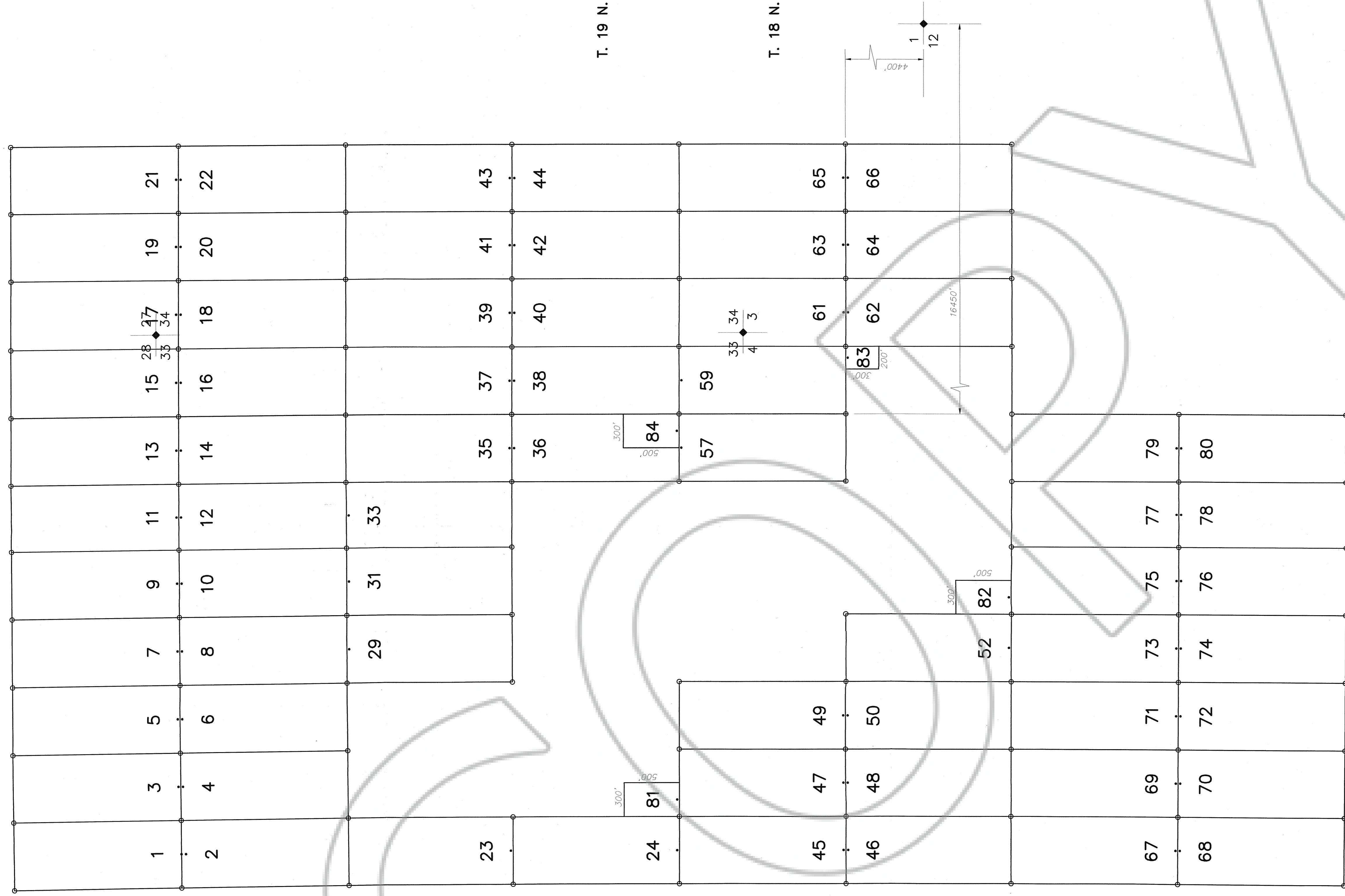


R. 52 E.



**LOCATOR:**

LEO DAMELE  
HC 62 BOX 310  
EUREKA, NEVADA 89316

**LOCATION:**

SECTIONS 3, 4, 9 T. 18 N., R. 52 E., M.D.M.B.  
SECTIONS 27, 28, 33, 34 T. 19 N., R. 52 E., M.D.M.B.  
EUREKA COUNTY, NEVADA

**TIE POINT:**

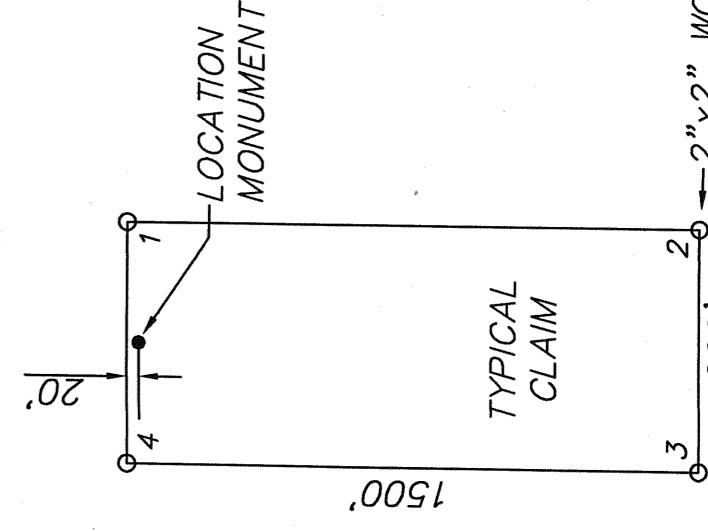
THE SE CORNER OF ACE 57 IS LOCATED APPROXIMATELY  
4,400 FEET NORTH AND 16,450 FEET WEST OF THE SE  
CORNER OF SECTION 1 T. 18 N., R. 52 E., M.D.M.B.

**LOCATION DATES:**

06/16/96 ACE 1-23, 35-44, 61-66  
06/17/96 ACE 45-50, 67-80  
06/18/96 ACE 24, 57, 59  
06/19/96 ACE 29, 31, 33, 52, 81-84

**NOTE:**

ALL CLAIMS ARE 1500' X 600' WITH LOCATION MONUMENTS  
LOCATED 20' IN FROM END LINES, UNLESS OTHERWISE  
NOTED. ALL MONUMENTS ARE 2" X 2" X 4' WOODEN POST.



ALL CLAIMS ARE 1500'X600'  
UNLESS OTHERWISE NOTED

FILED AT THE REQUEST OF *Leo Damele*  
ON *April 8 2006* at *10* mins, past  
RECORDS DIVISION, COUNTY CLERK'S OFFICE,  
FILE NO. **164506** Fee \$ 2250.00.

MAGNETIC DECLINATION:  
15.0' EAST

ACE 1-24, 29, 31, 33, 35-50, 52, 57, 59, 61-84  
LODE MINING CLAIMS

SCALE: 1"=500'  
08/05/96  
LOCATED:  
COMPLETED:

DRAWN BY:

REVISED:

BY: **NORTH AMERICAN EXPLORATION, Inc.**

1315 GREG ST., SUITE 107, SPARKS, NEVADA 89431

MAP 1 OF 1