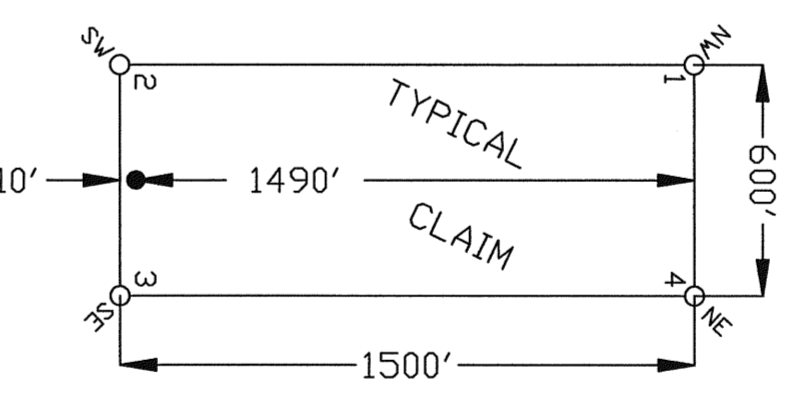
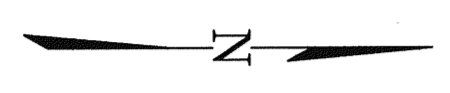
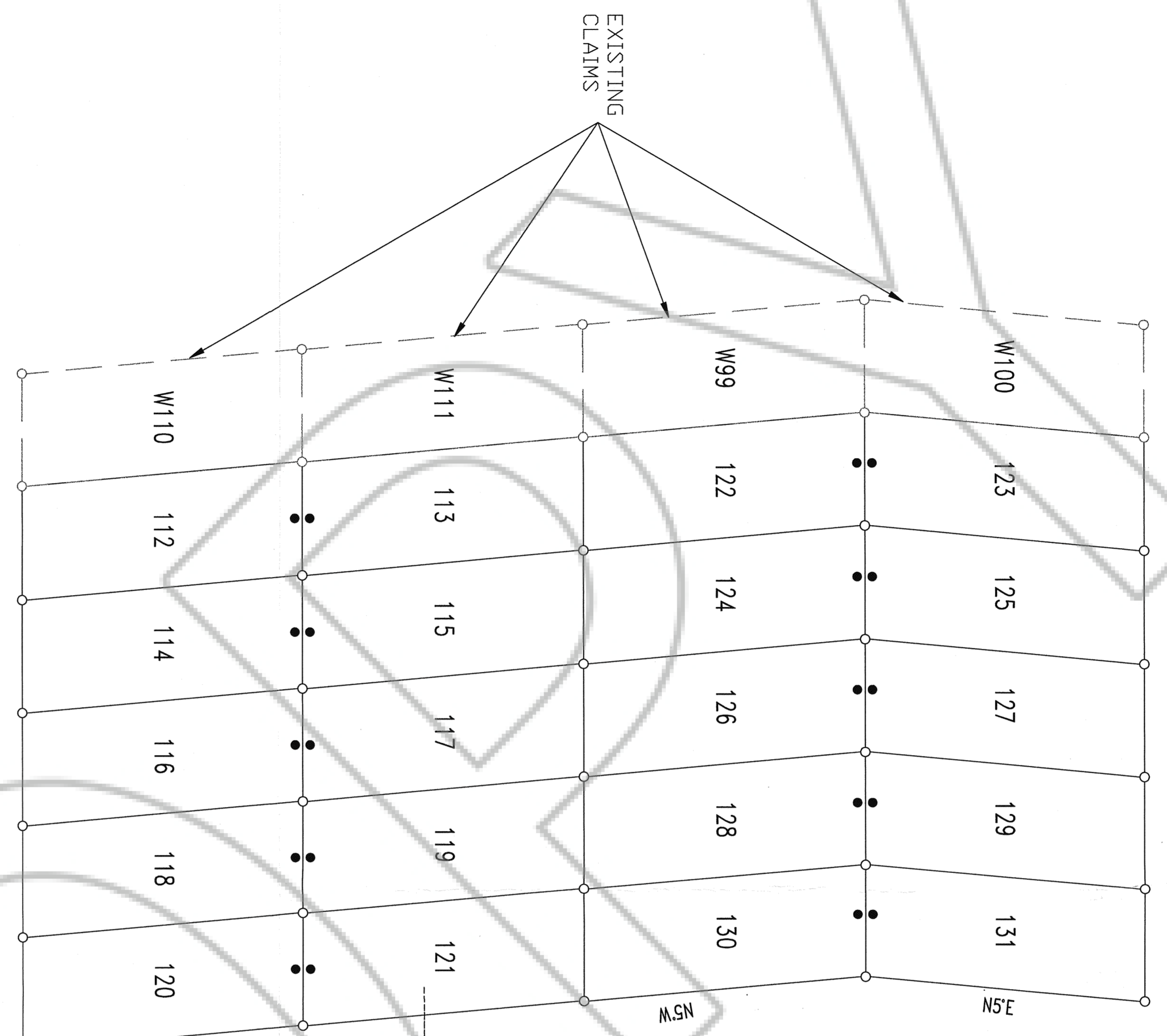


30 129  
31 132



NOTES  
 Location monuments set 10' from endline of claims. Claim posts are 2" x 2" x 48" wooden posts.  
 LOCATION DATE:  
 W 112 - 131 -- August 30, 1996

TIE POINT DATA:  
 SE CORNER OF W120 IS LOCATED APPROX. 18.750' NORTH AND 4.65' WEST OF TIE SE CORNER OF SECTION 19, R30E, T22N, M12P.M.



0 250 500 1000  
 SCALE: 1 IN. = 500 FT.

FILED AT THE REQUEST OF *Bill Howald*  
 11-22 96  
 165094  
 Fee \$ 380.00

**Central Nevada**  
 COUNTY CLERK  
 COUNTY OF BIENEVILLE, NEVADA

**BHP MINERALS INTL. EXPLORATION Inc.**  
 5330 S. 900 E., Suite 200  
 Salt Lake City, Utah 84117  
 W 112 - 131 Claims  
 Butte County, Nevada, B51E, T22N

30 DAY PUBLIC NOTICE PERIOD  
 2020/11/24/96

DATE: 10/16/96  
 COUNTY CLERK: Bill Howald  
 COUNTY CLERK: Bill Howald  
 COUNTY CLERK: Bill Howald