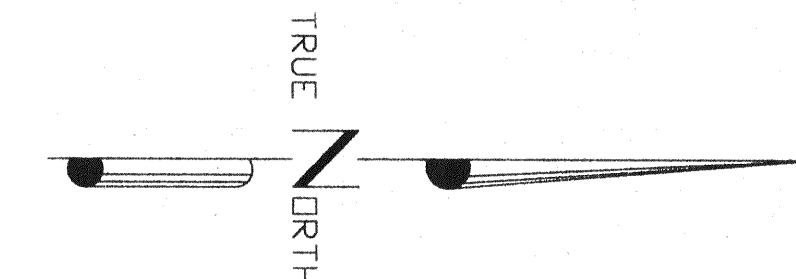


11 12
14 13

TIE: EAST 3366'

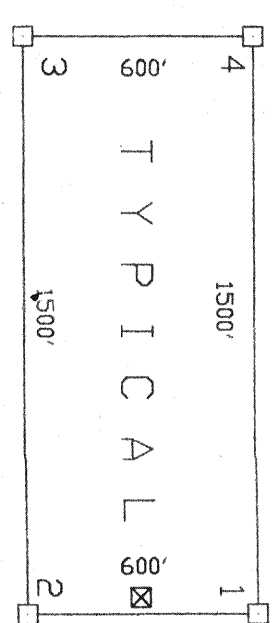
TIE: SOUTH 6814'



SCALE 1" = 500'

MAP OF THE
BRM
LODE MINING CLAIMS
Eureka County, Nevada

Locator
BARRICK GOLD EXPLORATION INC.
293 Spruce Road
Elko, Nevada 89801-4491



FILED AT THE REQUEST OF *Barrick Gold Corp*
on *Dec 16* 19 *96*, at *3:32* mins, past *1:00* P.M.
RECORDS OF EUREKA COUNTY, NEVADA M. N. REBALEATI, Recorder
File No. **165448** Fee \$ *290.00*

R. 50 E. R. 51 E.

EAST 3000'

NORTH 1200'

EAST 3000'

T. 24 N.

NORTH 10200'

SOUTH 9000'

WEST 3000'

SOUTH 1200'

WEST 1500'

SOUTH 1200'

WEST 1500'

23

24

19

26

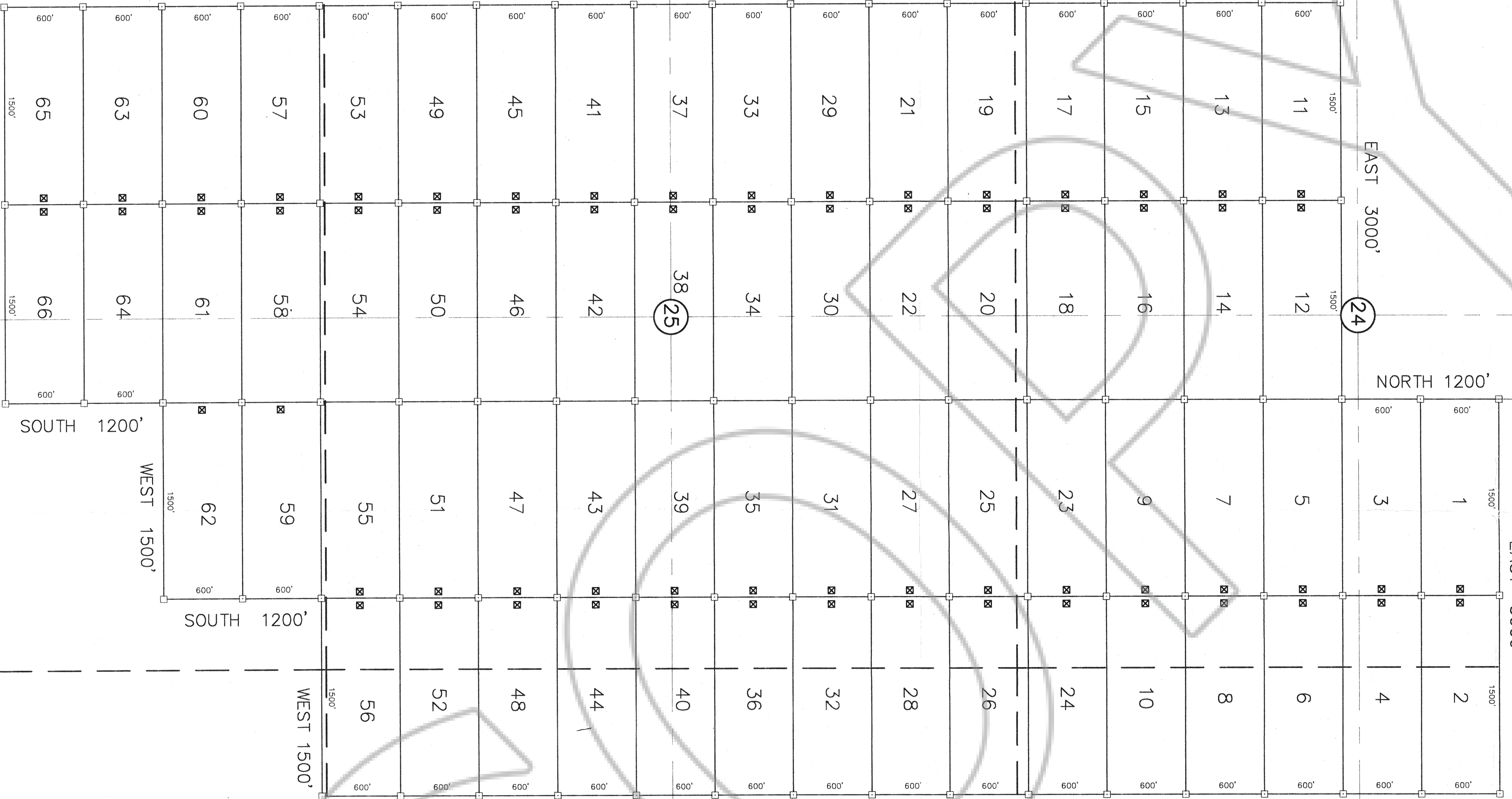
38 25

30

35

36

31



NOTES

ALL CLAIMS ARE 1500' X 600' UNLESS OTHERWISE SHOWN
LOCATION MONUMENTS ARE 20' FROM END LINE OF CLAIM
UNLESS OTHERWISE SHOWN.
SECTION LINES ARE PROJECTED.

LEGEND

☒ - 1 1/2" x 1 1/2" x 4' WOOD POST LOCATION MONUMENT
□ - 1 1/2" x 1 1/2" x 4' WOOD POST MONUMENT
◆ - TIE CORNER

LOCATION DATES:

OCT. 18, 1996 1 - 16
OCT. 22, 1996 17 - 24
OCT. 22, 1996 29, 30, 33, 34, 37, 38, 41, 42, 45, 46, 49, 50, 53, 54,
NOV. 25, 1996 57, 58, 60, 61, 63, 64, 65 AND 66
NOV. 26, 1996 25, 26, 27, 28, 31, 32, 35, 36, 39, 40, 43, 44, 47, 48,
51, 52, 55, 56, 59, AND 62