

DRAWING I

SARCO PRODUCTS
REPRODUCED BY PART

DRAWING NUMBER
#121

Moose Survey
SARCO PRODUCTS • NEW HOPE, MINNESOTA
REPRODUCED BY PART NUMBER 8551

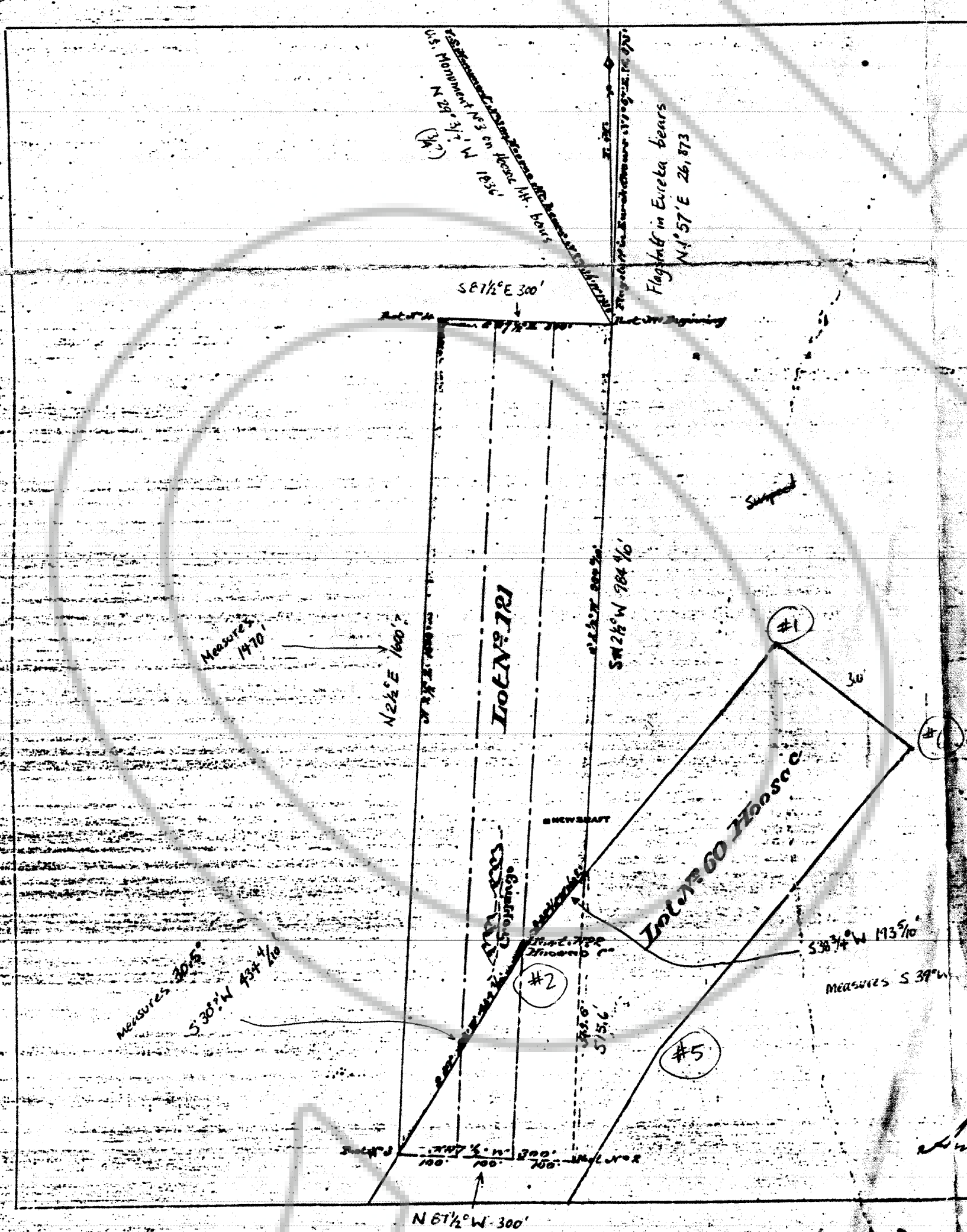
DRAWING NUMBER
165479

SARCO PRODUCTS • NEW HOPE, MINNESOTA
REPRODUCED BY PART NUMBER 8551

DRAWING NUMBER

SARCO PRODUCTS • NEW HOPE, MINNESOTA
REPRODUCED BY PART NUMBER 8551

165479



Survey No. 781

PLAT

HOOSAO CONSOL. CTS. M. CO.

Claim on the

Dolly Varden Lode

Esmeralda County, Nev.

Surveyed by

T. J. Board U. S. Deputy Surveyor,

1877

Containing 8 2/3 Acres.

Scale 200 feet to inch.

Variation 15 3/4° East.

The original field notes of the survey of the Esmeralda Lode Mining Claim from which this Plat has been made, have been examined and approved, and are on file in this office. And I hereby certify that they furnish such an accurate description of said Esmeralda Lode Mining Claim, as will, if incorporated into a patent, serve fully to identify the premises, and that such reference is made therein to natural objects and permanent monuments, as will perpetuate and fix the locus thereof. I further certify that the value of the labor and improvements upon the said Mining Claim, placed thereon by the applicant and his grantors, is not less than five hundred dollars, and that said improvements consist of as per plat.

And I further certify that this is a correct Plat of said Esmeralda Lode Mining Claim or premises, made in conformity with said original Field Notes of Survey thereof.

U. S. Surveyor-General's Office, Virginia City, Nevada.

June 22 1877

Witnessed June 1st 1880

H. S. Plummer
U. S. Surveyor-General for Nevada.

20 374

FILED AT THE REQUEST OF United States (S.M.)
on 19 26 at 42 mins. past 10 A.M.
RECORDS OF ESMERALDA COUNTY, NEVADA M. N. REBELETTI, Recorder
File No. 165479 Fee \$ 10.00