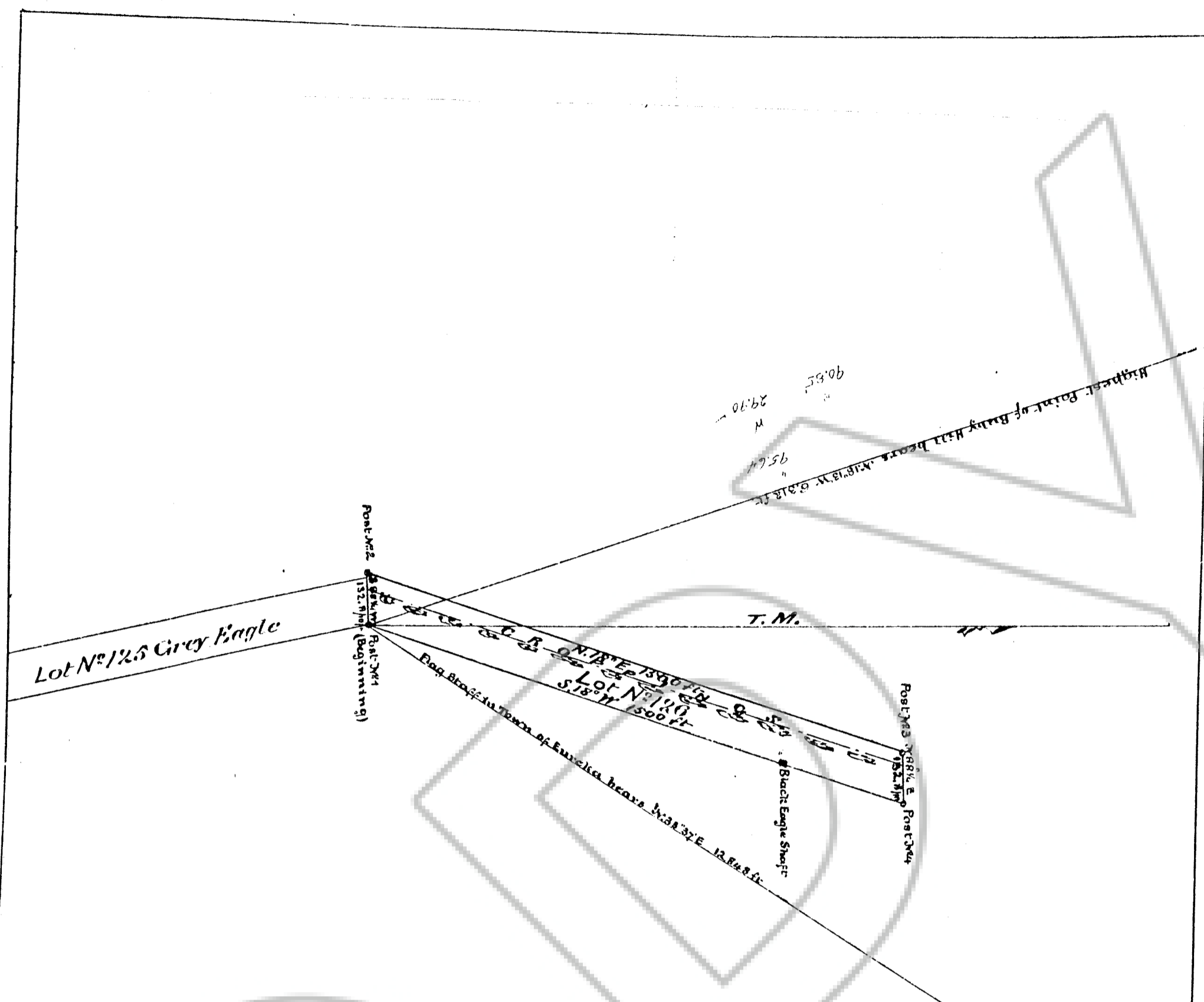


DRAWING NUMBER
165482

DRAWING NUMBER
126
Mineral Survey



20 379

Survey No. 126

PLAT

SAMUEL COOPER ET AL

Claim on the

Black Eagle Lode

Executed Mining District, Garfield County, Nev.
Surveyed by

I. T. Reed U. S. Deputy Surveyor,

Dated July 1877

Containing 7.33 Acres.

Scale 300 feet to inch.

Variation N. 50.2 East

The original field notes of the Samuel Cooper et al. Mining Claim from which this Plat has been made, have been examined and approved, and are on file in this office. And I hereby certify that they furnish such an accurate description of said Samuel Cooper et al. Mining Claim, as will, if incorporated into a patent, serve fully to identify the premises, and that such reference is made therein to natural objects and permanent monuments, as will perpetuate and fix the locus thereof. I further certify that the value of the labor and improvements upon the said Mining Claim, placed thereon by the applicants and promoters, is not less than five hundred dollars, and that said improvements consist of 2. Cattle, one of A. S. S. S. S.

And I further certify that this is a correct Plat of said Samuel Cooper et al. Mining Claim or premises, made in conformity with said original Field Notes of Survey thereof.

U. S. Surveyor-General's Office, Virginia City, Nevada.
August 13th 1877

I. T. Reed
U. S. Surveyor-General for Nevada.

FILED AT THE REQUEST OF Samuel Cooper et al.
on 12/11 1926 at 4:30 P.M.
RECORDS OF GARFIELD COUNTY, NEVADA M. N. REBELEAU, Recorder
File No. 165482
Fee \$ No fee

165482

2588