

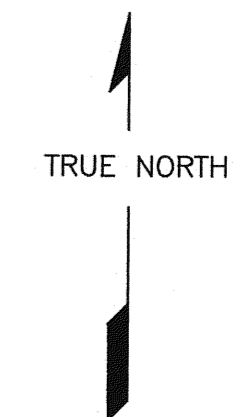
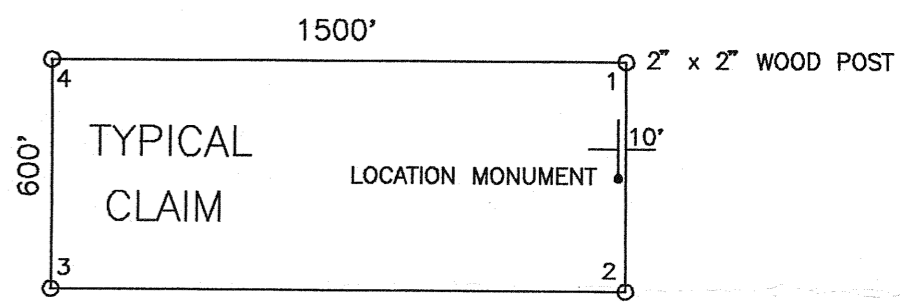
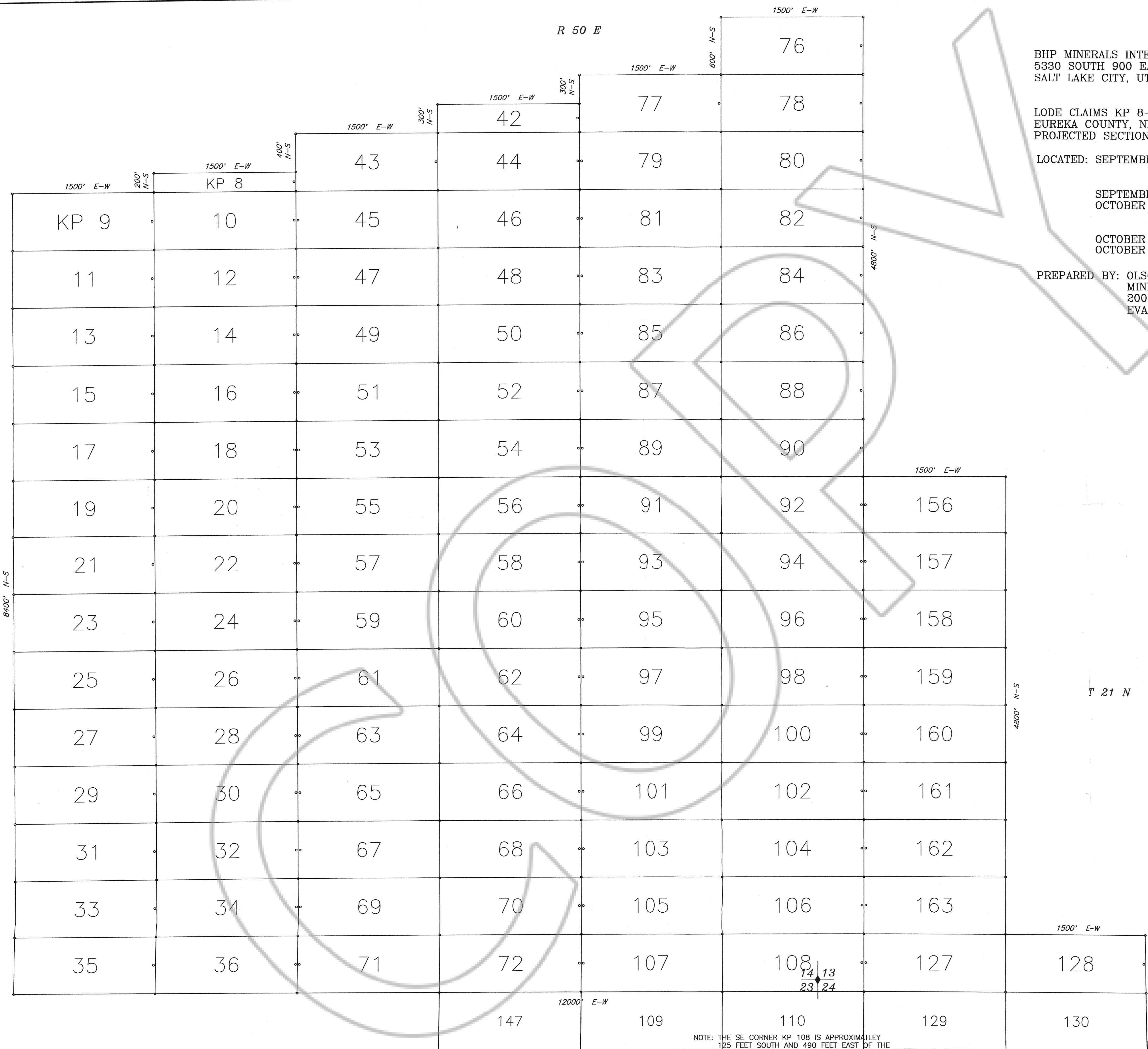
BHP MINERALS INTERNATIONAL EXPLORATION INC.  
5330 SOUTH 900 EAST, SUITE 200  
SALT LAKE CITY, UTAH 84117

LODE CLAIMS KP 8-36,42-72,76-108,127,128,156-163  
EUREKA COUNTY, NEVADA  
PROJECTED SECTIONS: 10,11,12,13,14,15,22,23,24 T 21 N, R 50 E M.D.B.M.

LOCATED: SEPTEMBER 17, 1996 KP 10,12,14,16,18,20,22,24,26,28,30,32,  
KP 34,36,44-72,79,81,83,85,87,89,91,  
SEPTEMBER 18, 1996 KP 108,127  
OCTOBER 12, 1996 KP 19,21,23,25,27,29,31,33,35,78,80,82,  
KP 84,86,88,90,92,94,96,98,100,102,104,  
OCTOBER 16, 1996 KP 106,128,156-163  
OCTOBER 17, 1996 KP 8,9,11,13,15,17,42,43,77

PREPARED BY: OLSON LAND SURVEYING &  
MINERAL EXPLORATION, INC.  
200 RAPID CANYON ROAD  
EVANSTON, WYOMING 82930

SHEET 1 OF 2



0 500'  
SCALE 1"=500'

T 21 N

NOTE: THE SE CORNER KP 108 IS APPROXIMATELY  
125 FEET SOUTH AND 490 FEET EAST OF THE  
SW CORNER SECTION 13 T 21 N, R 50 E.

FILED AT THE REQUEST OF *BHP Minerals Int'l Expl*  
ON 12/18 19 96 at 44 mins, past 2:00 P.M.  
RECORDS OF EUREKA COUNTY, NEVADA M. N. REED, Jr., Recorder  
Fee No. 1620.00  
165647